

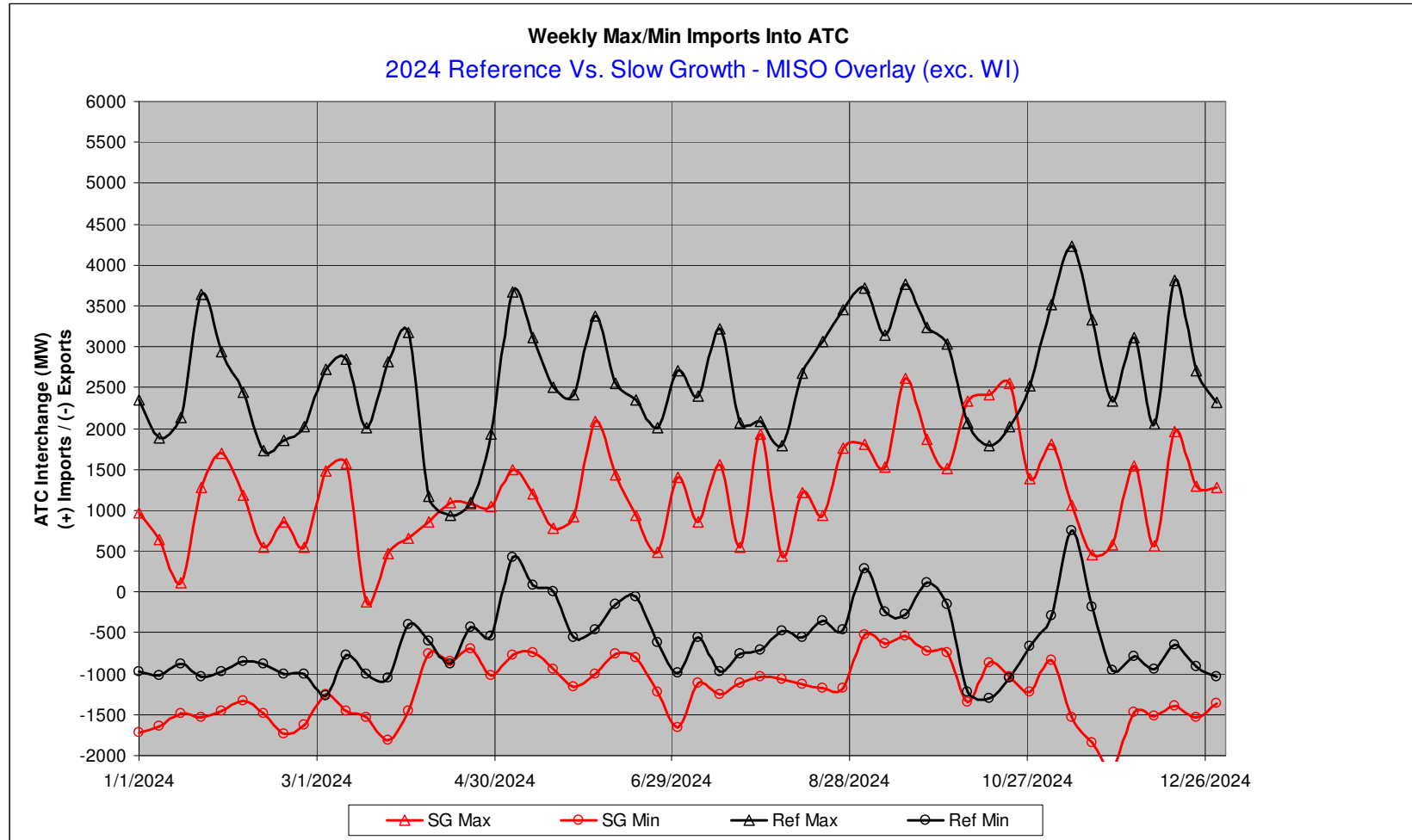


ATC Order 890 Stakeholder Update Preliminary Results Base Case Imports and Through-flows

ATC Economic Planning
Presented: 12/18/08 by Tom Dagenais

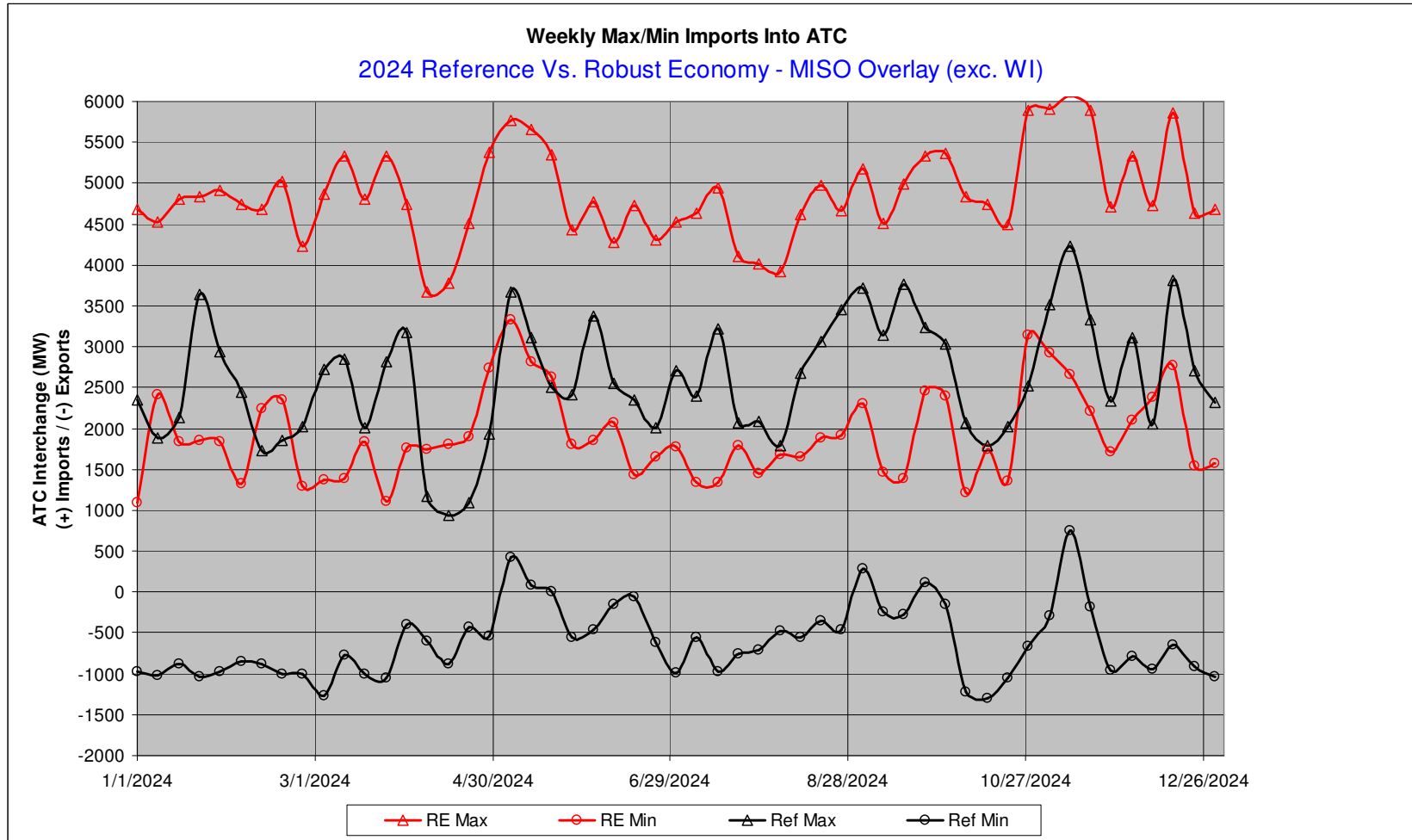


2024 Imports Reference vs. Slow Growth



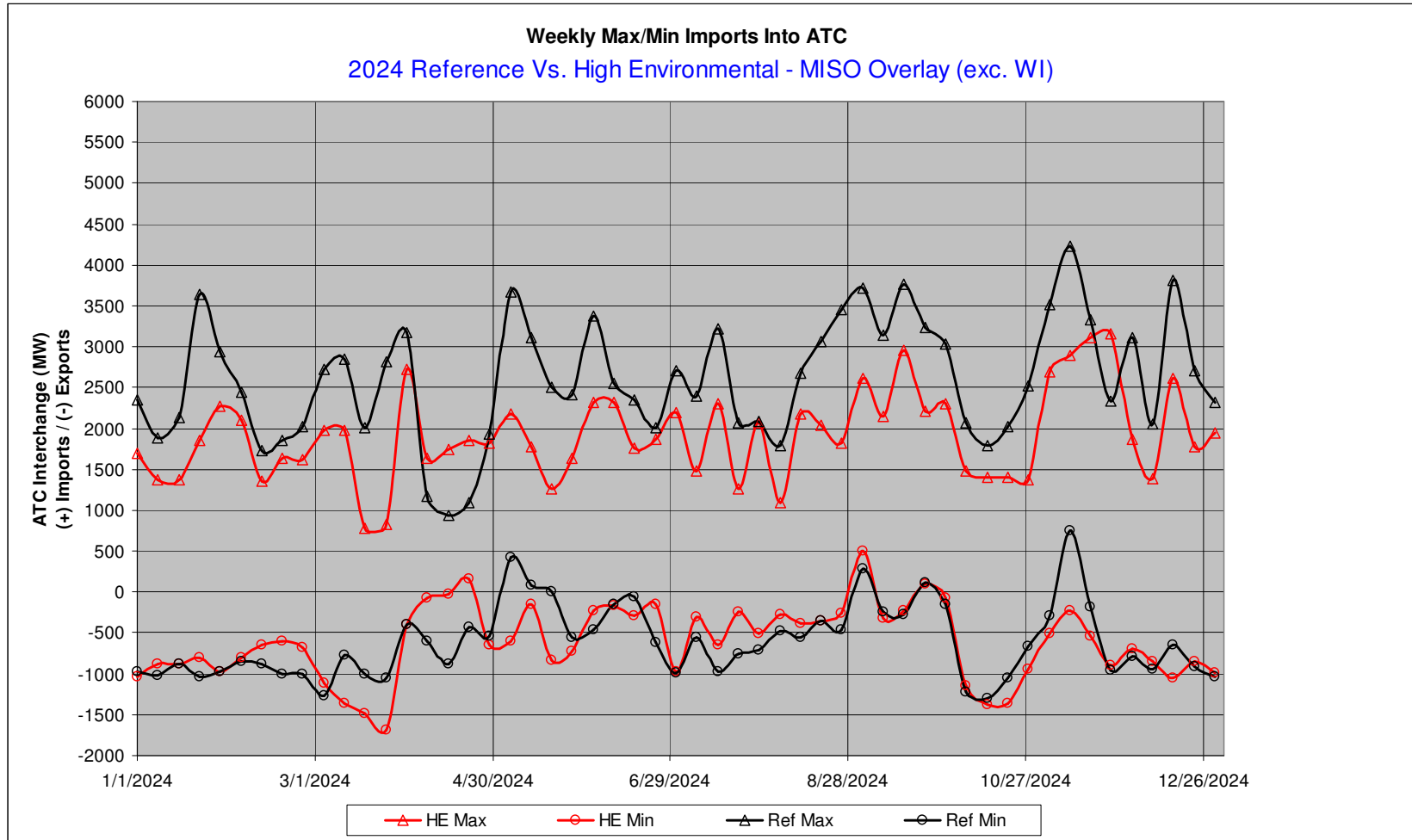


2024 Imports Reference vs. Robust Economy



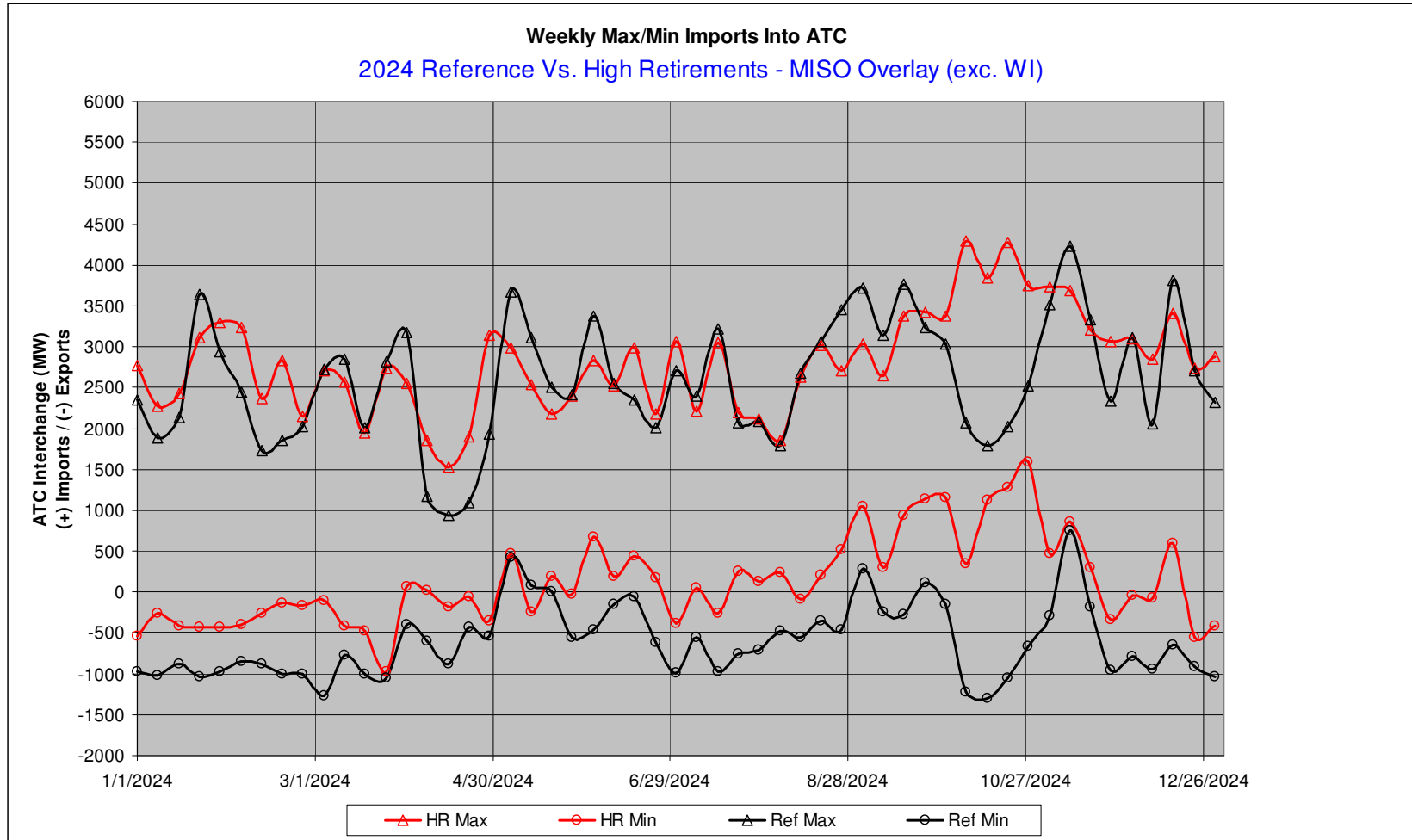


2024 Imports Reference vs. High Environmental



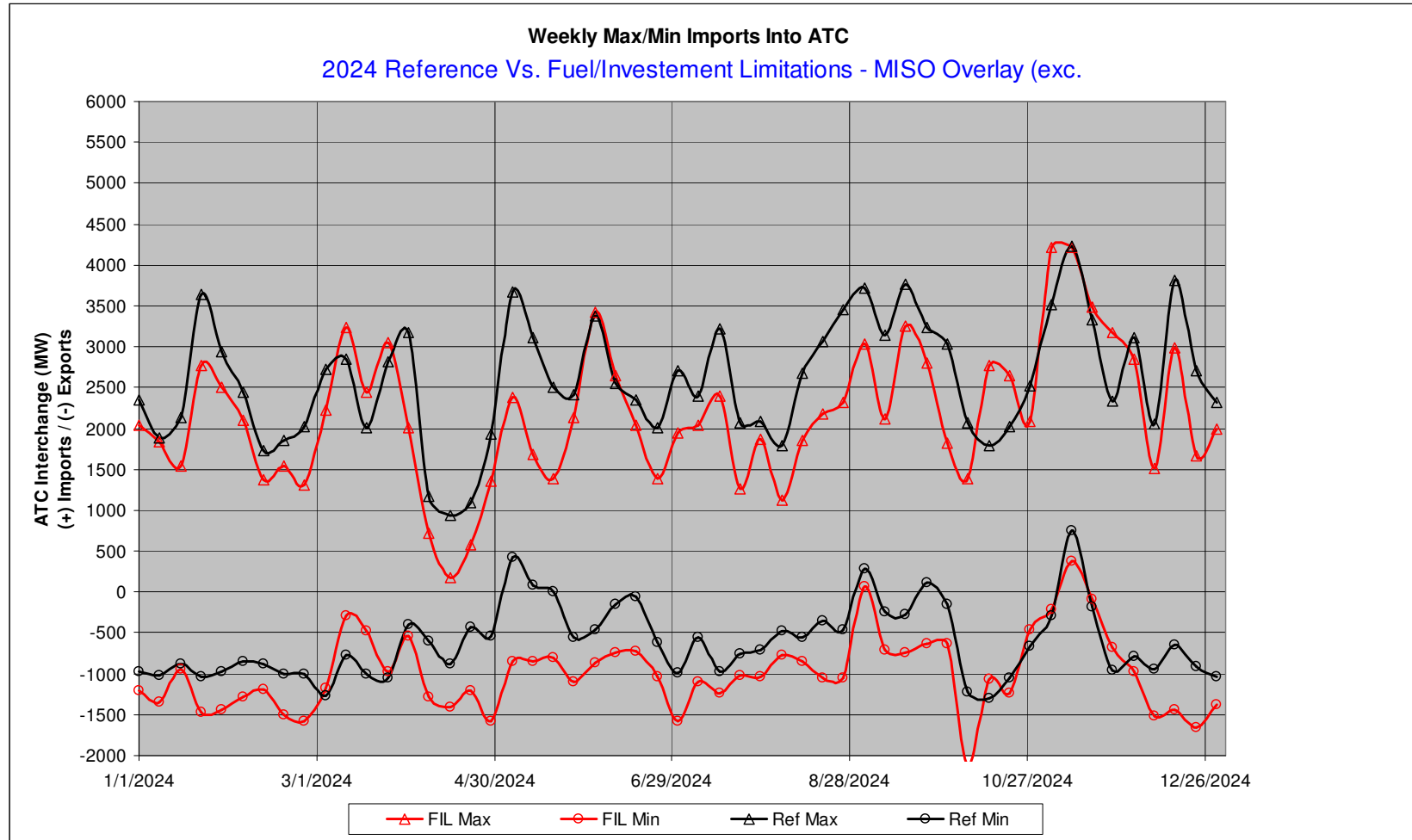


2024 Imports Reference vs. High Retirements



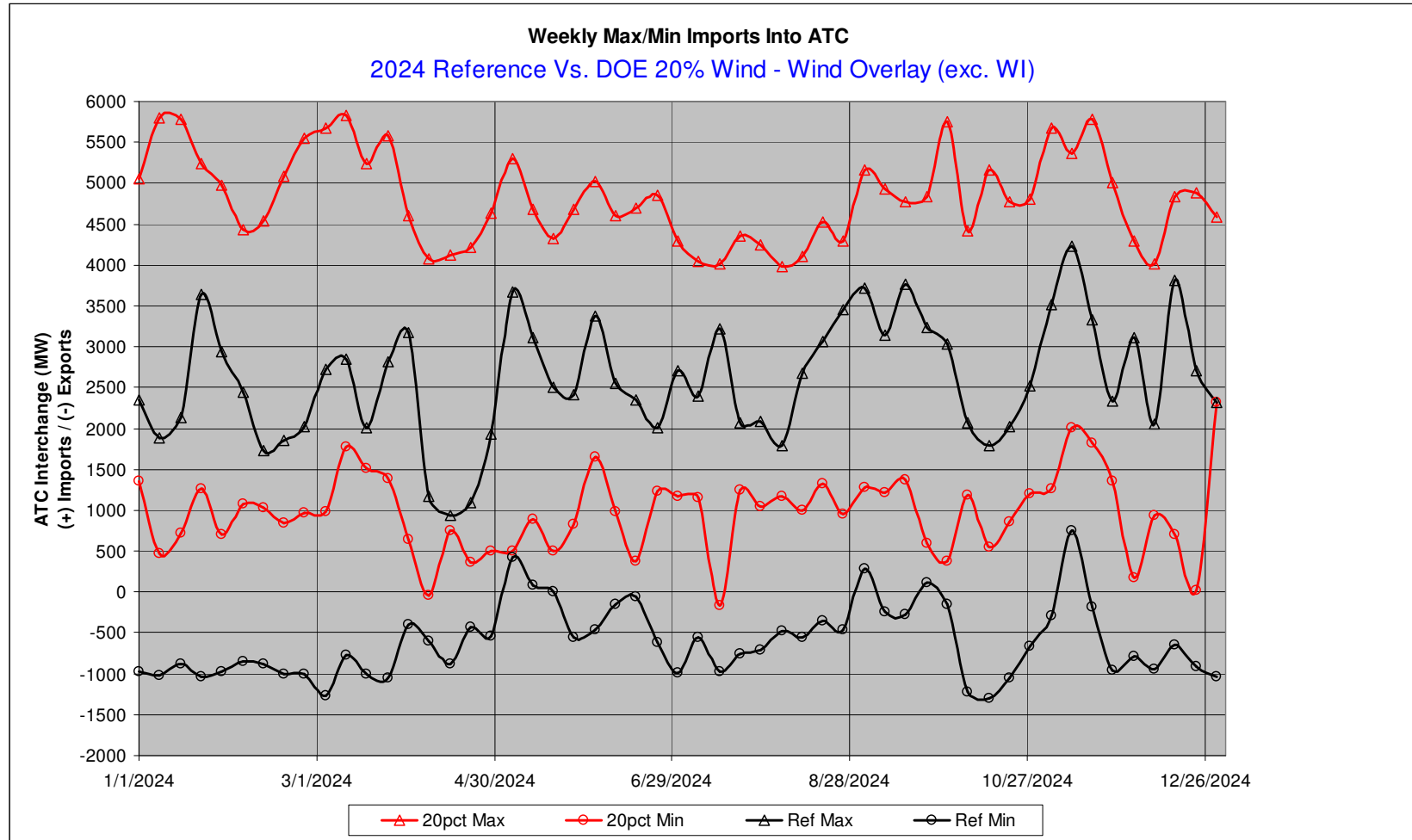


2024 Imports Reference vs. Fuel/Investment Limits



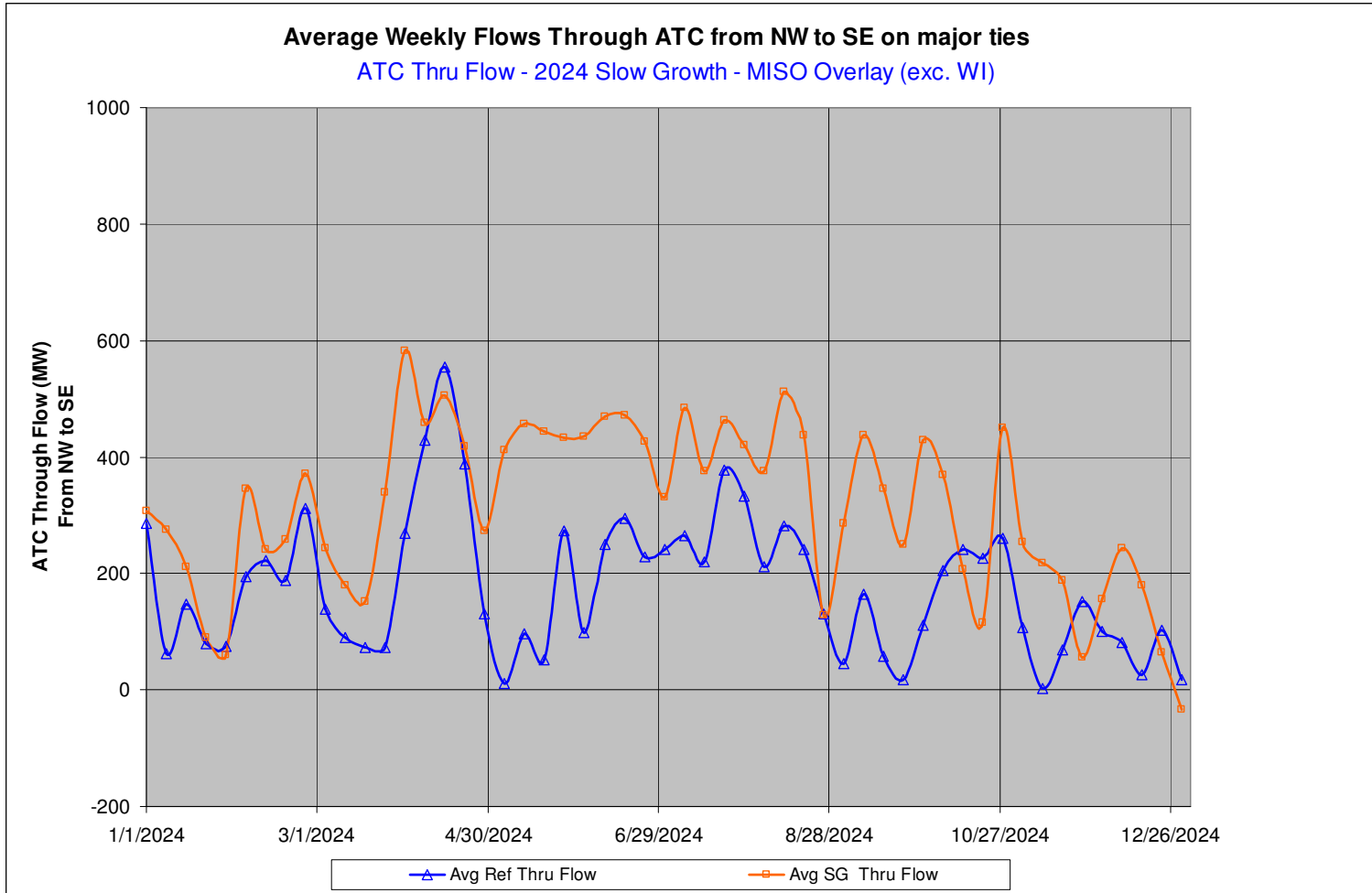


2024 Imports Reference vs. DOE 20% Wind



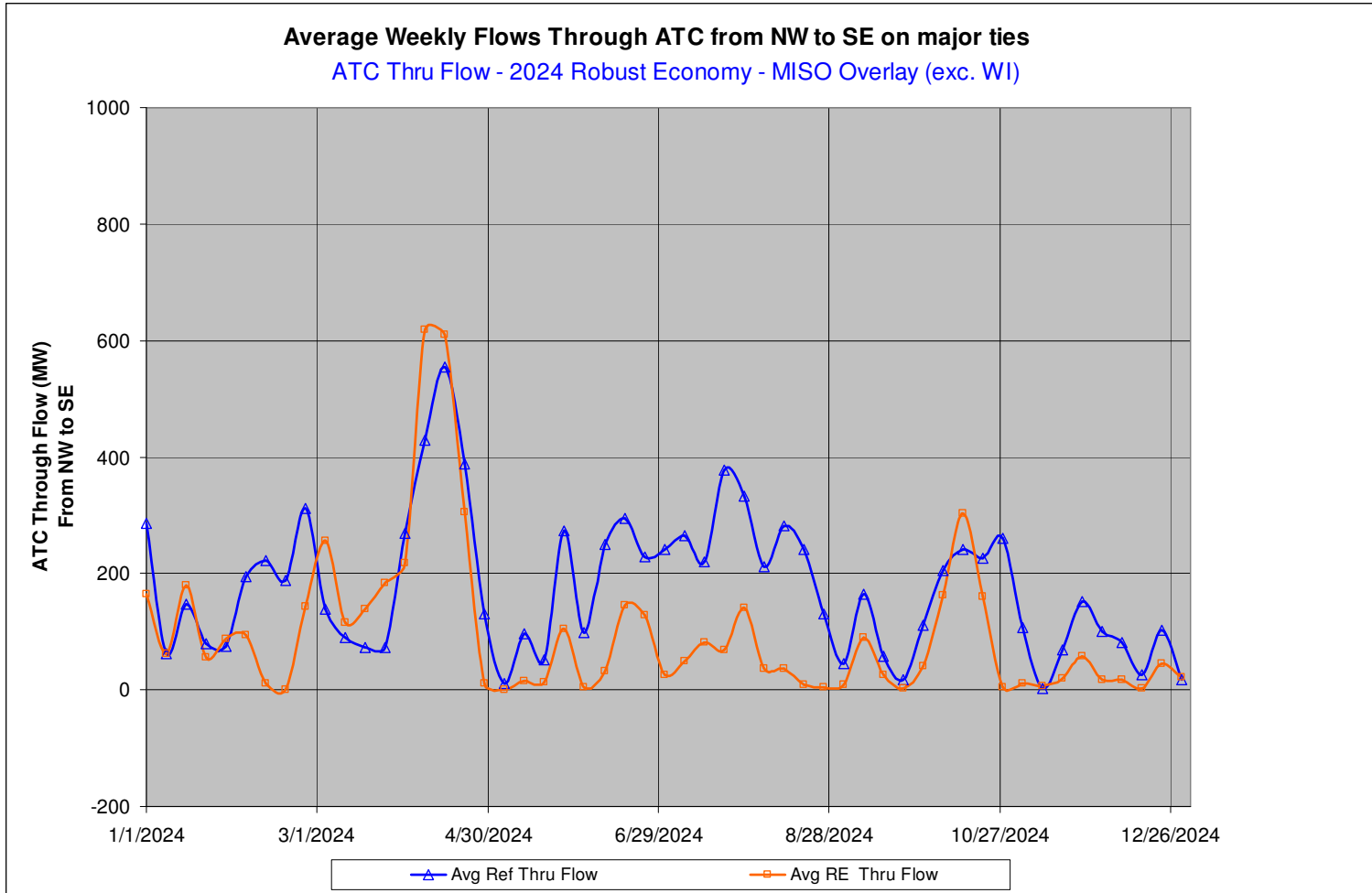


2024 Through Flow Reference vs. Slow Growth



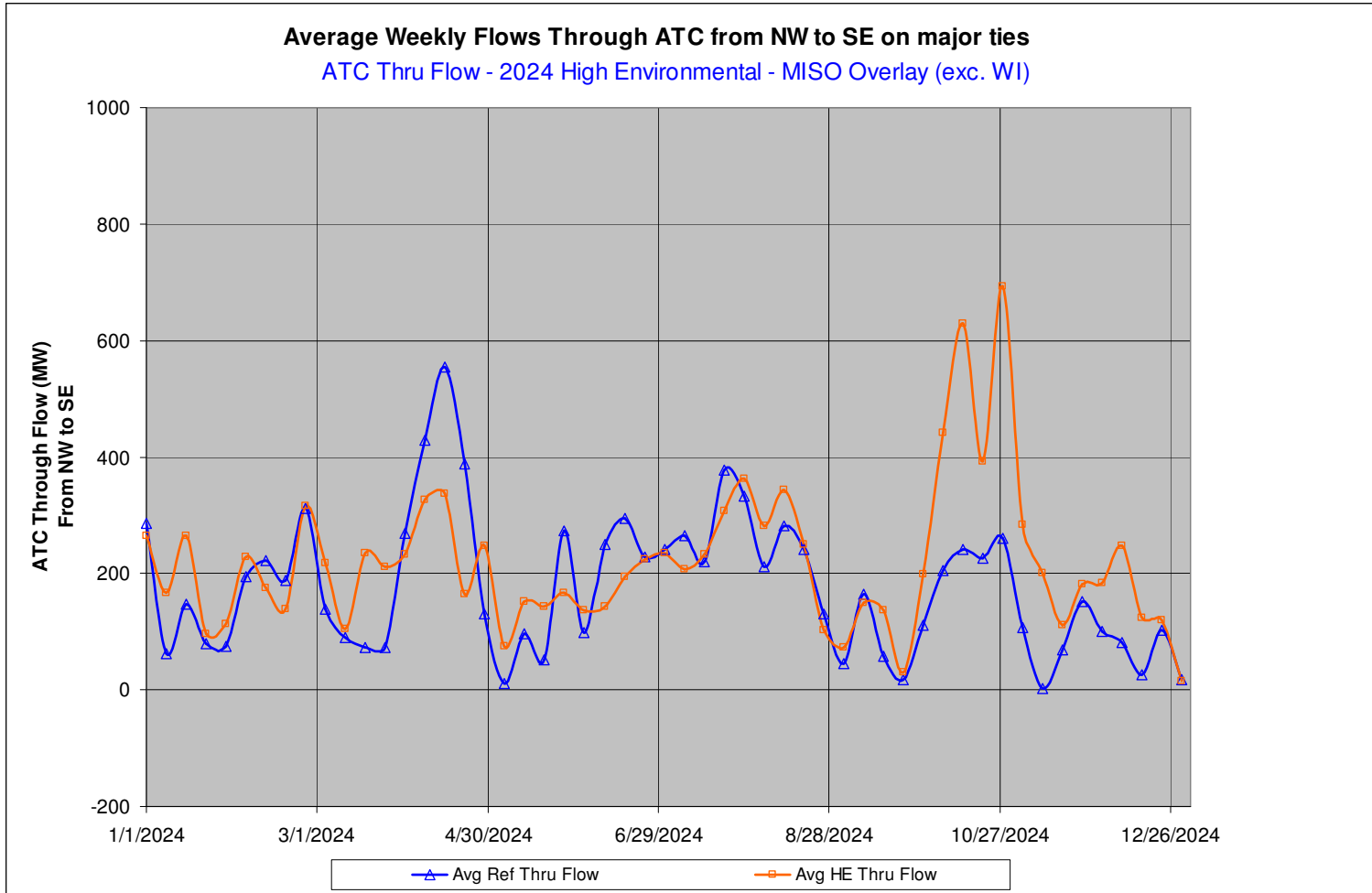


2024 Through Flow Reference vs. Robust Economy



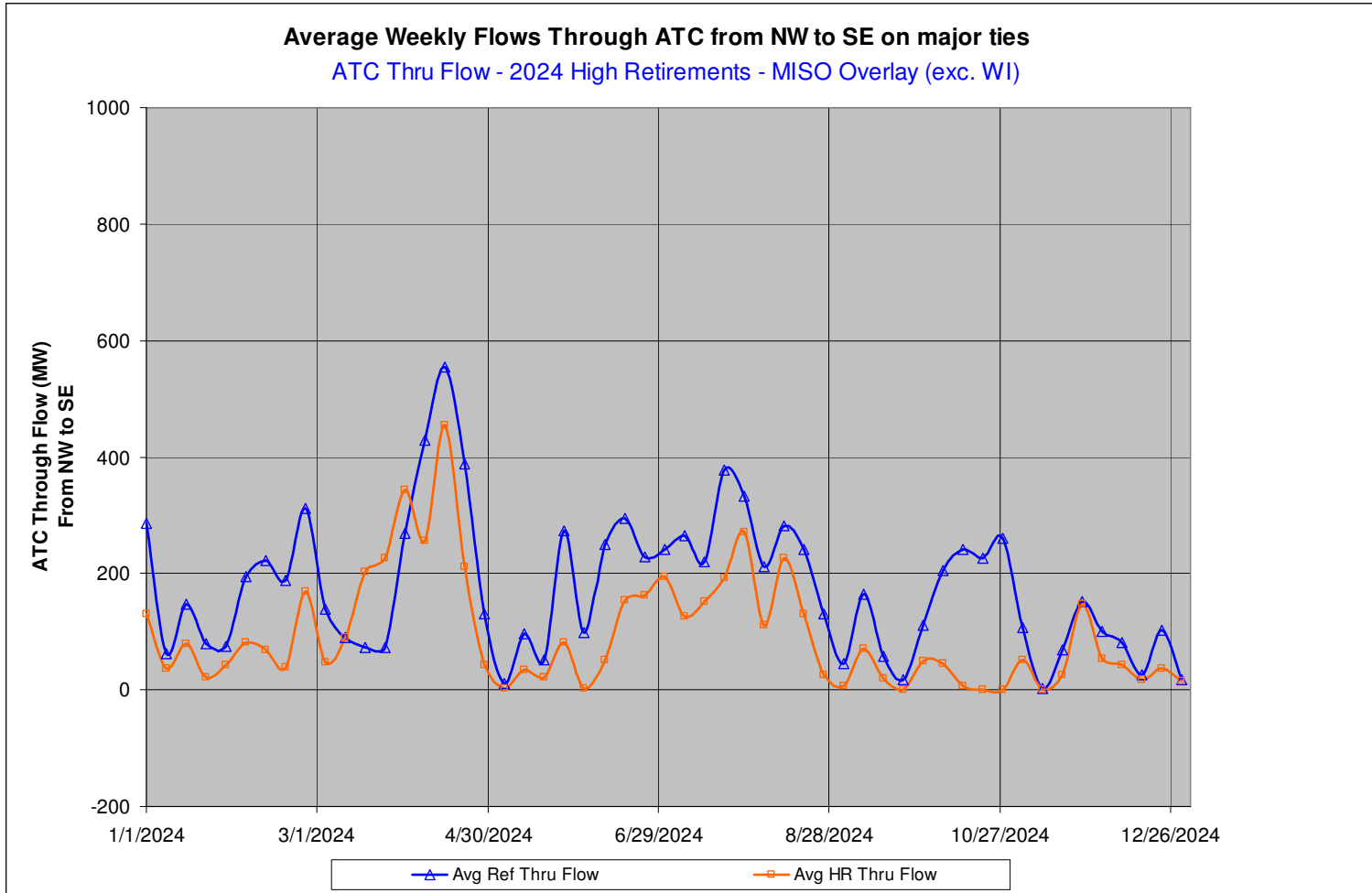


2024 Through Flow Reference vs. High Environmental



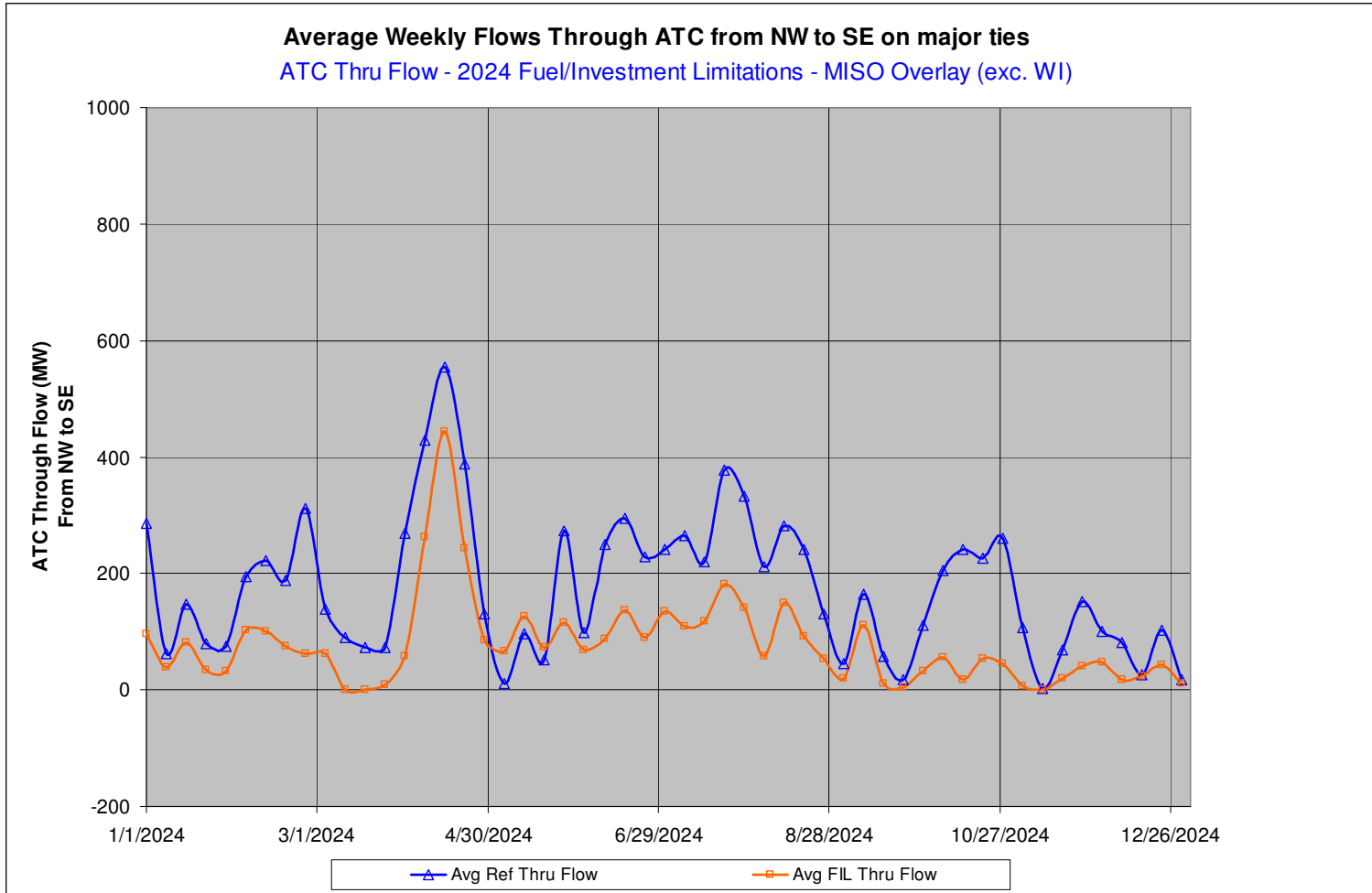


2024 Through Flow Reference vs. High Retirements



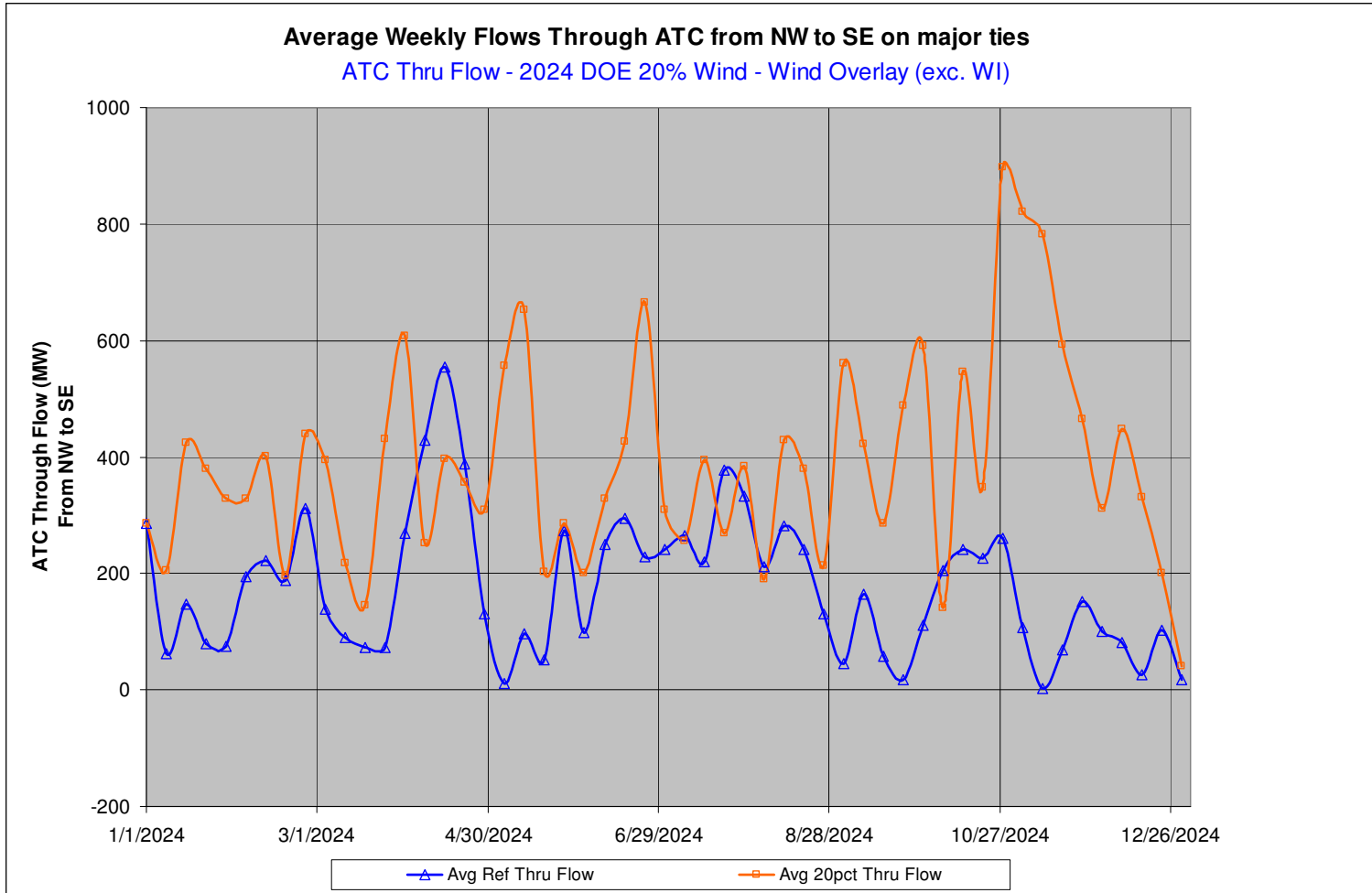


2024 Through Flow Reference vs. Fuel/Investment Limits



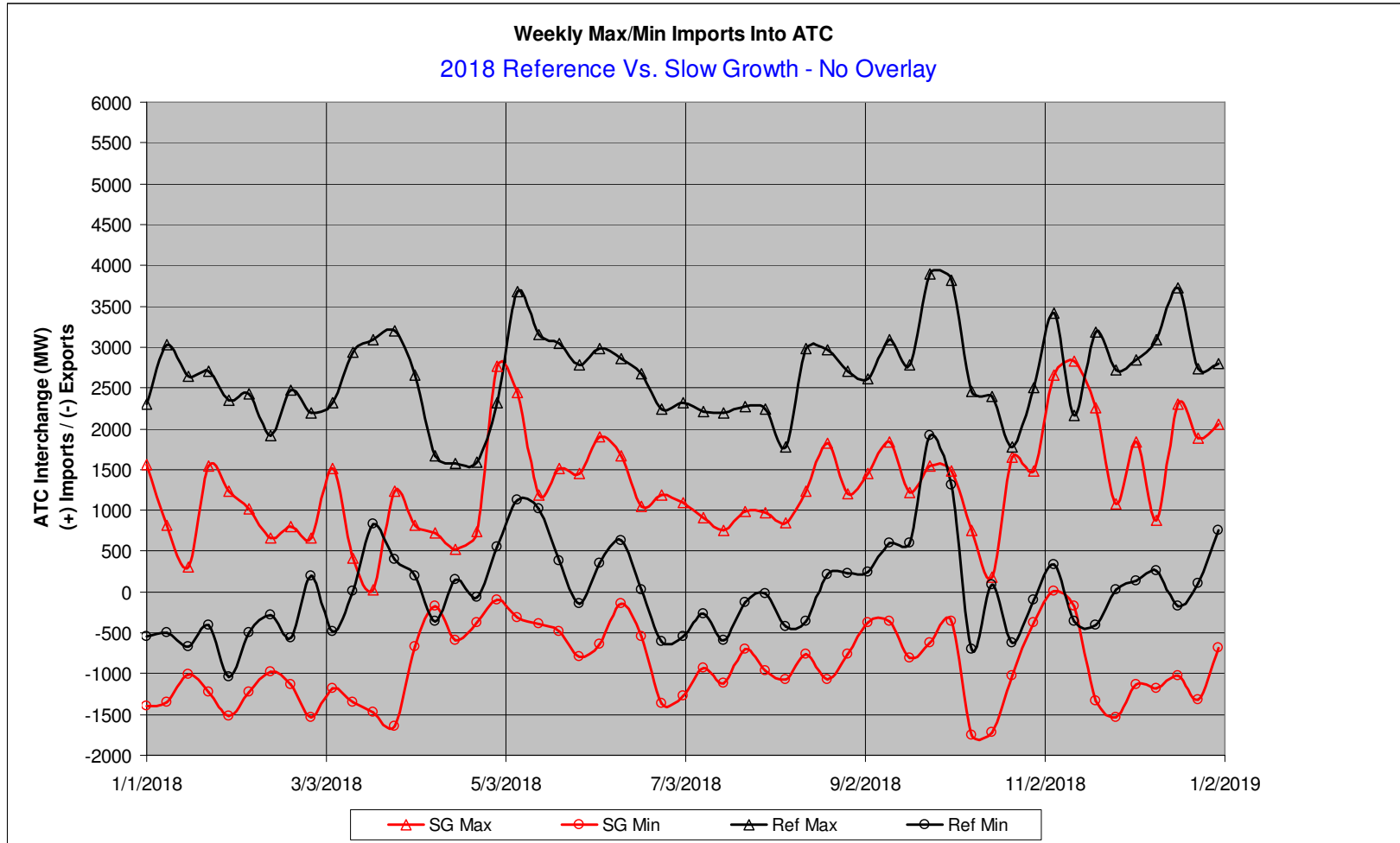


2024 Through Flow Reference vs. DOE 20% Wind



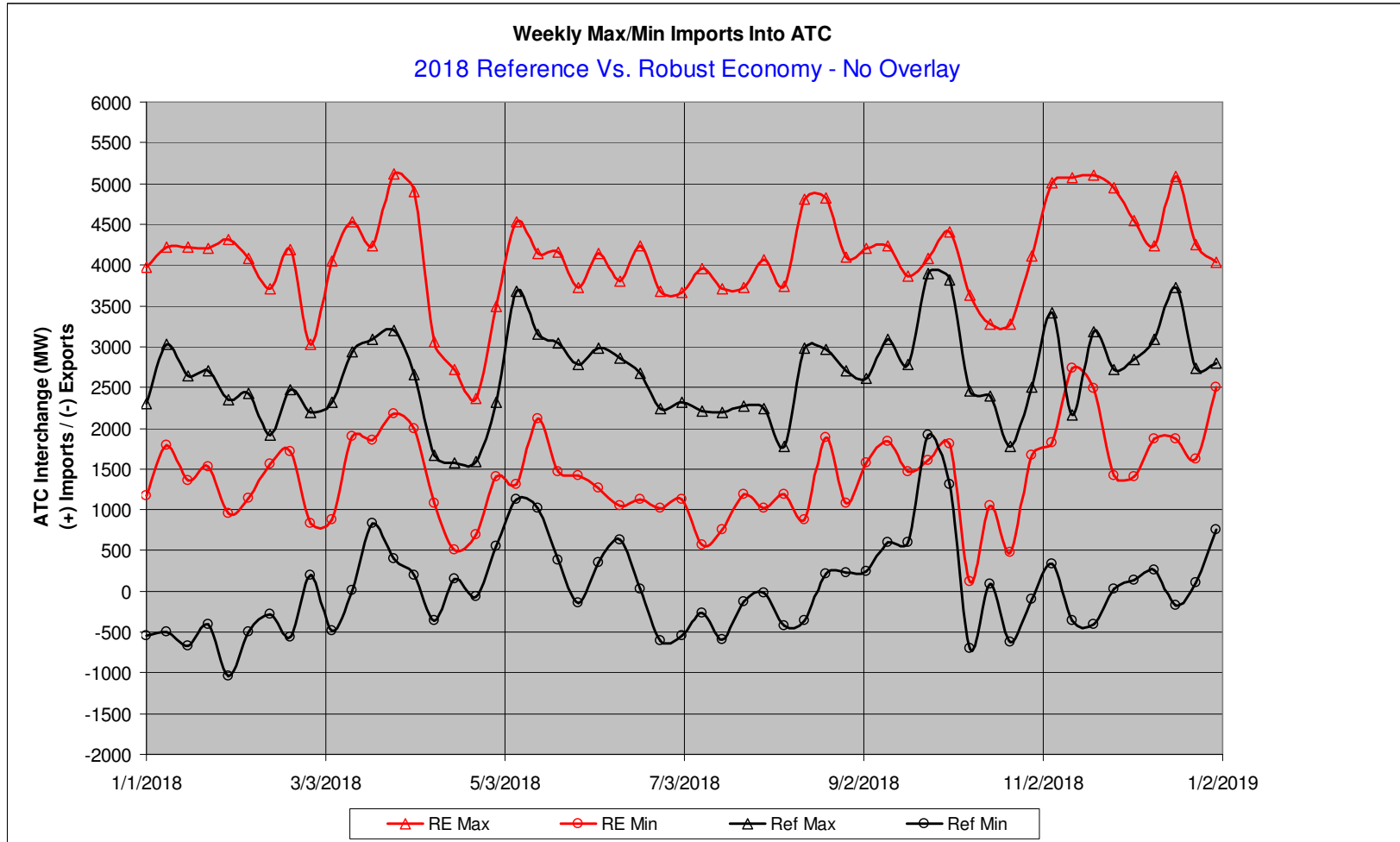


2018 Imports Reference vs. Slow Growth



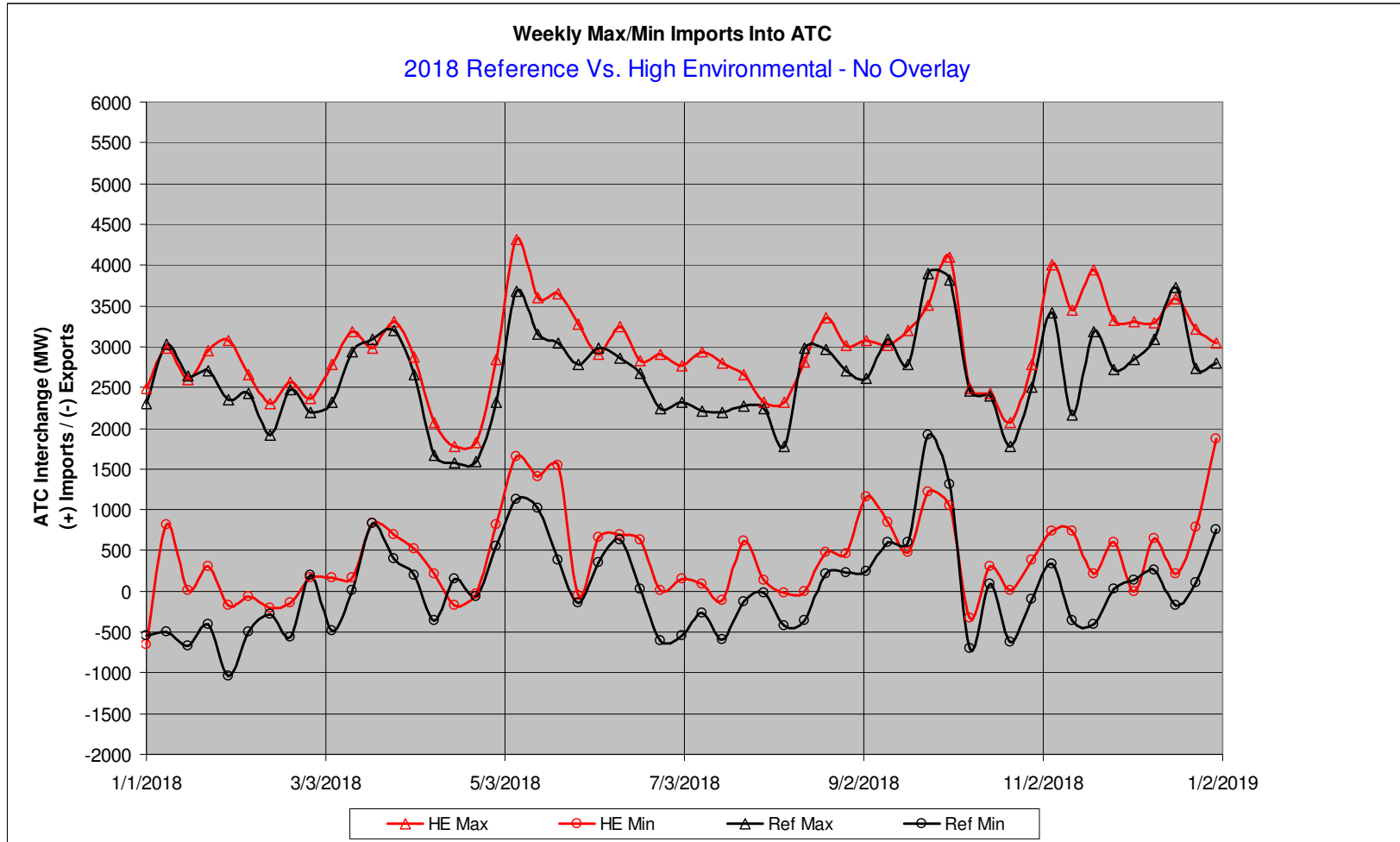


2018 Imports Reference vs. Robust Economy



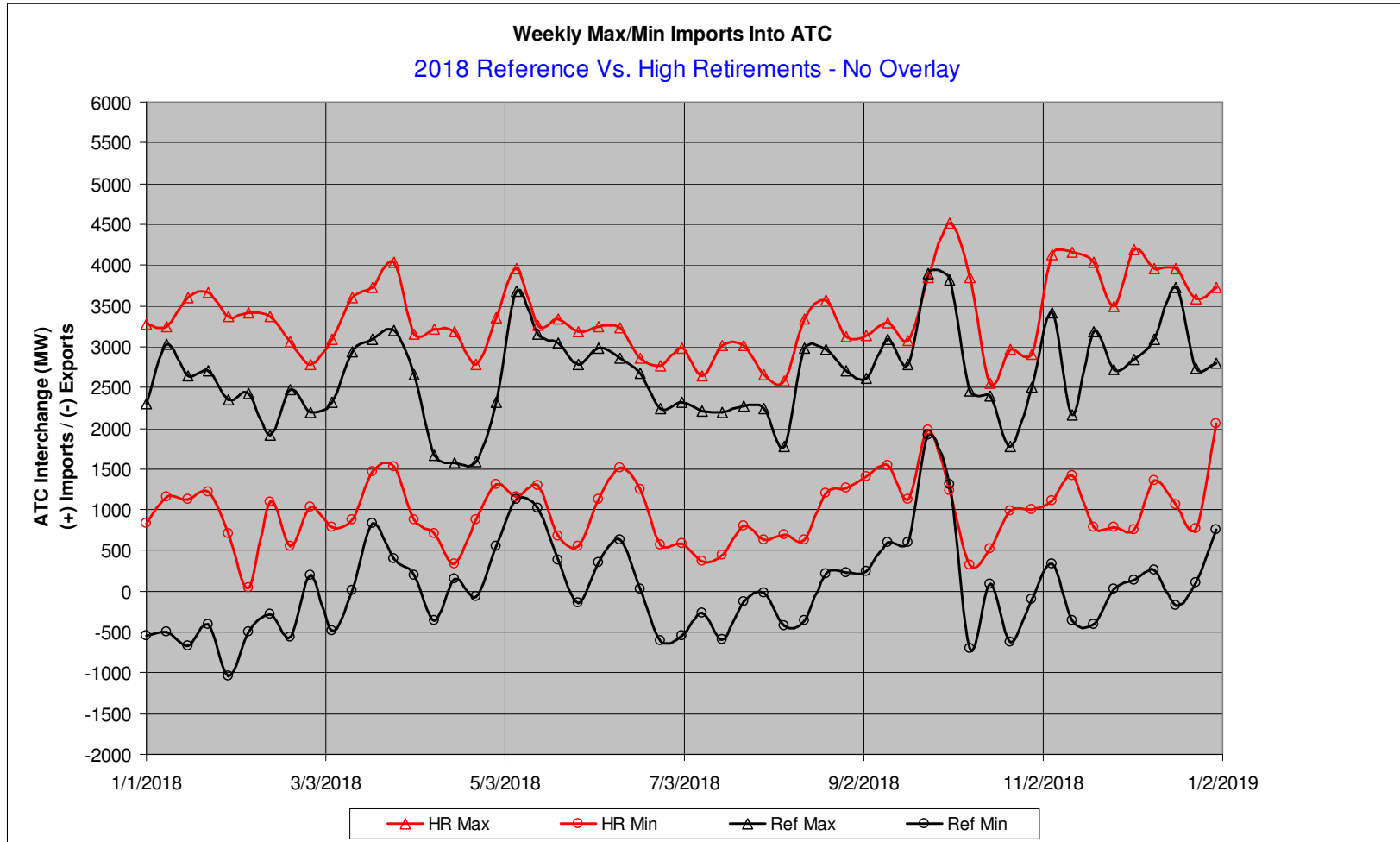


2018 Imports Reference vs. High Environmental



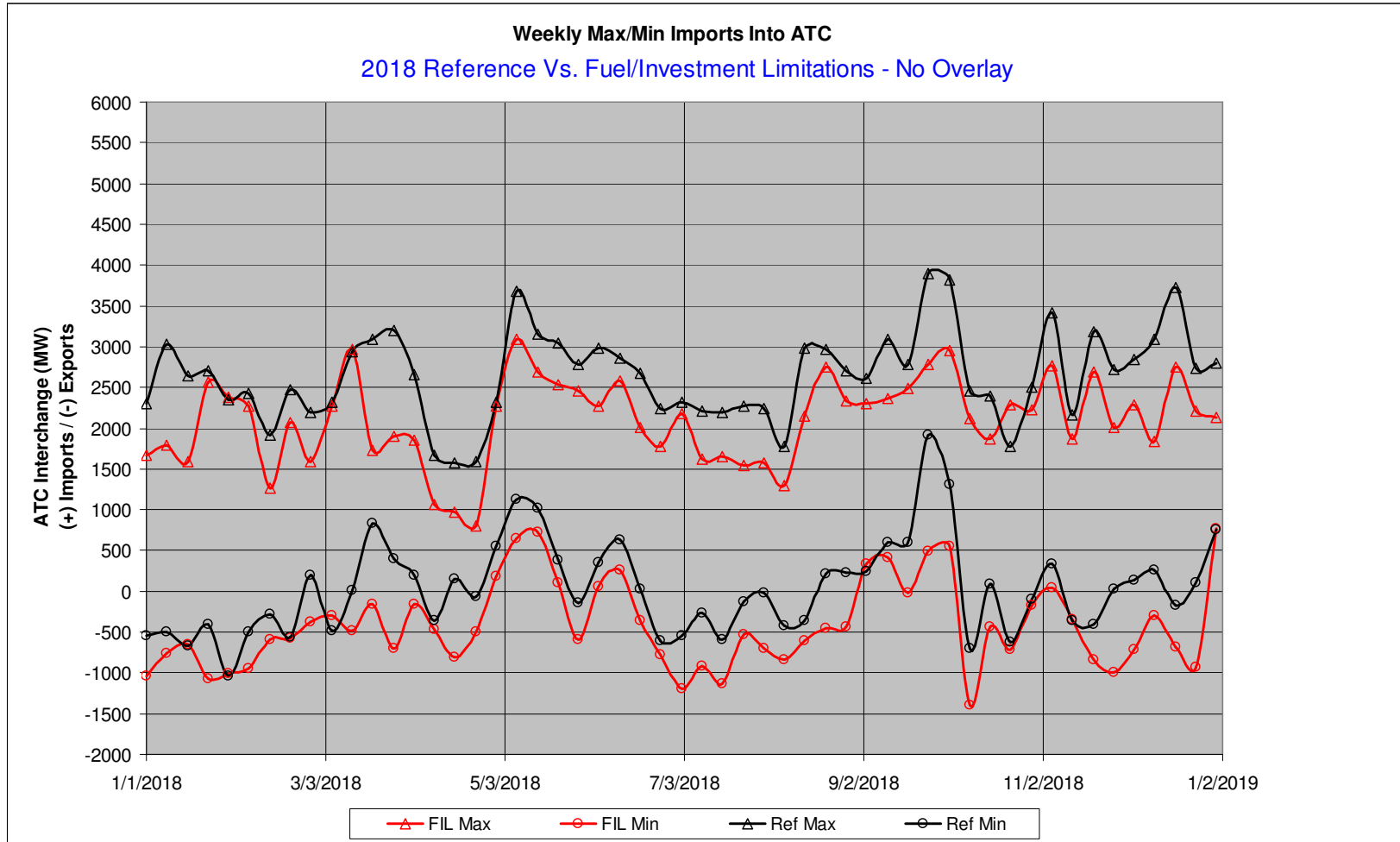


2018 Imports Reference vs. High Retirements



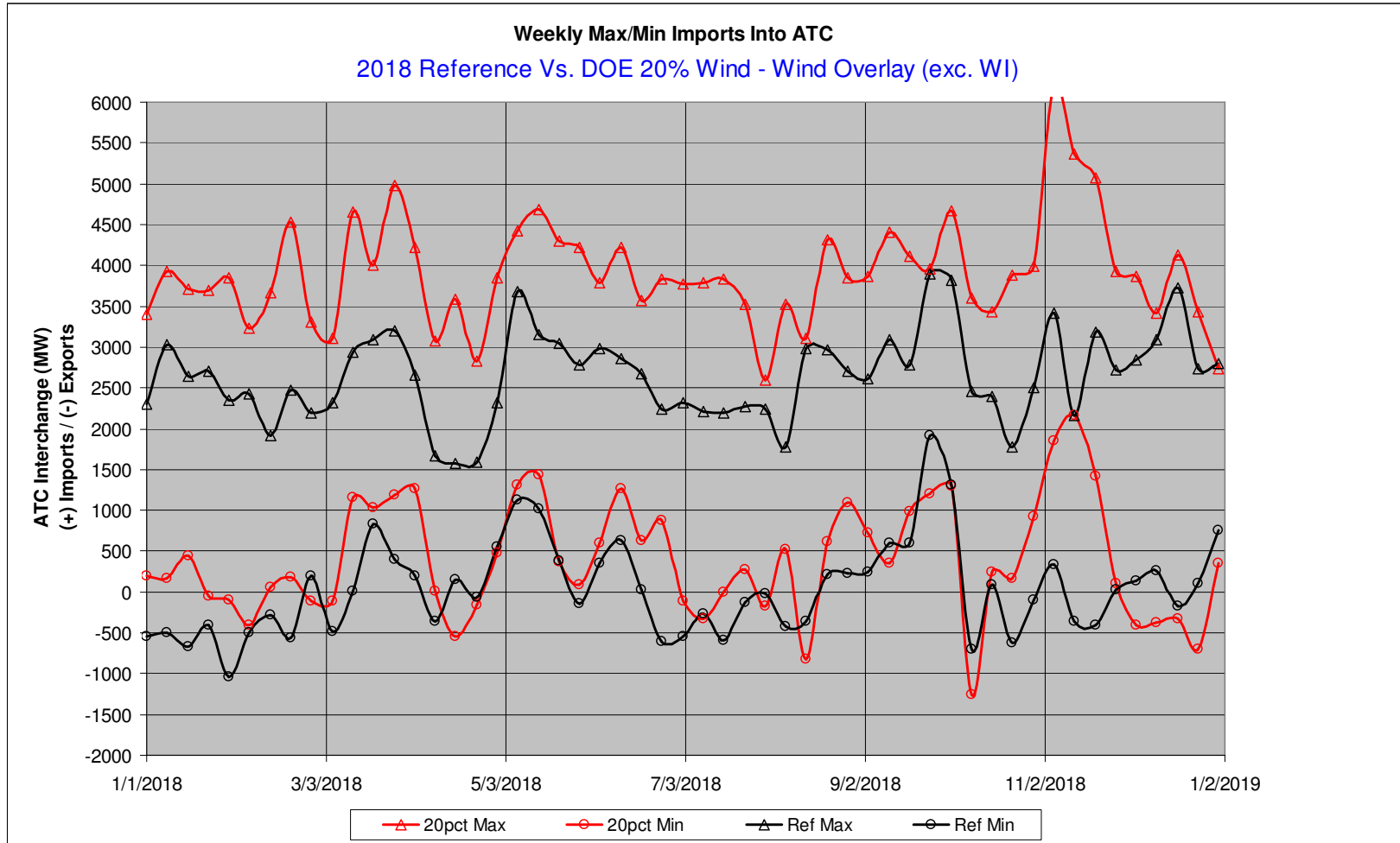


2018 Imports Reference vs. Fuel/Investment Limits



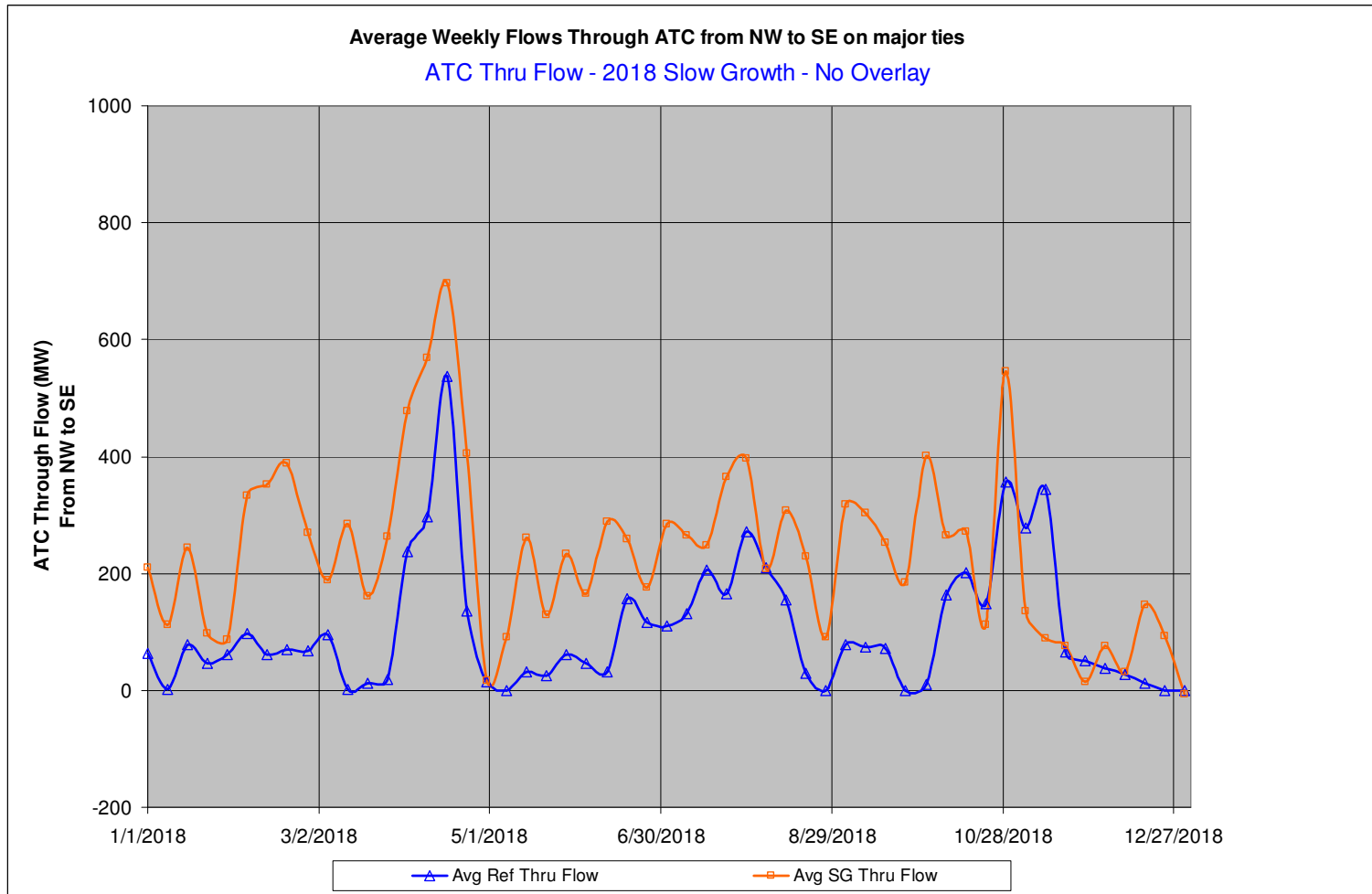


2018 Imports Reference vs. DOE 20% Wind



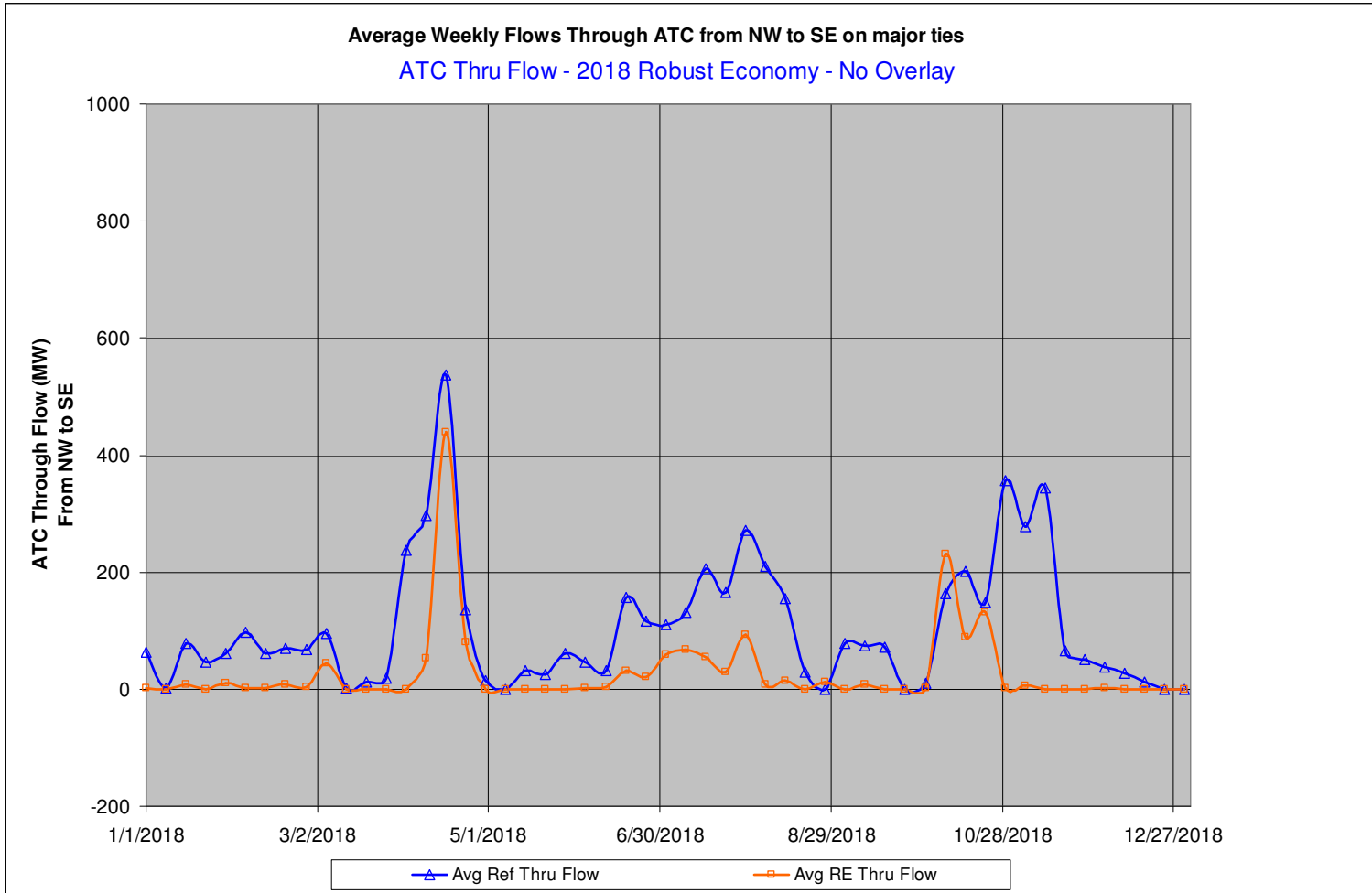


2018 Through Flow Reference vs. Slow Growth



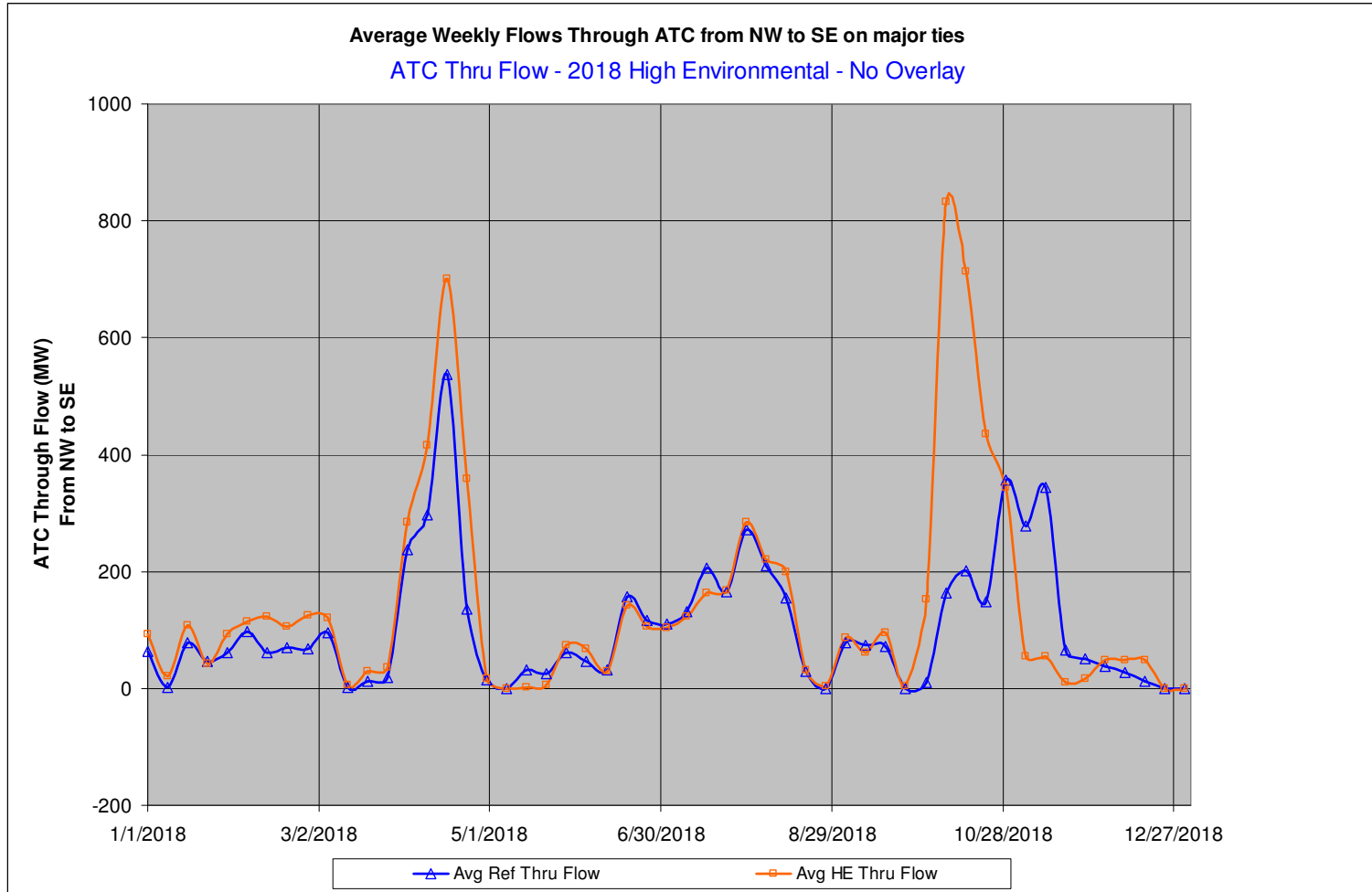


2018 Through Flow Reference vs. Robust Economy



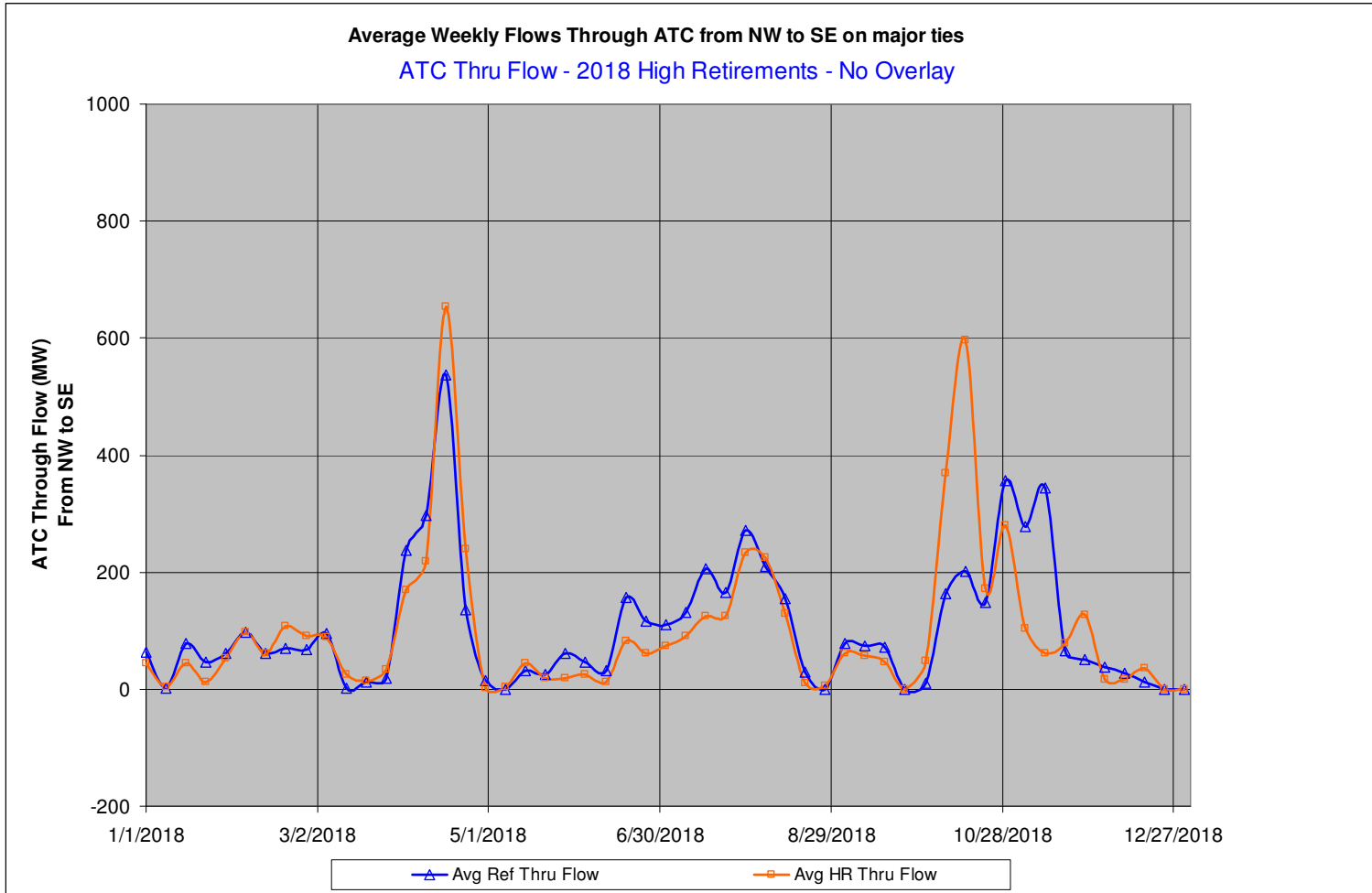


2018 Through Flow Reference vs. High Environmental



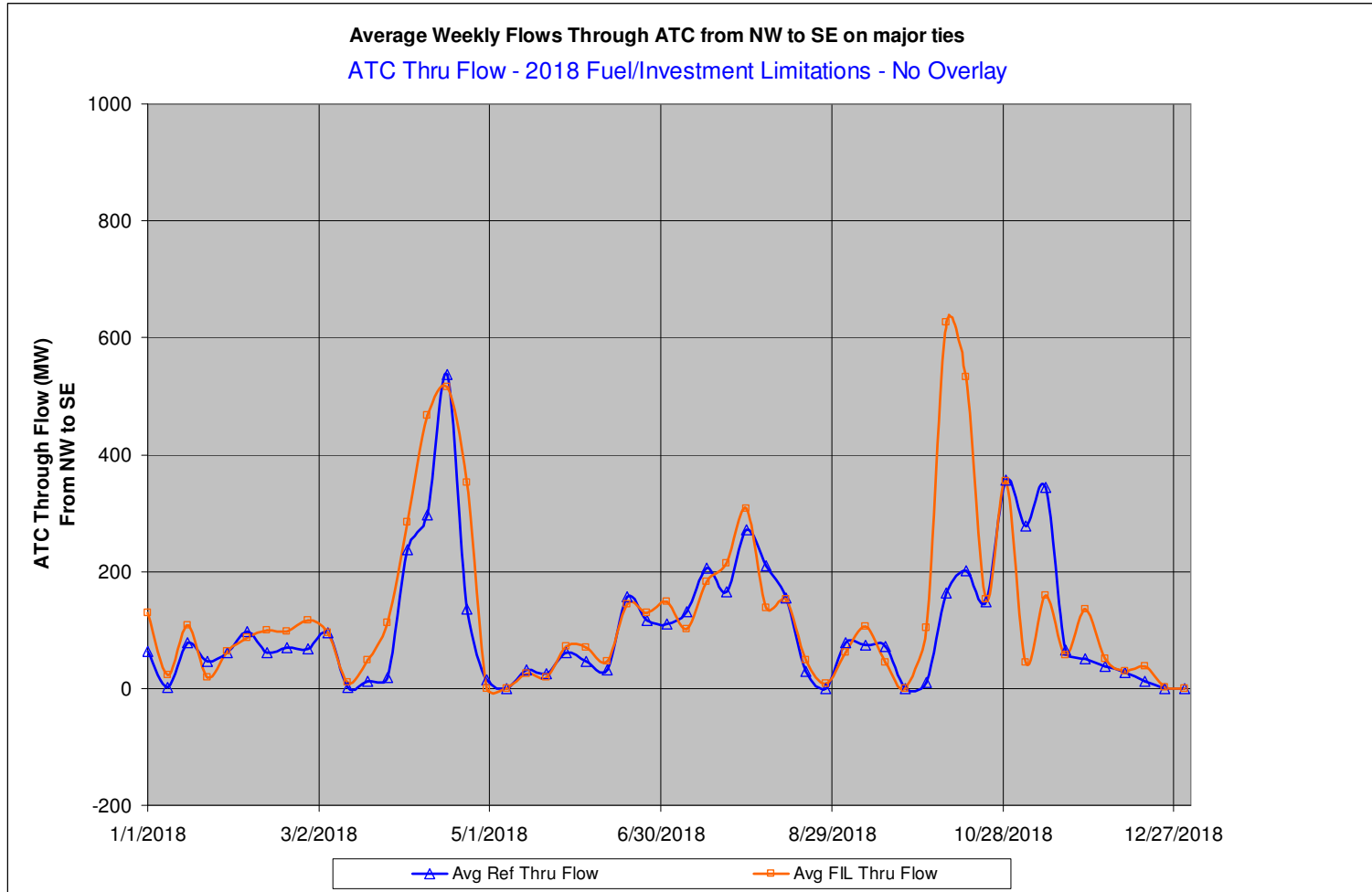


2018 Through Flow Reference vs. High Retirements





2018 Through Flow Reference vs. Fuel/Investment Limits





2018 Through Flow Reference vs. DOE 20% Wind

