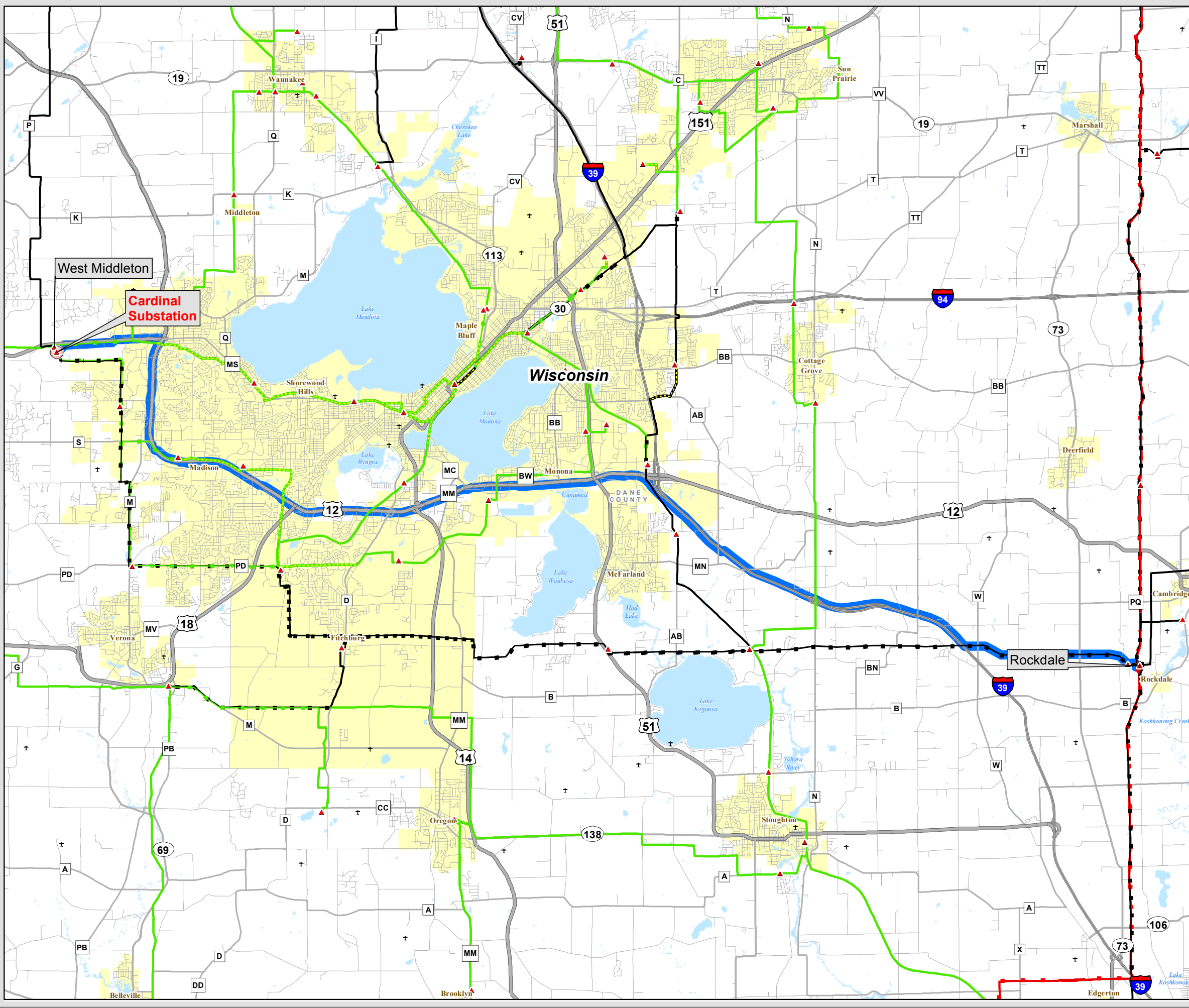


**TRANSMISSION LINE
REQUIRING NEW RIGHT-OF-WAY**
*Construct 345kV Line from
Rockdale to West Middleton*



Transmission Facilities

Transmission Sites

- ▲ Substation/Switching Yard

Transmission Lines

- | | | |
|----------------|----------------|----------------|
| 69 kV | 138 kV | 345 kV |
| Single Circuit | Single Circuit | Single Circuit |
| Double Circuit | Double Circuit | Double Circuit |
| Underground | Underground | |

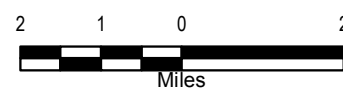
- ▲ Proposed Substation

- PSCW Approved Route

City/Village

Open Water

Base Map Data Sources: ATC, WDNR, MDNR, PSCW, WDOA, ESRI.



The information presented in this map document is advisory and is intended for reference purposes only. American Transmission Company owned and operated facility locations are approximate.

