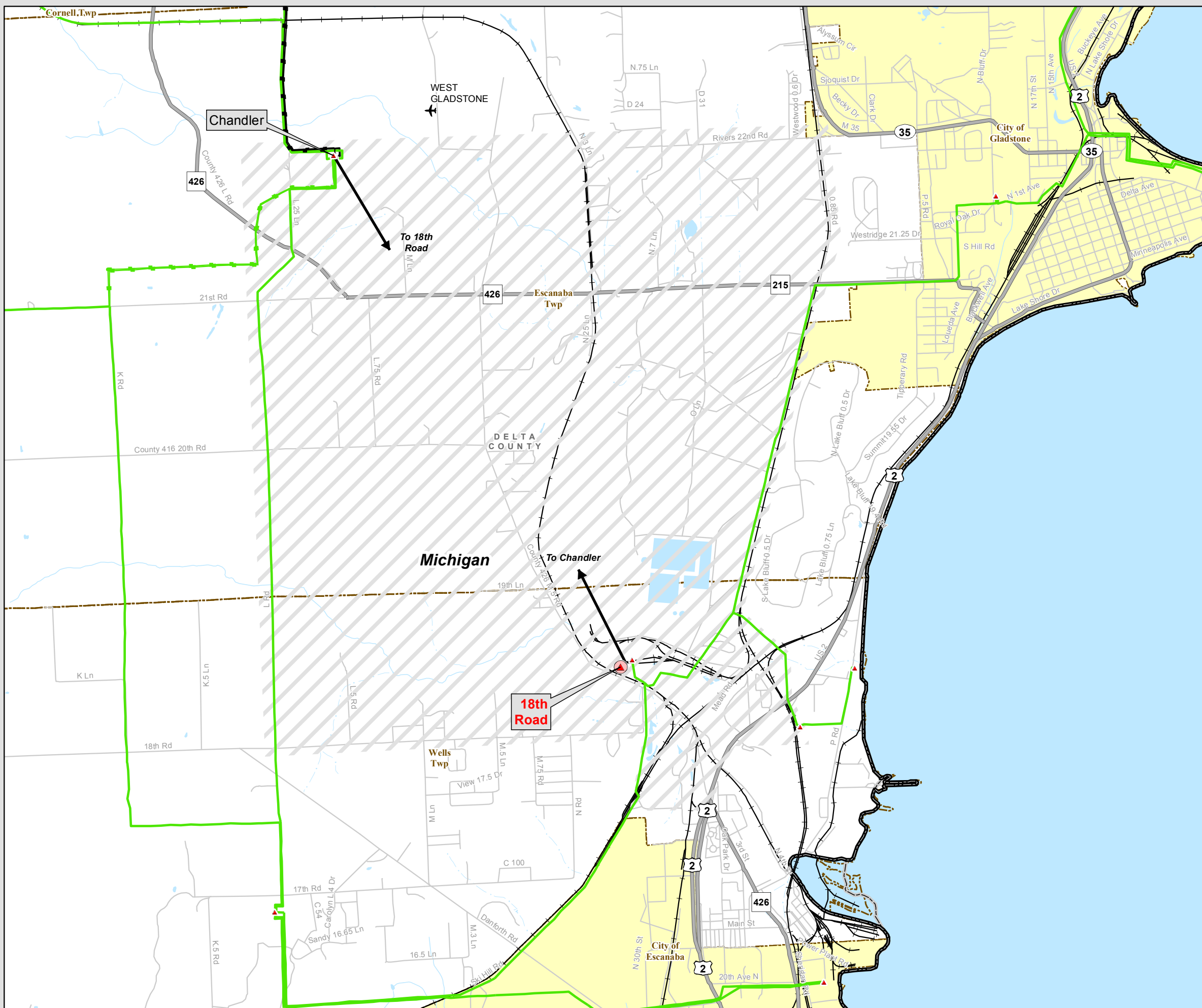


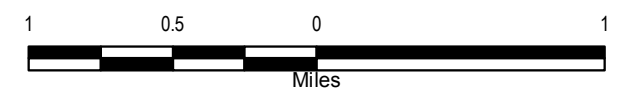
**TRANSMISSION LINE  
REQUIRING NEW RIGHT-OF-WAY**  
*Construct 18th Road-Chandler  
Double Circuit 138kV Lines and  
Operate at 138/69kV*



- Transmission Facilities**
- Transmission Sites
  - ▲ Substation/Switching Yard
- Transmission Lines**
- 69 kV Single Circuit (Green line)
  - 69 kV Double Circuit (Thick Green line)
  - 138 kV Single Circuit (Red line)
  - 138 kV Double Circuit (Thick Red line)

- ▲ Proposed Substation
- ▨ Project Study Area

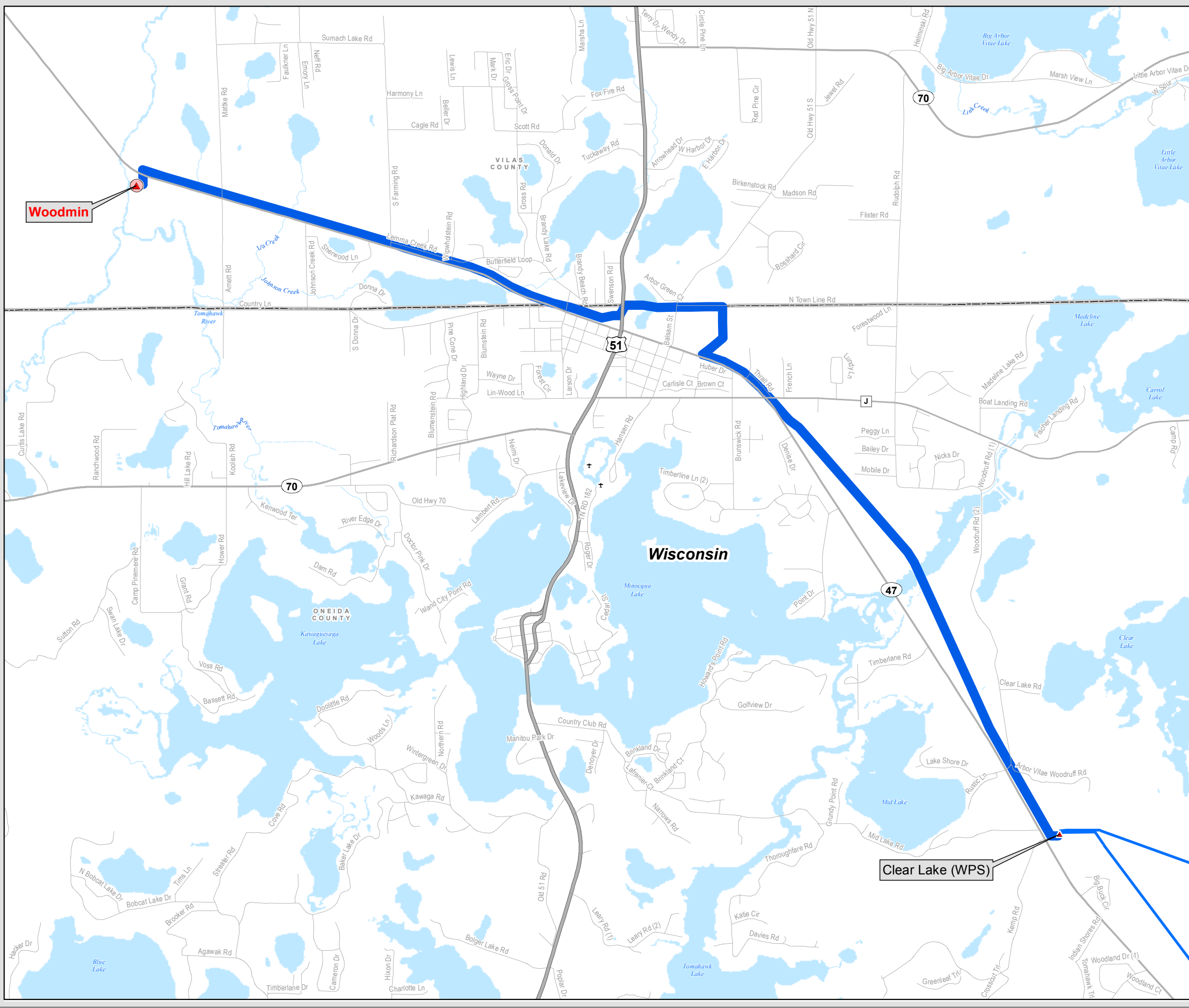
- Railroad
  - Yellow Area: City/Village
  - Blue Area: Open Water
  - Blue Line: River/Stream
- Base Map Data Sources: ATC, WDNR, MDNR, PSCW, WDOA, ESRI, FAA.



The information presented in this map document is advisory and is intended for reference purposes only. American Transmission Company owned and operated facility locations are approximate.



**TRANSMISSION LINE  
REQUIRING NEW RIGHT-OF-WAY**  
*Construct 115kV Line from  
New Woodmin Substation to  
Clear Lake Substation*

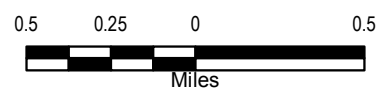


- Transmission Facilities**
- Transmission Sites
  - ▲ Substation/Switching Yard
- Transmission Lines**
- 115 kV
  - Single Circuit

- ▲ Proposed Substation
- █ PSCW Approved Route

- City/Village
- Open Water

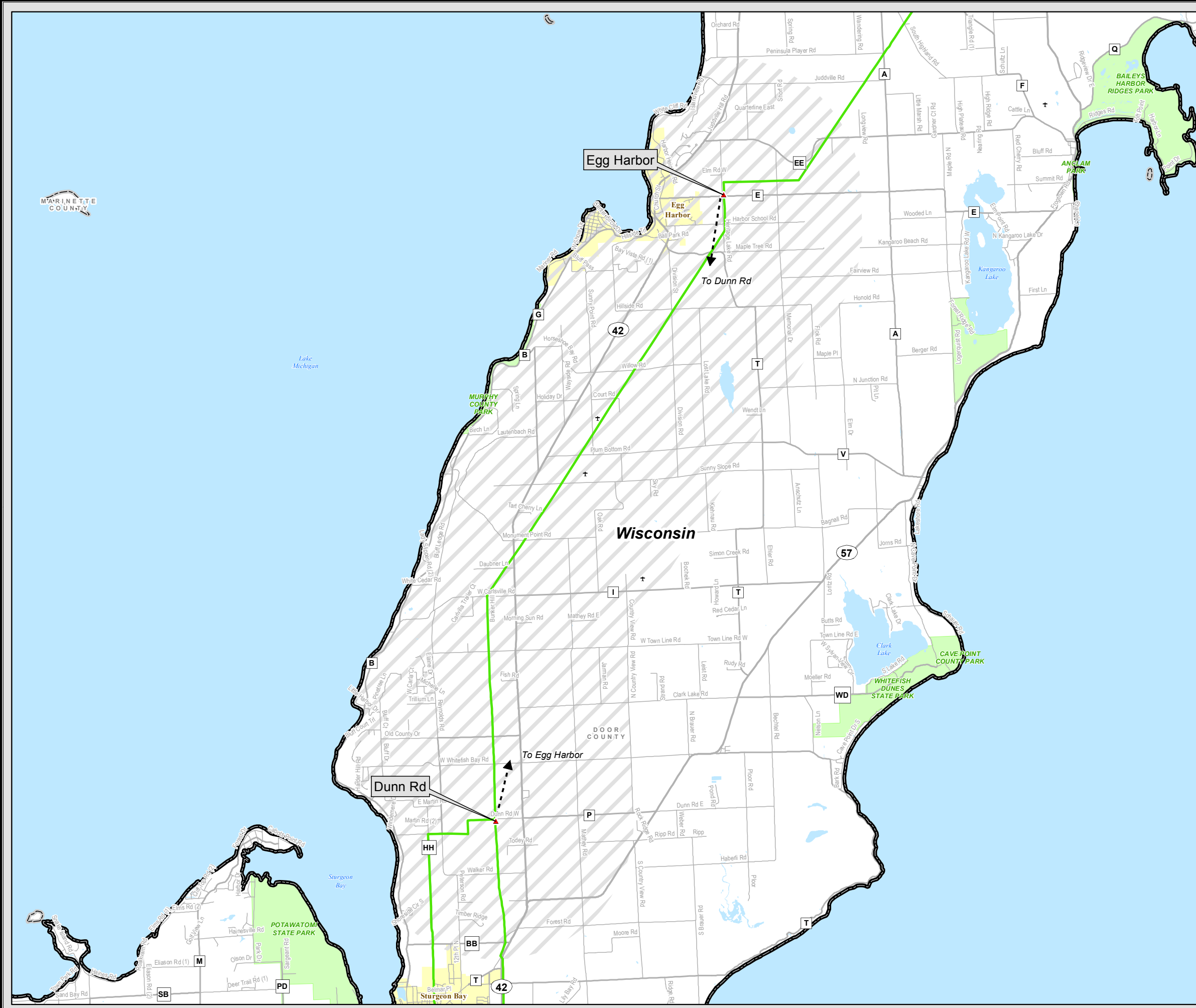
Base Map Data Sources: ATC, WDNR, MDNR, PSCW, WDOA, ESRI.



The information presented in this map document is advisory and is intended for reference purposes only. American Transmission Company owned and operated facility locations are approximate.



**TRANSMISSION LINE  
REQUIRING NEW RIGHT-OF-WAY**  
*Construct Second Dunn Road-Egg Harbor  
69kV Line*



**Transmission Facilities**

Transmission Sites

▲ Substation/Switching Yard

**Transmission Lines**

69 kV

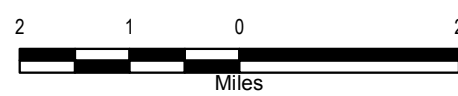
Single Circuit

Double Circuit

○ Preliminary Screening Area

	City/Village		Park Areas
	Open Water		

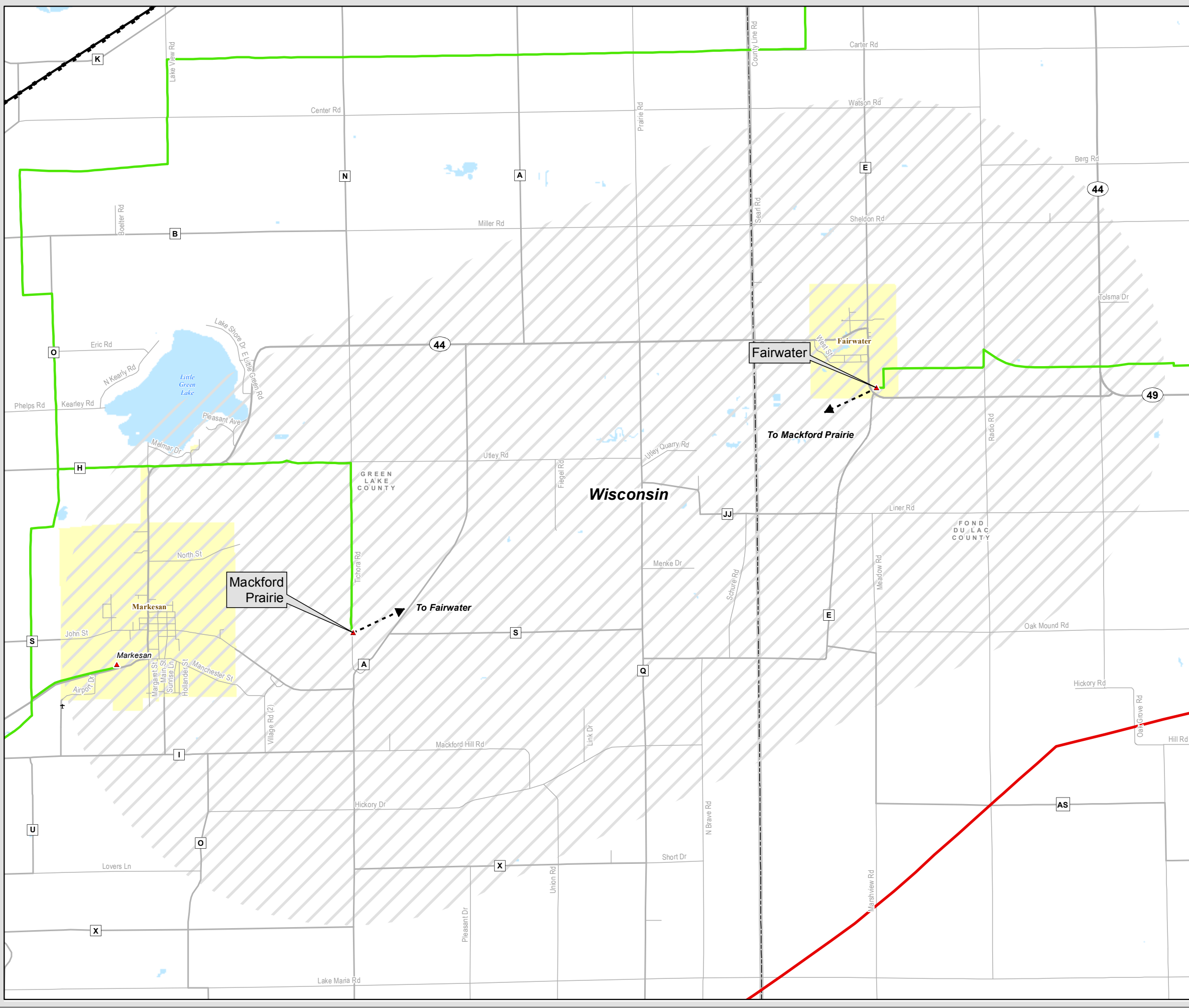
Base Map Data Sources: ATC, WDNR, MDNR, PSCW, WDOA, ESRI.



The information presented in this map document is advisory and is intended for reference purposes only. American Transmission Company owned and operated facility locations are approximate.



**TRANSMISSION LINE  
REQUIRING NEW RIGHT-OF-WAY**  
*Construct Fairwater-Mackford Prairie 69 kV Line*



**Transmission Facilities**

**Transmission Sites**

- ▲ Substation/Switching Yard

**Transmission Lines**

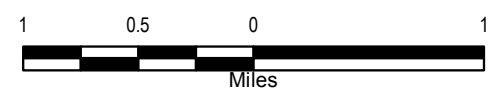
- |                      |                       |                       |
|----------------------|-----------------------|-----------------------|
| 69 kV Single Circuit | 138 kV Single Circuit | 345 kV Single Circuit |
| 69 kV Double Circuit | 138 kV Double Circuit | 345 kV Double Circuit |

- Preliminary Screening Area

City/Village

Open Water

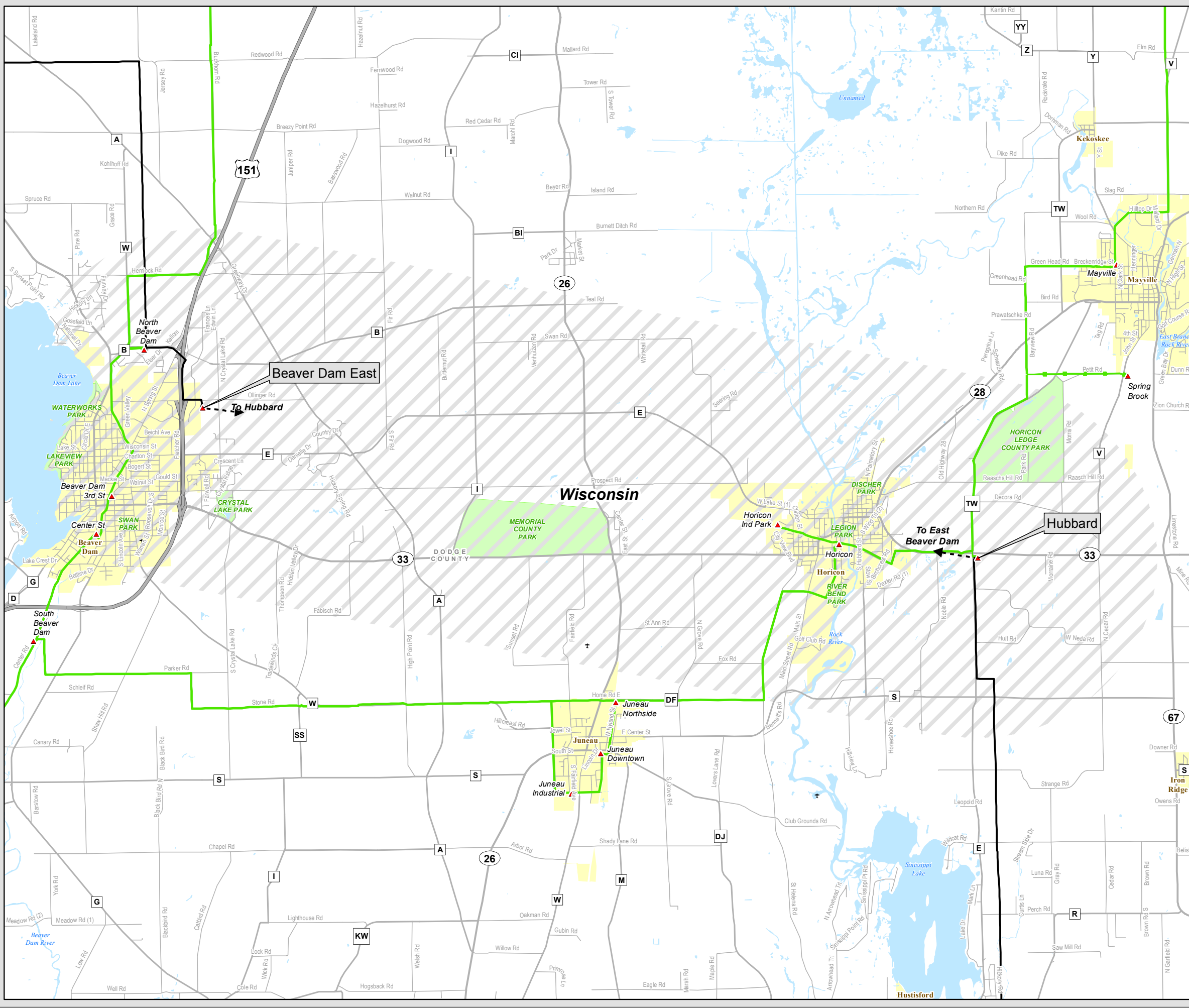
Base Map Data Sources: ATC, WDNR, MDNR, PSCW, WDOA, ESRI.



The information presented in this map document is advisory and is intended for reference purposes only. American Transmission Company owned and operated facility locations are approximate.



**TRANSMISSION LINE  
REQUIRING NEW RIGHT-OF-WAY**  
*Construct Hubbard-East Beaver Dam 138kV Line*



**Transmission Facilities**

- Transmission Sites
- ▲ Substation/Switching Yard

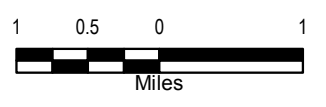
**Transmission Lines**

- 69 kV Single Circuit
- 69 kV Double Circuit
- 138 kV Single Circuit
- 138 kV Double Circuit

Preliminary Screening Area

- City/Village
- Park Areas
- Open Water

Base Map Data Sources: ATC, WDNR, MDNR, PSCW, WDOA, ESRI.

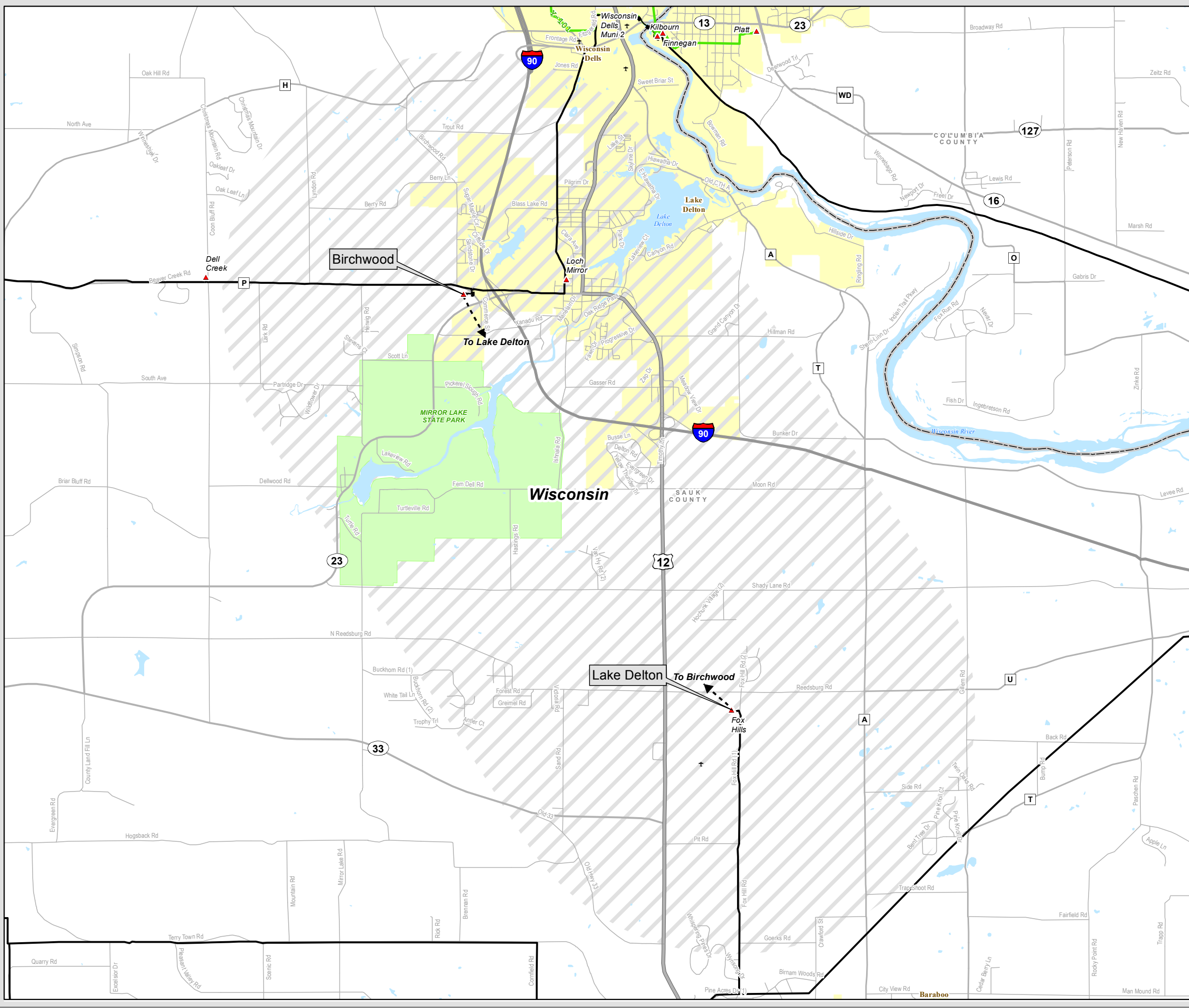


The information presented in this map document is advisory and is intended for reference purposes only. American Transmission Company owned and operated facility locations are approximate.



# TRANSMISSION LINE REQUIRING NEW RIGHT-OF-WAY

Construct Lake Delton-Birchwood 138kV Line



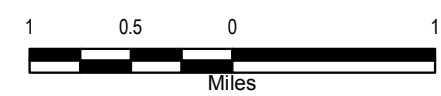
**Transmission Facilities**  
Transmission Sites  
▲ Substation/Switching Yard

**Transmission Lines**  
69 kV Single Circuit  
69 kV Double Circuit  
138 kV Single Circuit  
138 kV Double Circuit

○ Preliminary Screening Area

● City/Village    ● Park Areas  
● Open Water

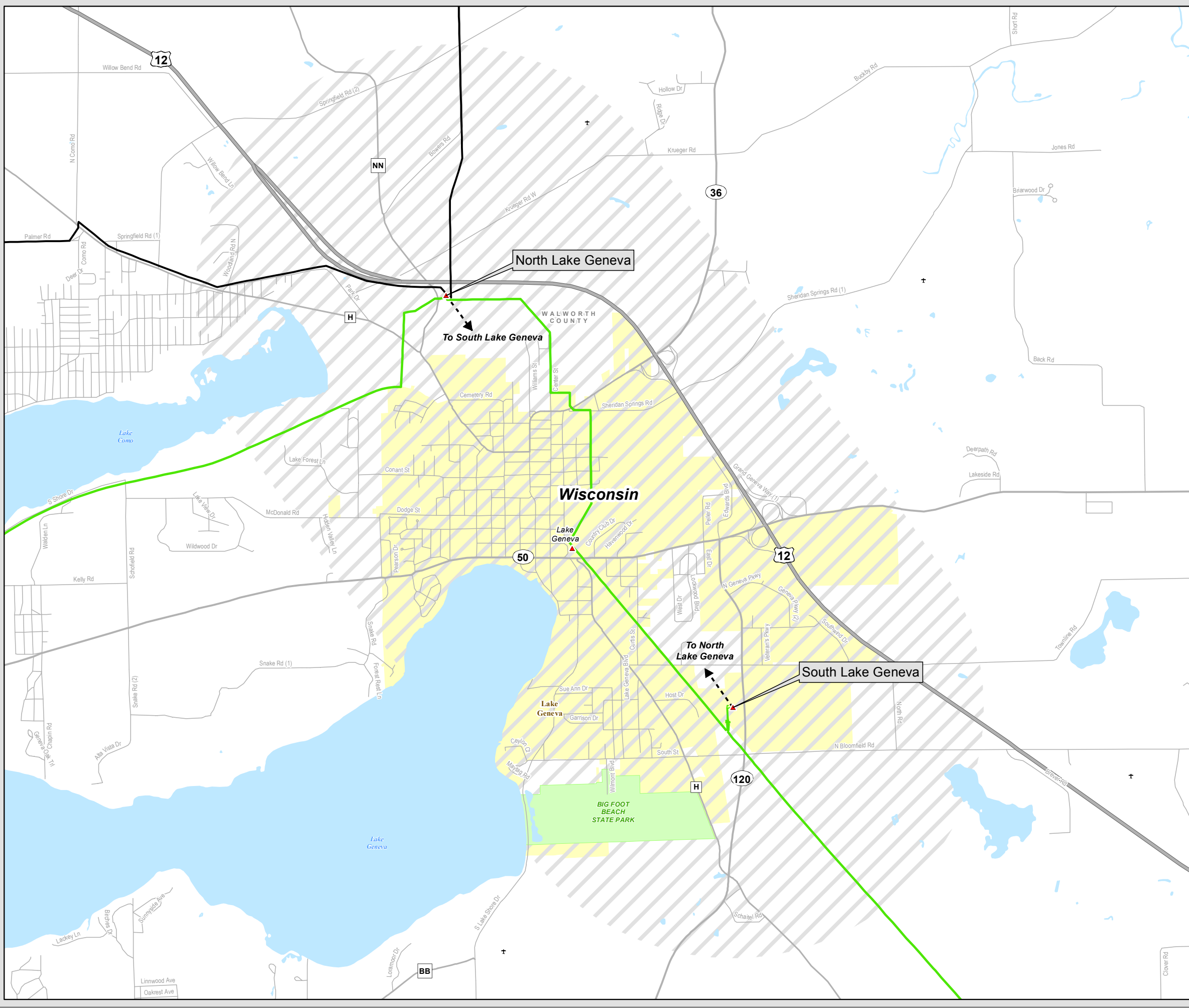
Base Map Data Sources: ATC, WDNR, MDNR, PSCW, WDOA, ESRI.



The information presented in this map document is advisory and is intended for reference purposes only. American Transmission Company owned and operated facility locations are approximate.



**TRANSMISSION LINE  
REQUIRING NEW RIGHT-OF-WAY**  
Construct North Lake Geneva-South Lake Geneva  
New 138 kV Line



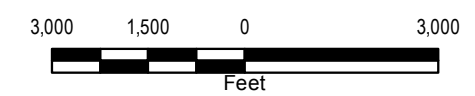
**Transmission Facilities**  
 Transmission Sites  
 ▲ Substation/Switching Yard

**Transmission Lines**  
 69 kV Single Circuit (solid green line)  
 69 kV Double Circuit (dashed green line)  
 138 kV Single Circuit (solid black line)  
 138 kV Double Circuit (dashed black line)

○ Preliminary Screening Area

	City/Village		Park Areas
	Open Water		

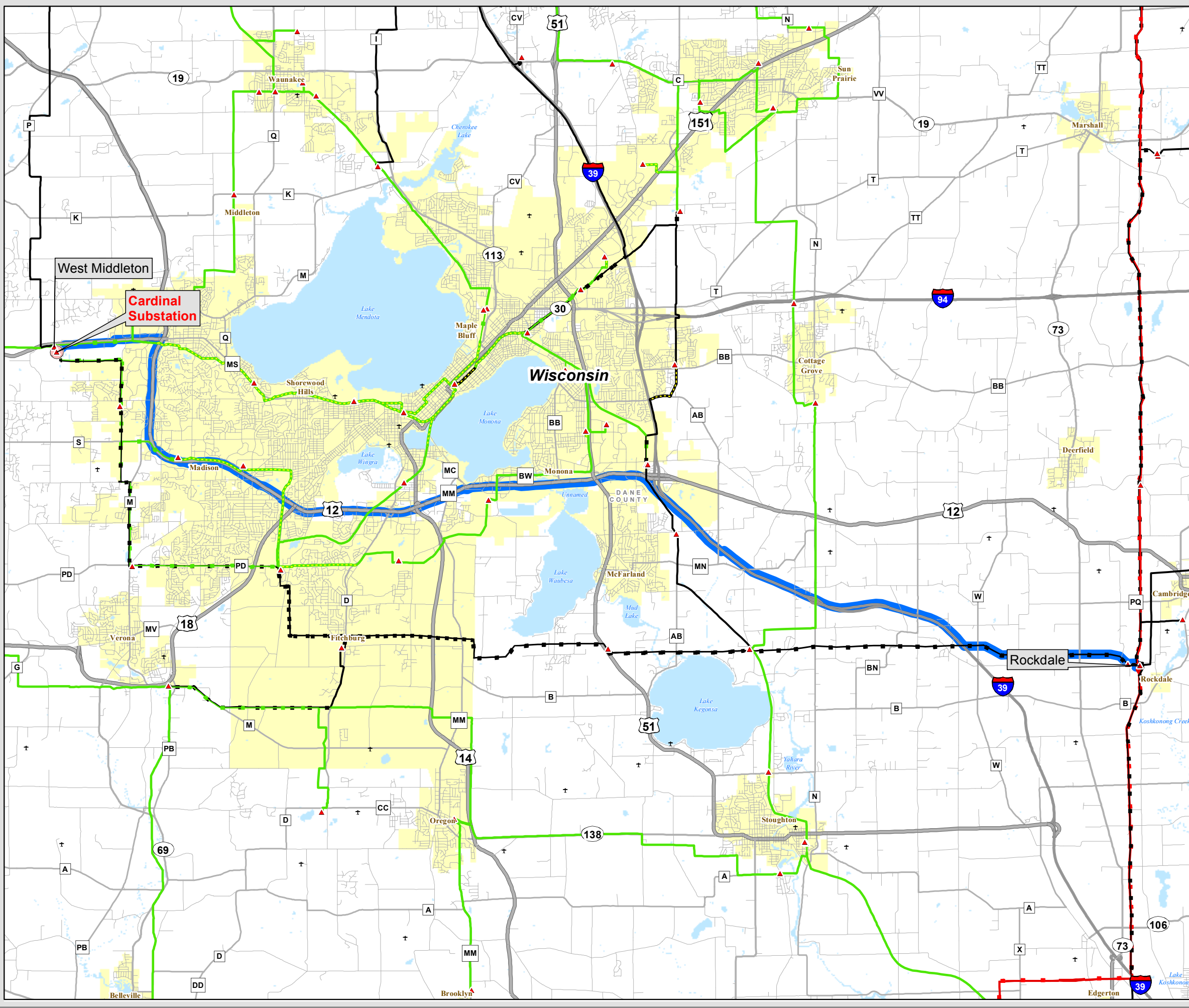
Base Map Data Sources: ATC, WDNR, MDNR, PSCW, WDOA, ESRI.



The information presented in this map document is advisory and is intended for reference purposes only. American Transmission Company owned and operated facility locations are approximate.



**TRANSMISSION LINE  
REQUIRING NEW RIGHT-OF-WAY**  
Construct 345kV Line from  
Rockdale to West Middleton



**Transmission Facilities**

**Transmission Sites**

- ▲ Substation/Switching Yard

**Transmission Lines**

- |                |                |                |
|----------------|----------------|----------------|
| 69 kV          | 138 kV         | 345 kV         |
| Single Circuit | Single Circuit | Single Circuit |
| Double Circuit | Double Circuit | Double Circuit |
| Underground    | Underground    |                |

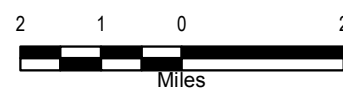
- ▲ Proposed Substation

- PSCW Approved Route

City/Village

Open Water

Base Map Data Sources: ATC, WDNR, MDNR, PSCW, WDOA, ESRI.

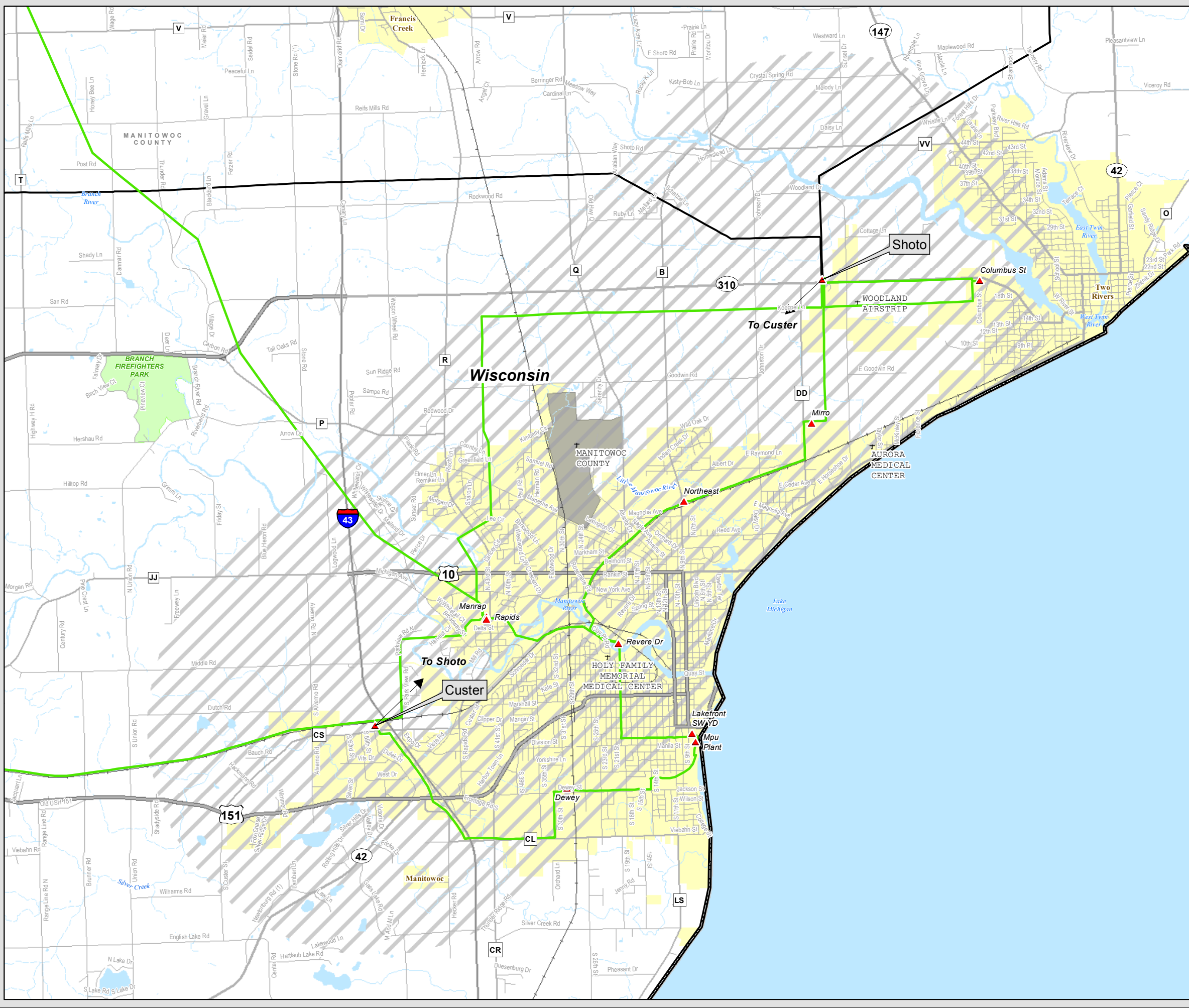


The information presented in this map document is advisory and is intended for reference purposes only. American Transmission Company owned and operated facility locations are approximate.





**TRANSMISSION LINE  
REQUIRING NEW RIGHT-OF-WAY**  
*Construct Shoto to Custer 138 kV Line*



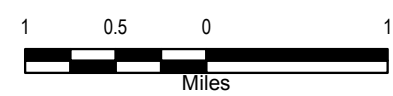
- Transmission Facilities**
- Transmission Sites
  - ▲ Substation/Switching Yard
- Transmission Lines**
- 69 kV Single Circuit (Green line)
  - 69 kV Double Circuit (Green line with double dashes)
  - 138 kV Single Circuit (Red line)
  - 138 kV Double Circuit (Red line with double dashes)

- ▲ Proposed Substation
- ▨ Preliminary Screening Area

City/Village
  Park Areas

Open Water

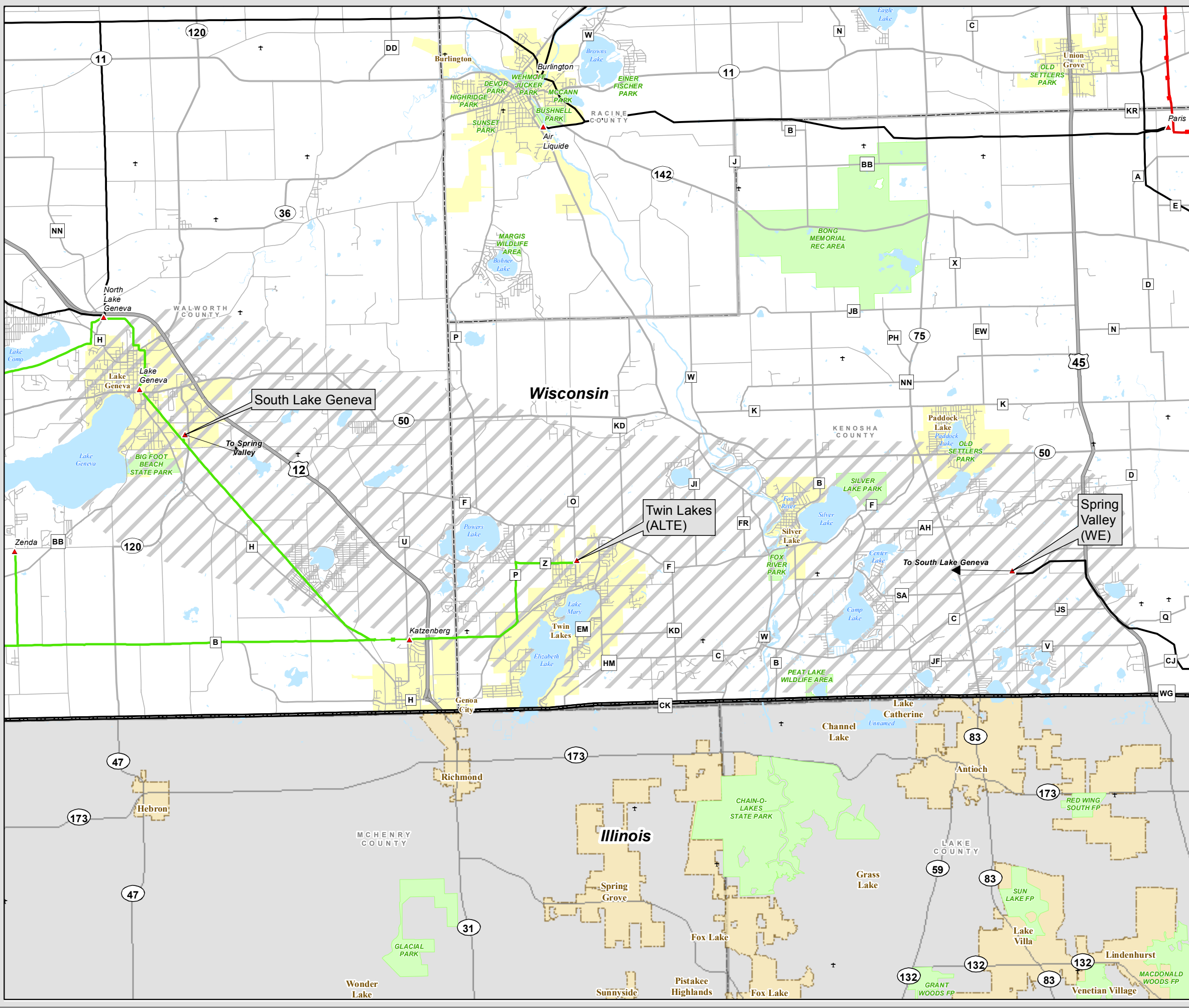
Base Map Data Sources: ATC, WDNR, MDNR, PSCW, WDOA, ESRI.



The information presented in this map document is advisory and is intended for reference purposes only. American Transmission Company owned and operated facility locations are approximate.



**TRANSMISSION LINE  
REQUIRING NEW RIGHT-OF-WAY**  
Construct Spring Valley-Twin Lakes-  
South Lake Geneva 138kV Line



**Transmission Facilities**

- Transmission Sites
- ▲ Substation/Switching Yard

**Transmission Lines**

- 69 kV Single Circuit
- 69 kV Double Circuit
- 138 kV Single Circuit
- 138 kV Double Circuit

○ Preliminary Screening Area

City/Village  
 Open Water  
 Park Areas

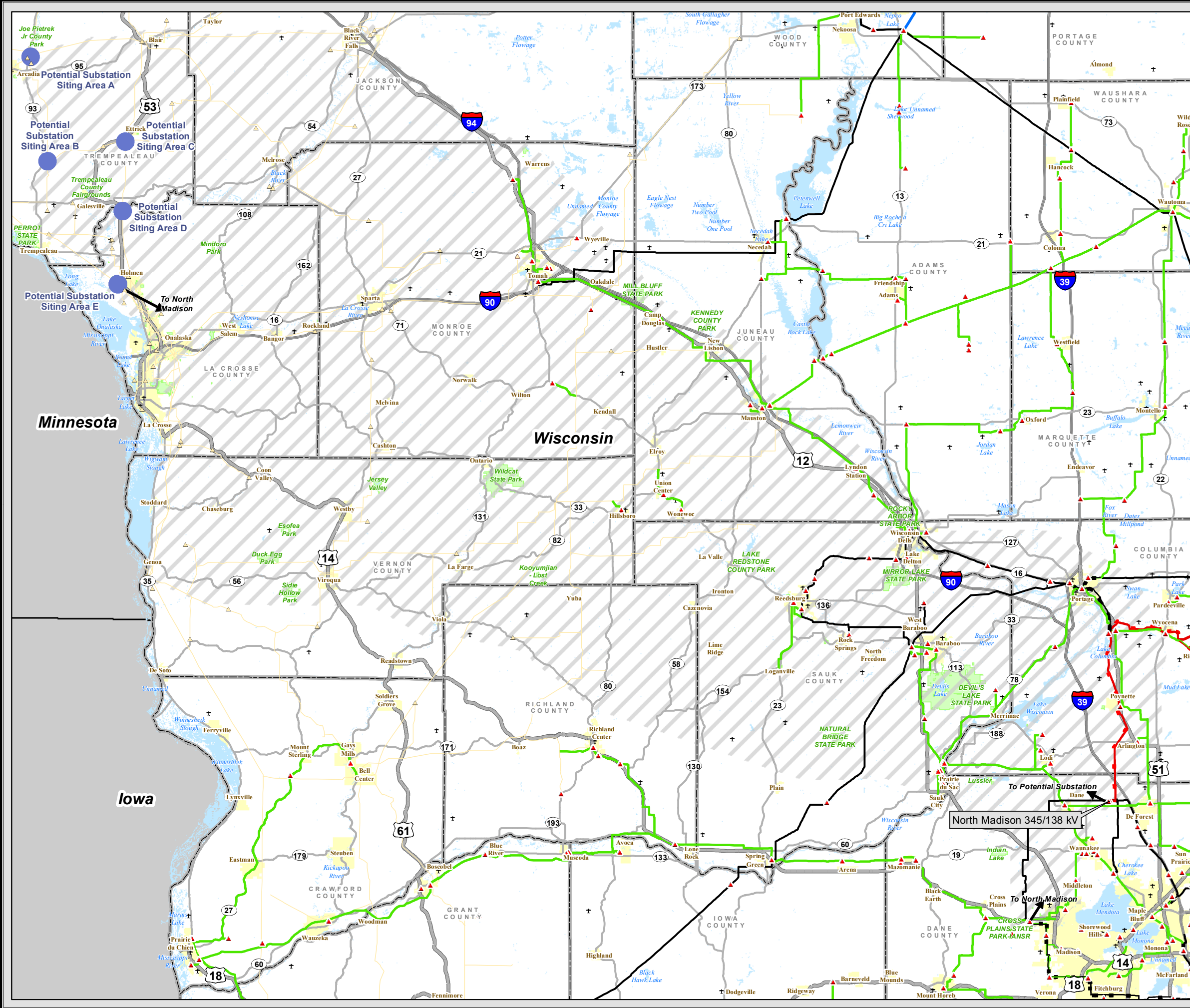
Base Map Data Sources: ATC, WDNR, MDNR, PSCW, WDOA, ESRI.



The information presented in this map document is advisory and is intended for reference purposes only. American Transmission Company owned and operated facility locations are approximate.



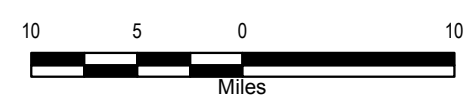
**TRANSMISSION LINE  
REQUIRING NEW RIGHT-OF-WAY**  
*Construct Badger Coulee 345kV Line*



**Transmission Facilities**

- Transmission Sites
  - ▲ Substation/Switching Yard
  - △ Non-ATC Substation
- Transmission Lines
  - 69 kV Single Circuit (Green line)
  - 69 kV Double Circuit (Green line with double dashes)
  - 138 kV Single Circuit (Black line)
  - 138 kV Double Circuit (Black line with double dashes)
  - 345 kV Single Circuit (Red line)
  - 345 kV Double Circuit (Red line with double dashes)
  - Non-ATC Transmission Line (Yellow line)
- Potential Substation Siting Area (Blue oval)
- Study Area (Hatched area)
- Park Areas (Green oval)
- City/Village (Yellow oval)
- Open Water (Blue oval)

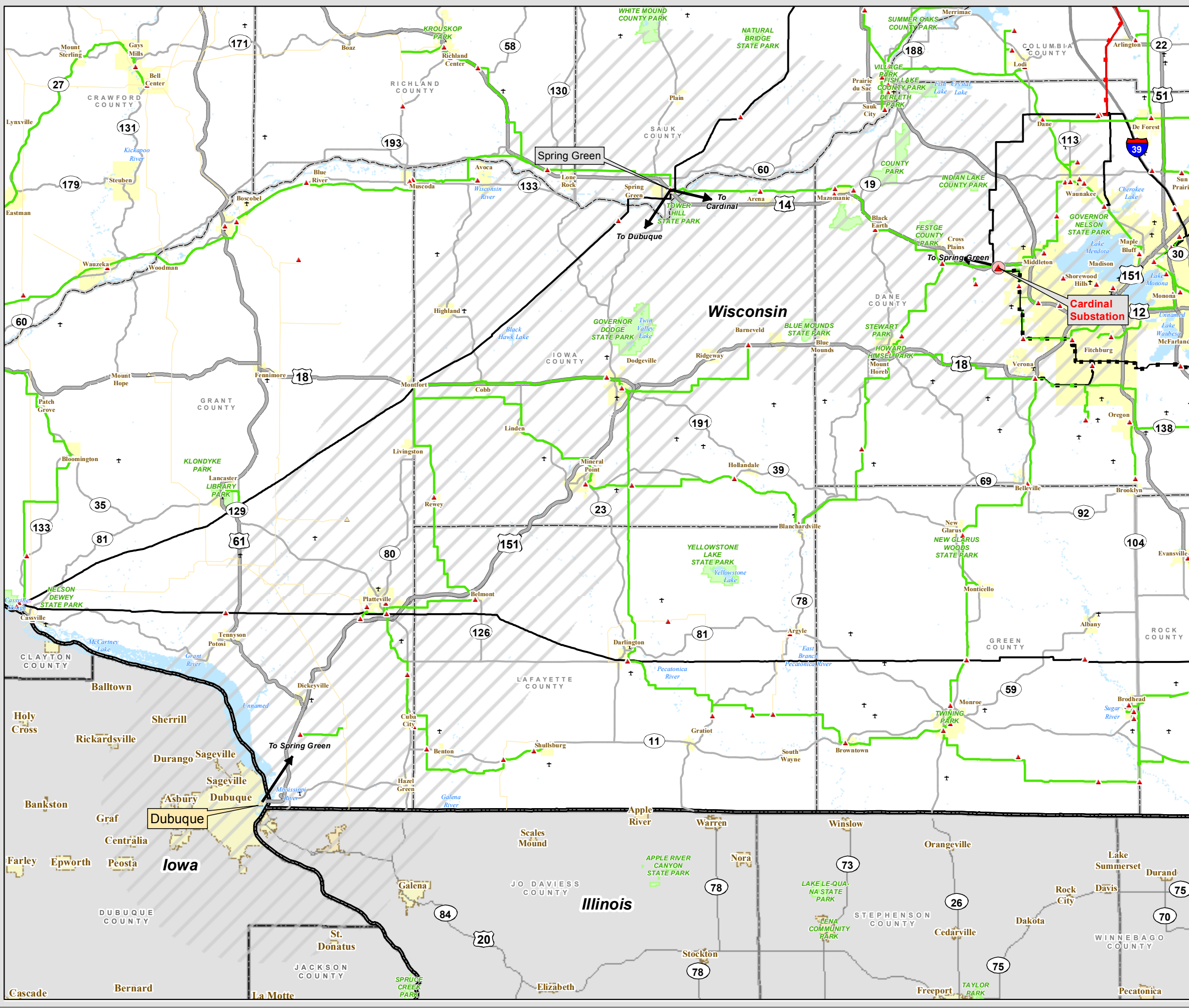
Base Map Data Sources: ATC, WDNR, MDNR, PSCW, WDOA, ESRI.



The information presented in this map document is advisory and is intended for reference purposes only. American Transmission Company owned and operated facility locations are approximate.



**TRANSMISSION LINE  
REQUIRING NEW RIGHT-OF-WAY**  
*Construct Dubuque-  
Spring Green-Cardinal 345kV Line*



**Transmission Facilities**

**Transmission Sites**

- Substation/Switching Yard
- Non-ATC Substation

**Transmission Lines**

- 69 kV Single Circuit
- 69 kV Double Circuit
- 138 kV Single Circuit
- 138 kV Double Circuit
- 345 kV Single Circuit
- 345 kV Double Circuit
- Non-ATC Transmission Line

Proposed Substation

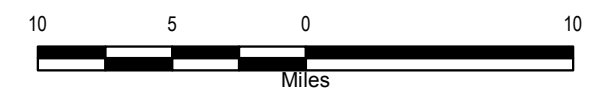
Preliminary Screening Area

Park Areas

City/Village

Open Water

Base Map Data Sources: ATC, WDNR, MDNR, PSCW, WDOA, ESRI.

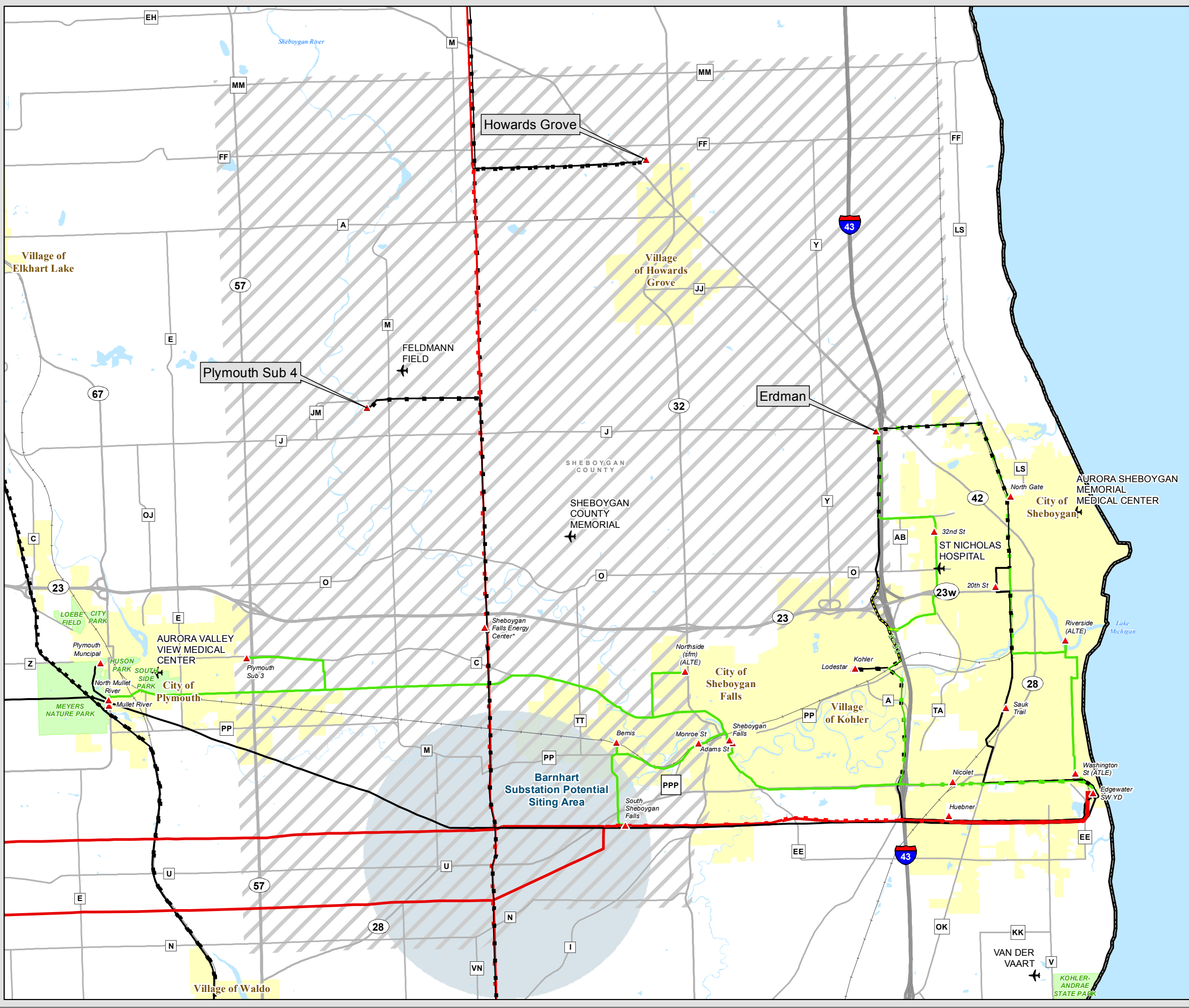


The information presented in this map document is advisory and is intended for reference purposes only. American Transmission Company owned and operated facility locations are approximate.



**TRANSMISSION LINE  
REQUIRING NEW RIGHT-OF-WAY**

*Construct Erdman-Howards Grove-  
Plymouth #4-Barnhart 138kV Line*



**Transmission Facilities**

**Transmission Sites**

▲ Substation/Switching Yard

**Transmission Lines**

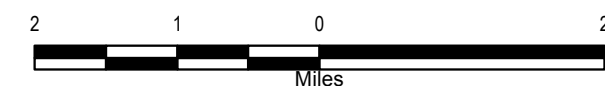
69 kV Single Circuit	138 kV Single Circuit	345 kV Single Circuit
69 kV Double Circuit	138 kV Double Circuit	345 kV Double Circuit

○ Potential Substation Siting Area

▨ Project Study Area

— Railroad	● Park Areas
● City/Village	● Open Water
	— River/Stream

Base Map Data Sources: ATC, WDNR, MDNR, PSCW, WDOA, ESRI, FAA.

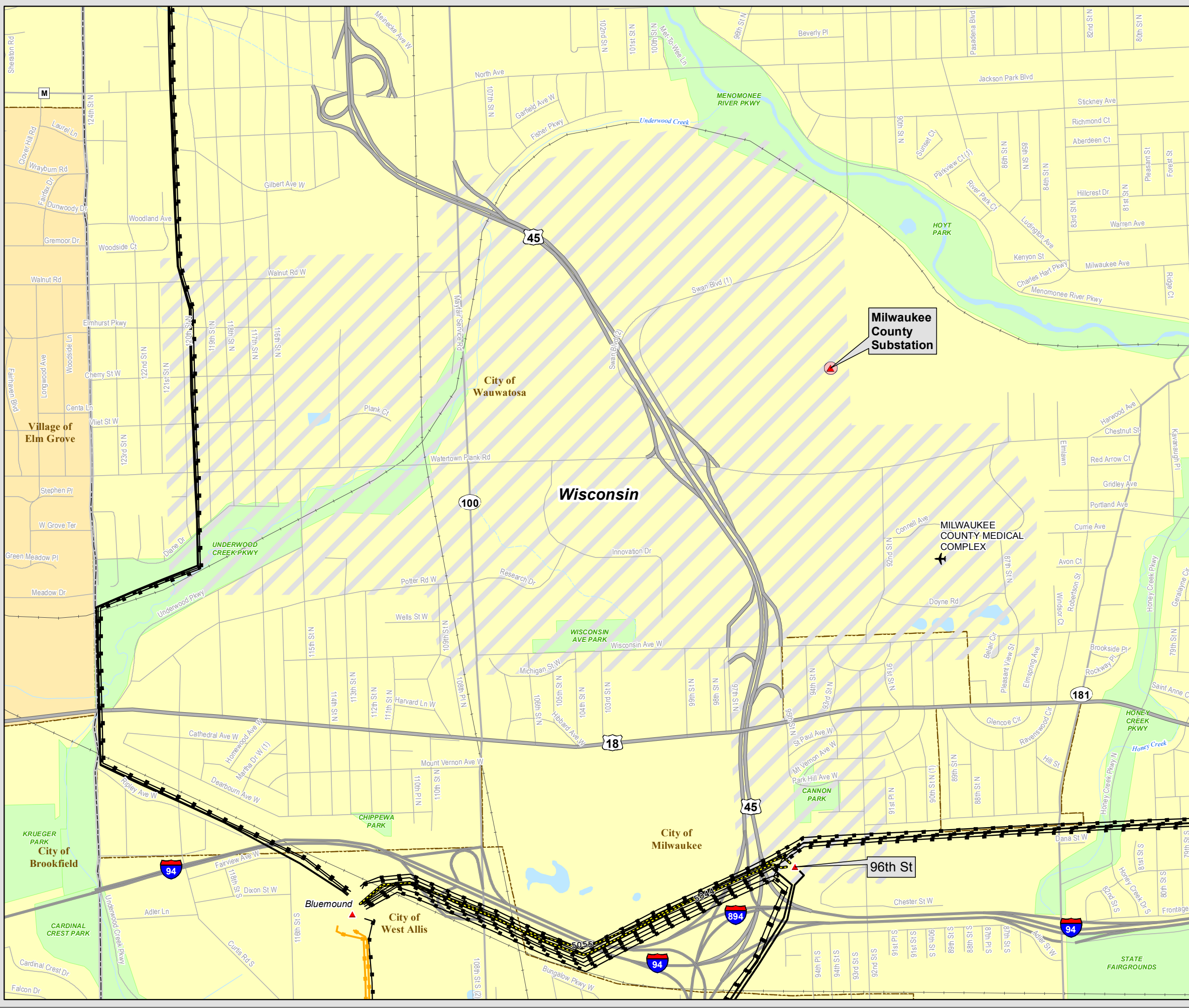


The information presented in this map document is advisory and is intended for reference purposes only. American Transmission Company owned and operated facility locations are approximate.



**TRANSMISSION LINE  
REQUIRING NEW RIGHT-OF-WAY**

*Construct Double Circuit 138 kV Line to  
Serve Milwaukee County T-D Interconnection*



**Transmission Facilities**

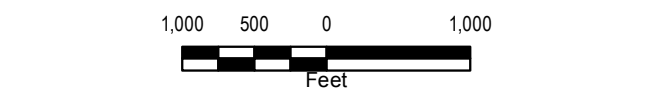
**Transmission Sites**

- ▲ Substation/Switching Yard

**Transmission Lines**


- Proposed Substation
- Project Study Area

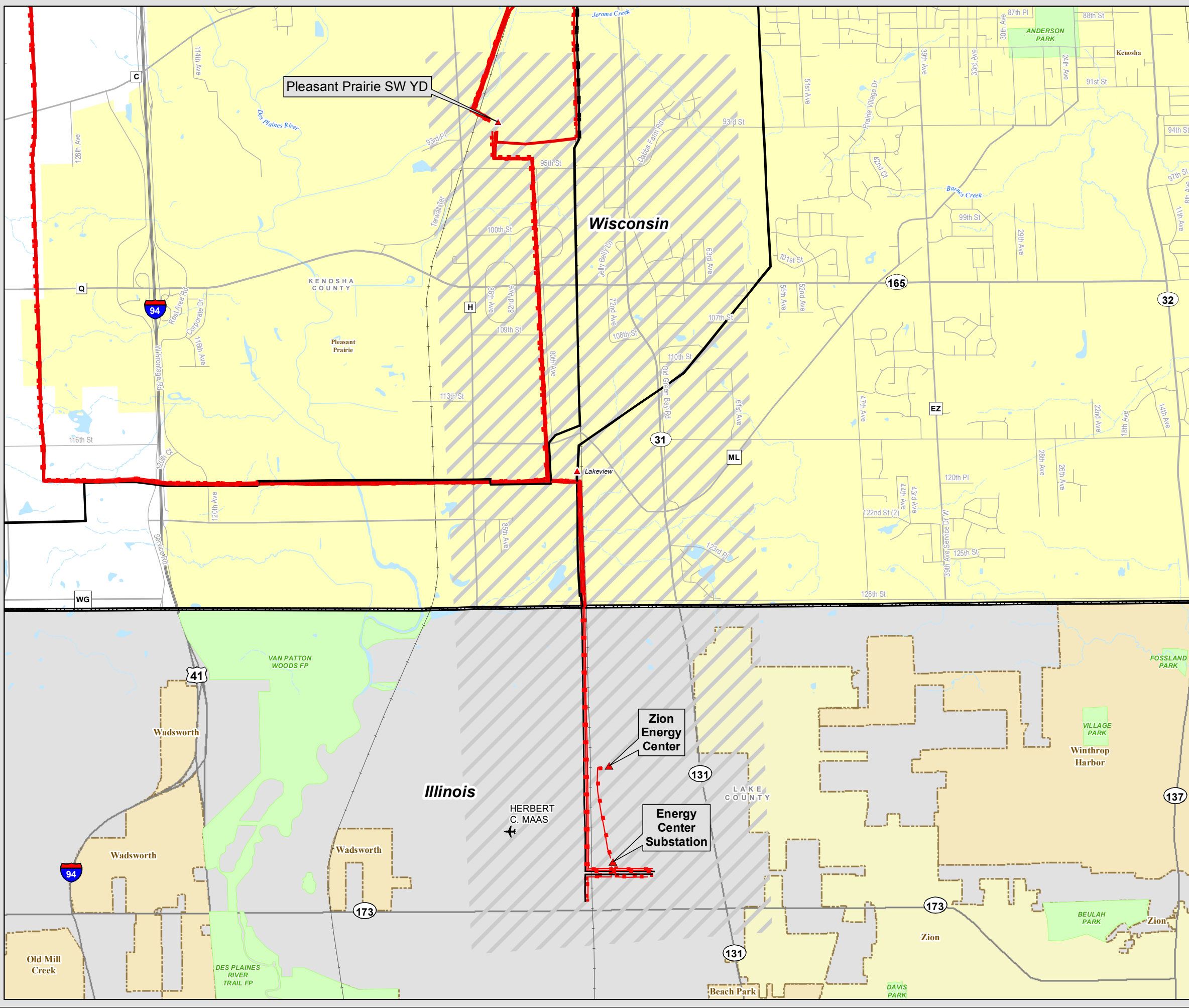

Base Map Data Sources: ATC, WDNR, MDNR, PSCW, WDOA, ESRI, FAA.



The information presented in this map document is advisory and is intended for reference purposes only. American Transmission Company owned and operated facility locations are approximate.

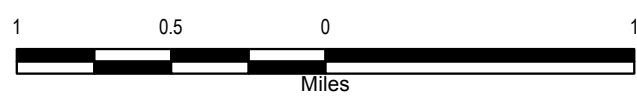


**TRANSMISSION LINE  
REQUIRING NEW RIGHT-OF-WAY**  
*Construct Pleasant Prairie-Zion Energy Center  
345kV Line*



- Transmission Facilities**
- Transmission Sites
  - ▲ Substation/Switching Yard
- Transmission Lines**
- |                |                |                |
|----------------|----------------|----------------|
| 69 kV          | 138 kV         | 345 kV         |
| Double Circuit | Double Circuit | Double Circuit |

- Project Study Area
- |              |              |
|--------------|--------------|
| Railroad     | Park Areas   |
| City/Village | Open Water   |
|              | River/Stream |
- Base Map Data Sources: ATC, WDNR, MDNR, PSCW, WDOA, ESRI, FAA.



The information presented in this map document is advisory and is intended for reference purposes only. American Transmission Company owned and operated facility locations are approximate.

