



Eastern Wisconsin Collaborative Update

May 10, 2010

ATC Customer/Stakeholder Meeting



2009 EEI
Edison
Award
Winner





Agenda

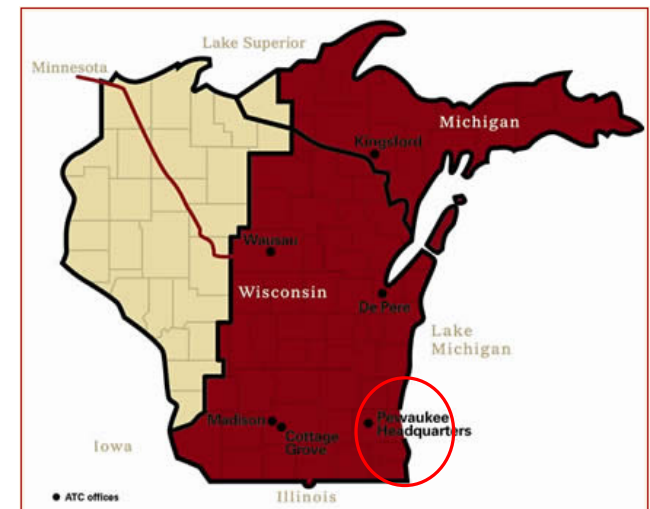
- February 22 Stakeholder Meeting Review
- Southeastern Wisconsin Focus - Studies in Progress
- Short-Term Solutions
- Short and Medium-Term Solutions Summary
- Long-Term Solutions
- Questions?

February 22 Stakeholder Meeting Review

- Stakeholders validated that the area of most concern in eastern Wisconsin was southeastern Wisconsin

- There are number of immediate and long-term concerns in the area
- Follow-up Q&A posted with meeting materials at:

www.atc10yearplan.com/A8.shtml





Southeastern Wisconsin Focus Studies in Progress

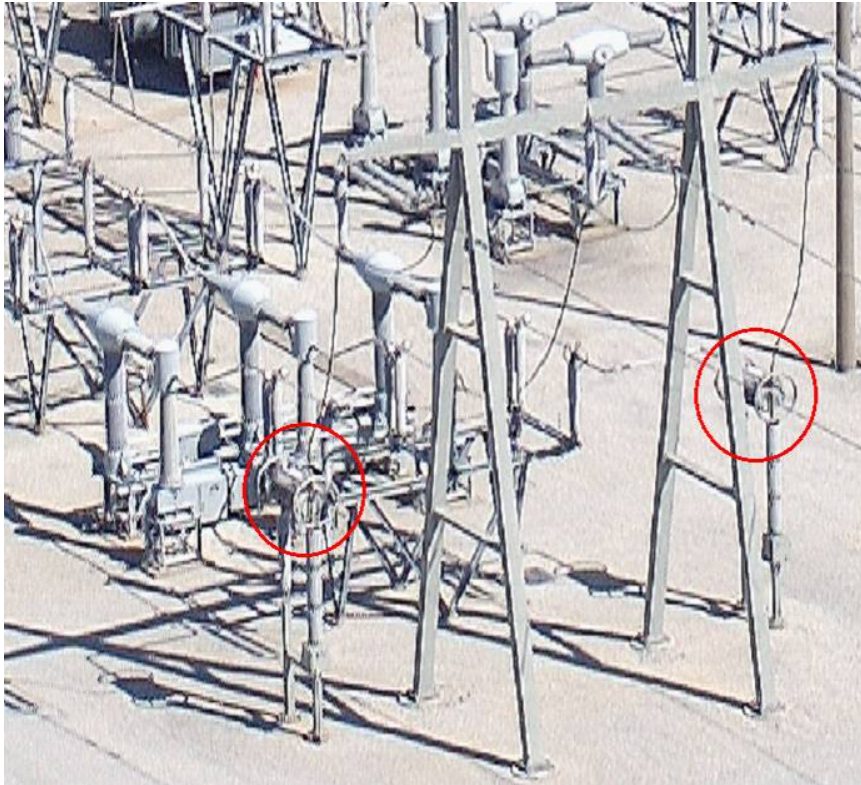
- Economic Analysis – Initial PROMOD analysis of Bain to Zion EC
- 2013 Export Capability analysis
- Reliability analysis
 - Southern Interface Stability Assessment
 - Multiple Contingency Analysis
- Regional studies



Short-Term Solutions

- Identified several projects to increase thermal ratings of existing lines
- Provides benefits to ATC customers by reducing congestion

Short-Term Solutions



- Pleasant Prairie – Zion 345 kV line upgrade
 - Replace wave traps at ComEd’s Zion substation
 - A & C Phase
 - Improves summer emergency line rating
 - 1069 to 1096 MVA
 - Rough cost estimate
 - \$500K



Short and Medium-Term Solutions Summary

- Subsequent limiting elements for export scenario
 - Pleasant Prairie to Zion wave trap – Project Request submitted
 - Pleasant Prairie to Zion line clearance upgrade – Project Request submitted
 - Bain to Kenosha 138 kV line – Substation limits recently addressed
 - The next facility identified in the transfer analysis is the Kenosha–Lakeview 138 kV line which would require a complete rebuild



Long-Term Solutions

- New Tie Line Between ATC and ComEd
 - Alternatives
 - Bain to Zion Energy Center 345 kV line
 - Approximately 6 miles of expanded ROW
 - New 345 kV ring bus
 - Racine to Zion Energy Center 345 kV line
 - Approximately 6 miles of expanded ROW
 - Approximately 12 miles existing 345 kV towers
 - » Use open positions on existing towers between Bain and Racine
 - Utilize existing 345 kV straight-bus design?
 - Suggestions?

Questions?

If you have additional questions, please contact:

Dale Burmester

dburmester@atcllc.com - 608.877.7109

Patrick Gerum

pgerum@atcllc.com - 262.832.8663