



# 2011 10-Year Assessment Preliminary Needs/Solutions

February 2011  
Stakeholder/Customer Presentation

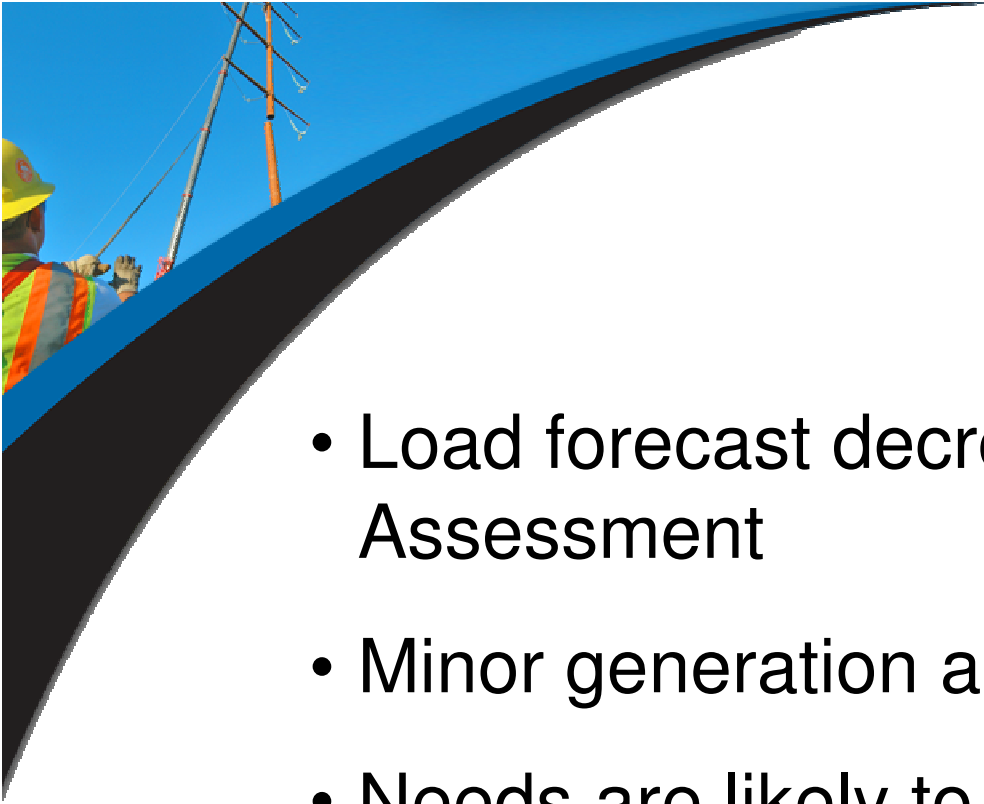
Helping to **keep the lights on**,  
businesses running and communities strong®





## Purpose

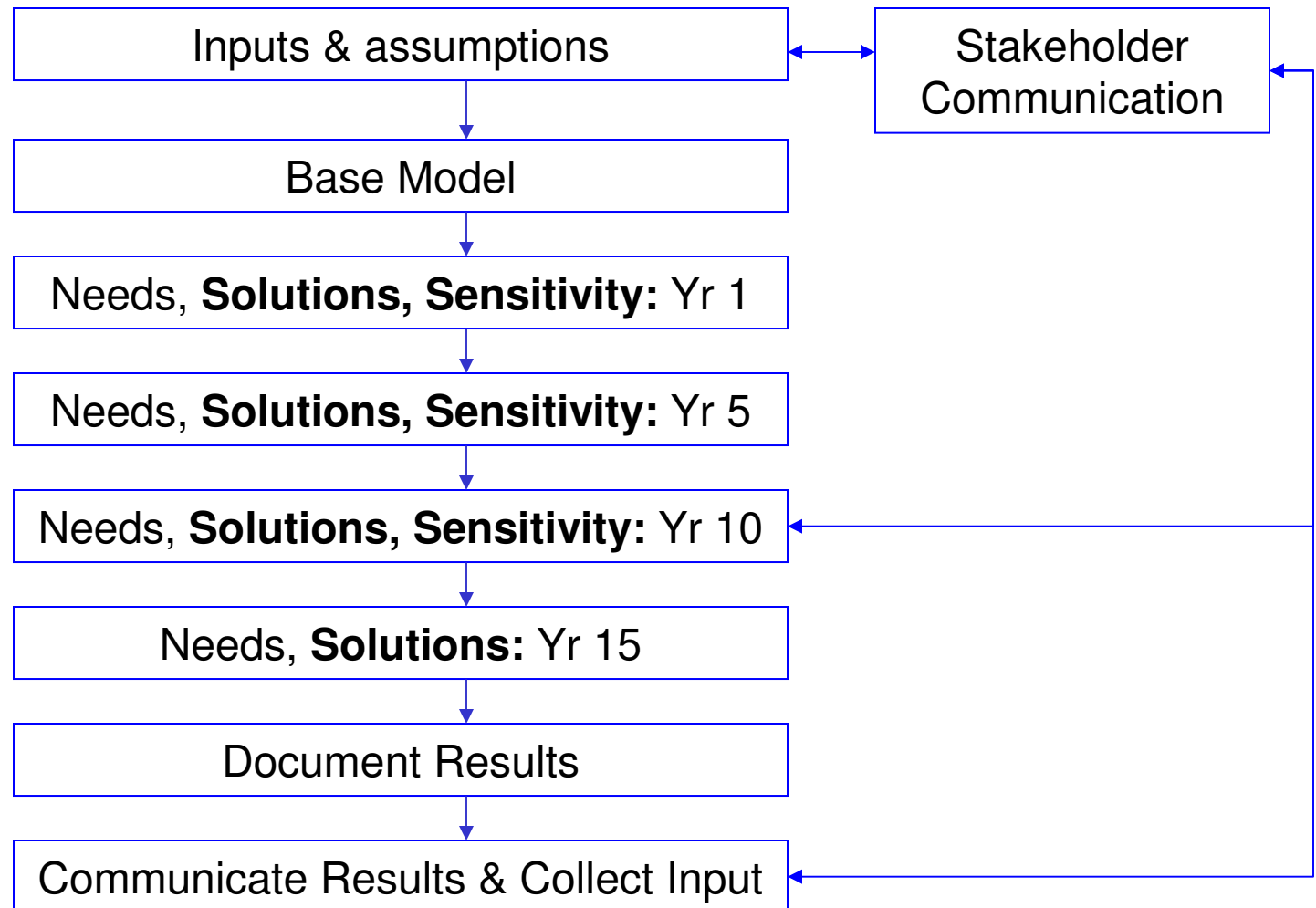
- Information/process update
- Preliminary Needs
- Input on needs



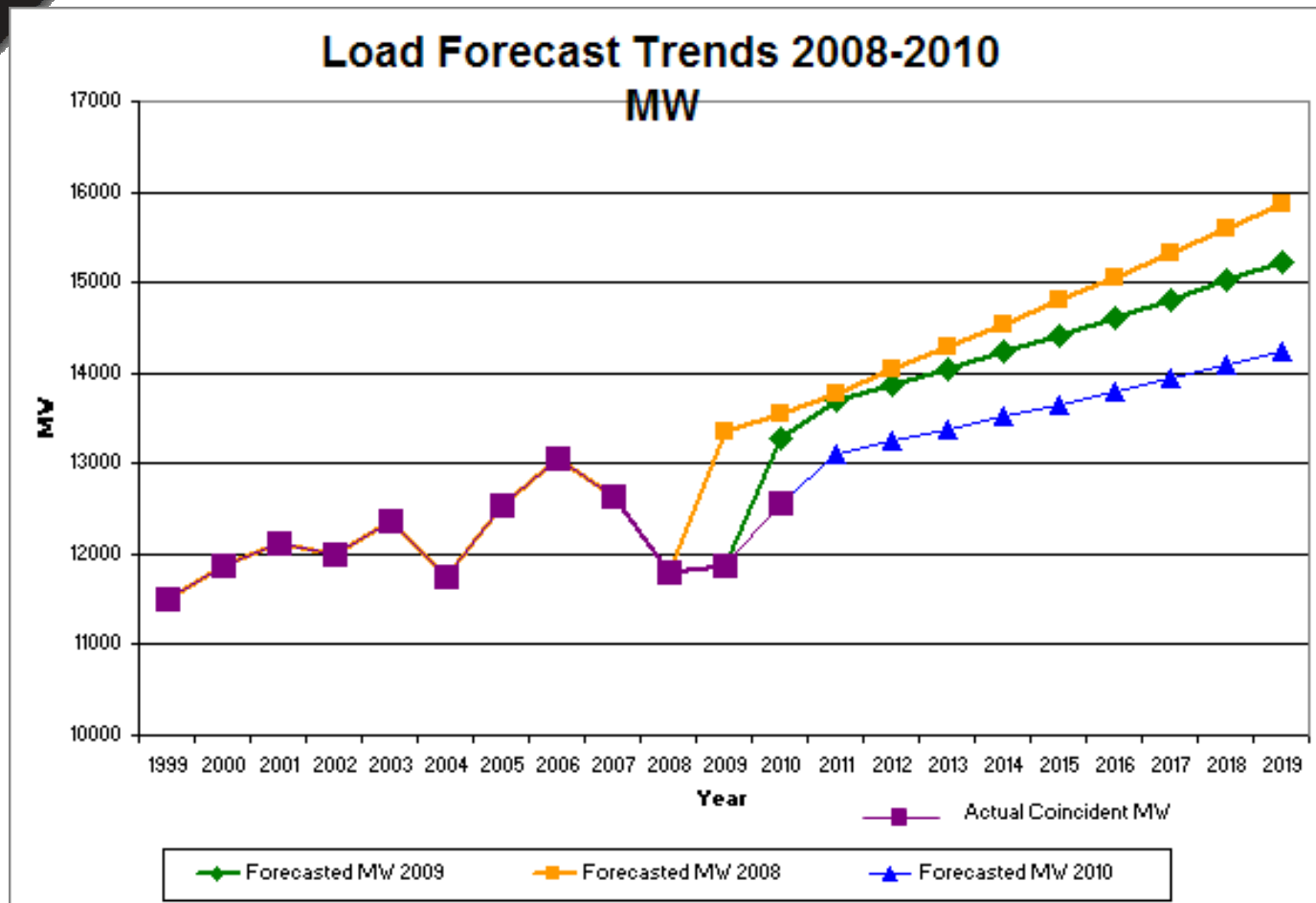
## Key Messages

- Load forecast decreasing relative to 2010 Assessment
- Minor generation assumption changes
- Needs are likely to be delayed
- Participating in Regional Studies

# Assessment Process



# Load Forecast Trends





# Generation Dispatch Changes

- Ownership changes (96 MW, no net diff)
- Wind (-13 MW)
- Retirements (-198 MW)
- Other Increases (7 MW)
- Other Reductions (-163 MW)
- Retirements Environmentally driven not included

# Need Drivers

Need Drivers	Zone				
	1	2	3	4	5
G-T	X	X	X	X	
TSR	X				
Condition	X	X	X	X	X
D-T	X	X	X	X	X
Economic Benefits	X	X	X	X	X
Load Growth	X	X	X	X	X
Dispatch/Biases	X	X	X	X	X
Regional		X	X	X	X



# Network Changes - Deferrals

- Near Term (2 year budget impacts)
  - 2 projects ISD deferred from 2011 to 2012
  - 3 projects could be deferred
    - Petenwell bus (2013 to 2015)
    - Sun Valley Tap-Oregon rebuild (2014 to 2020)
    - Bluemound capacitor banks (2014 to 2015)





# Network Changes - Deferrals

- Beyond 2 years
  - 13 projects could be deferred
    - 5 line projects
    - 3 transformers
    - 5 capacitor banks
  - 2 projects could be canceled
    - Gwinn-Forsyth line (2016)
    - Mukwonago caps (2022)



## Network Changes - New

- Thirteen potential new projects, so far
  - 6 projects related to Point Beach upgrades
  - 3 economics projects
  - 3 equipment upgrades/line uprates
  - 1 line rebuild
  - 1 T-D line project
- Three potential ISD advancements
  - Uprate Straits-McGulpin (was 2014, now 2012)
  - Uprate Royster-Sycamore (was 2019, now 2018)
  - Boscobel capacitor banks (was 2019, now 2015)



# Stakeholder Communication

- February – April 2010
  - Requested load forecast from LDCs
- May 2010
  - Process and assumptions meeting
  - Suggested new sensitivity studies
- September 2010
  - Sent final load forecast back to LDCs
- 1<sup>st</sup> Quarter 2011
  - Stakeholder preliminary needs meeting
- 2<sup>nd</sup> Quarter 2011
  - Stakeholder preliminary solutions meeting



## Next Steps

- February – Needs to Stakeholders
- March 14 - Sensitivity analyses complete
- March – Discuss Needs w/ Stakeholders
- Spring – Discuss solutions w/ Stakeholders
- May 10 – Cost estimates developed
- May 30 – Study write-ups drafted
- June 24 – Multiple outage study complete
- July 29 – Review/approval complete
- Autumn – Publication complete



**Questions?**