

**TRANSMISSION LINE
REQUIRING NEW RIGHT-OF-WAY**
Construct Pleasant Prairie-
Zion Energy Center 345kV Line



Transmission Facilities

- Transmission Sites
 - ▲ Substation/Switching Yard
- Transmission Lines

138 kV	345 kV
Single Circuit	Single Circuit
Double Circuit	Double Circuit

Approved Route

AUGUST 2012

- Park Areas
- City/Village
- Open Water

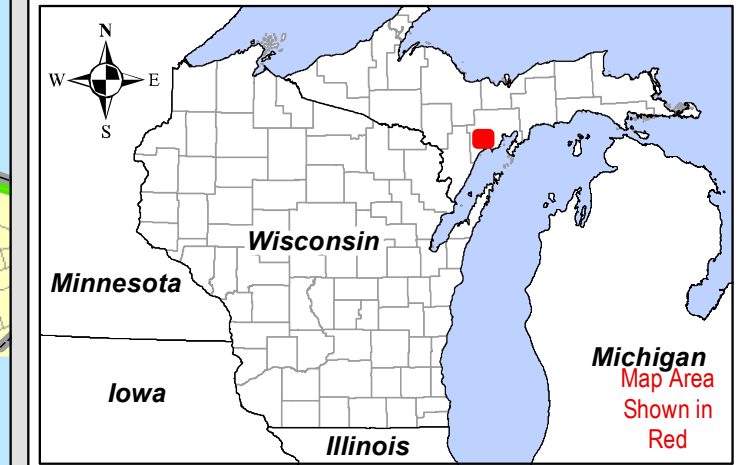
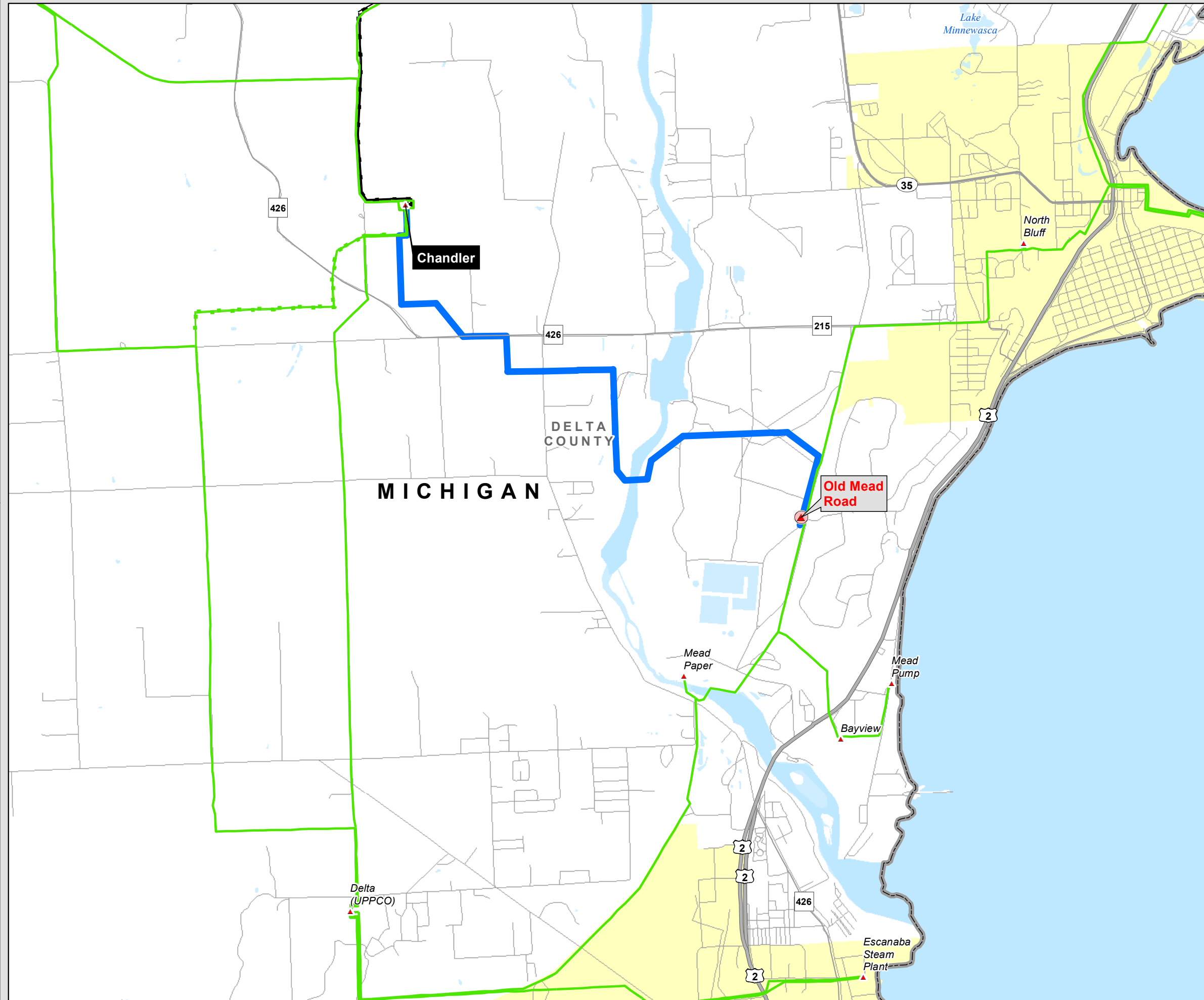
Base Map Data Sources: ATC, WDNR, MDNR, PSCW, WDOA, ESRI.

2,000 1,000 0 2,000
Feet

The information presented in this map document is advisory and is intended for reference purposes only. American Transmission Company owned and operated facility locations are approximate.



**TRANSMISSION LINE
REQUIRING NEW RIGHT-OF-WAY**
Construct Old Mead Road to Chandler
Double Circuit 138kV Lines



Transmission Facilities

Transmission Sites

- ▲ Substation/Switching Yard

Transmission Lines

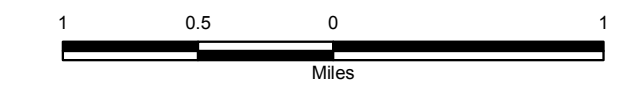
69 kV	138 kV	345 kV
Single Circuit	Single Circuit	Single Circuit
Double Circuit	Double Circuit	Double Circuit

- ▲ Proposed Substation
- ▬ Proposed Route

AUGUST 2012

- Park Areas
- City/Village
- Open Water

Base Map Data Sources: ATC, WDNR, MDNR, PSCW, ESRI.



The information presented in this map document is advisory and is intended for reference purposes only. American Transmission Company owned and operated facility locations are approximate.



**TRANSMISSION LINE
REQUIRING NEW RIGHT-OF-WAY**
Construct Double Circuit 138 kV Line to
Serve Milwaukee County T-D Interconnection



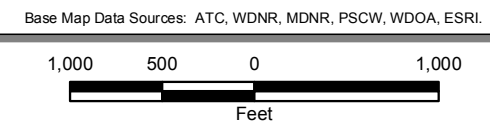
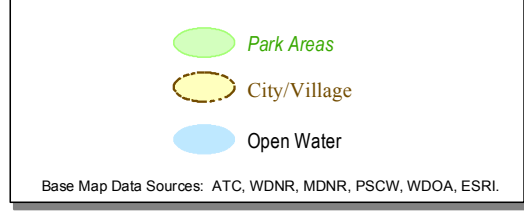
Transmission Facilities

- Transmission Sites
 - ▲ Substation/Switching Yard
- Transmission Lines
 - 138 kV
 - Single Circuit
 - Double Circuit

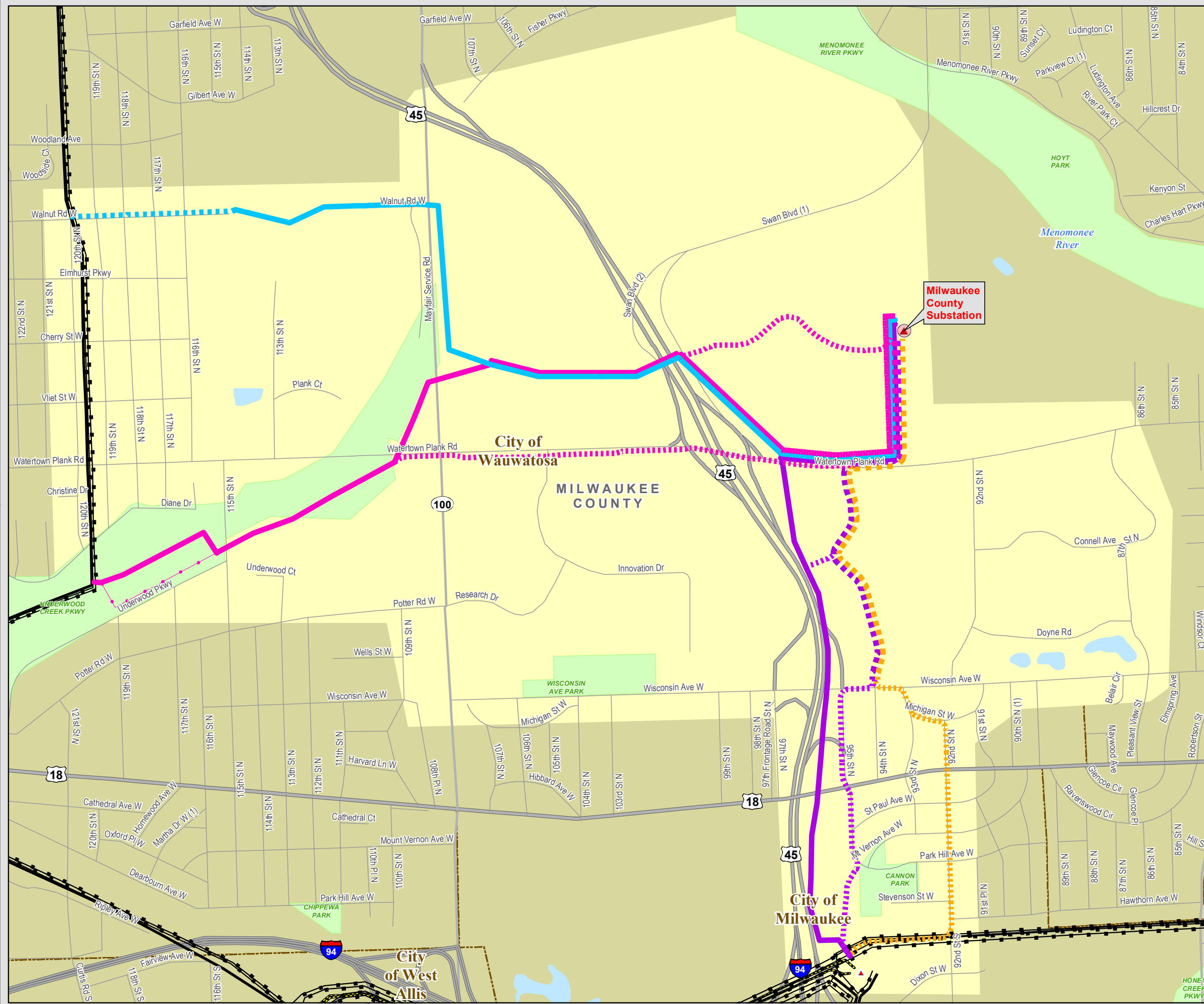
- Route A (Overhead)
- Route A (Underground)
- Route B (Overhead)
- Route B Alternative (Overhead)
- Route B (Underground)
- Route C HWY 45 (Overhead)
- Route C 95th St. (Underground)
- Route D (Underground)

Study Area

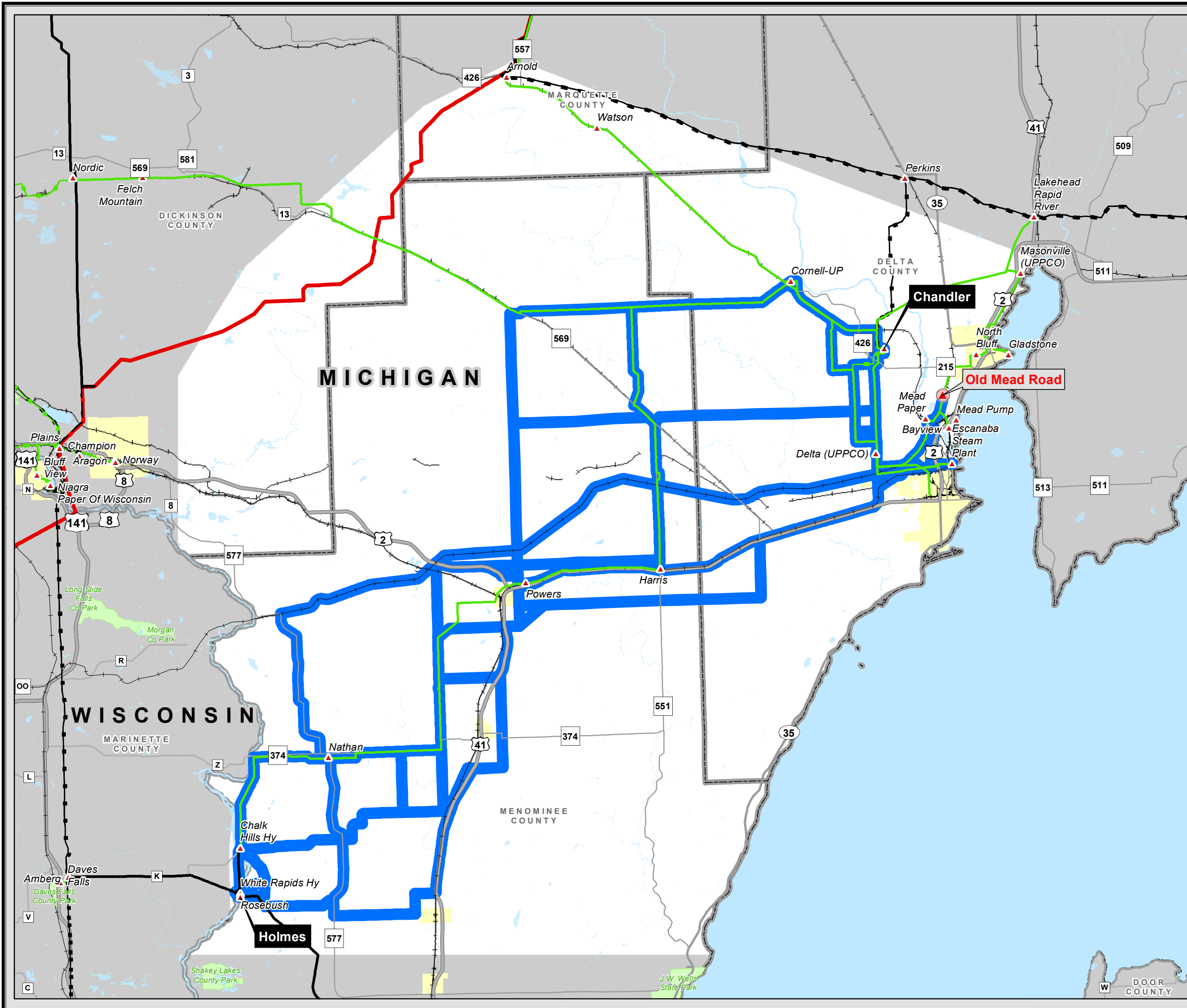
AUGUST 2012



The information presented in this map document is advisory and is intended for reference purposes only. American Transmission Company owned and operated facility locations are approximate.



**TRANSMISSION LINE
REQUIRING NEW RIGHT-OF-WAY**
Bay Lake: Holmes to Escanaba
138kV Two Circuit Project



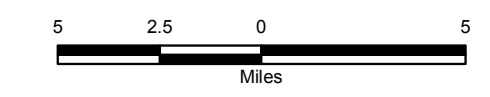
- Transmission Facilities**
- Transmission Sites
 - ▲ Substation/Switching Yard
- Transmission Lines**
- | | | |
|----------------------|-----------------------|-----------------------|
| 69 kV Single Circuit | 138 kV Single Circuit | 345 kV Single Circuit |
| 69 kV Double Circuit | 138 kV Double Circuit | 345 kV Double Circuit |

- Proposed Substation
- Potential Corridors
- Project Area

AUGUST 2012

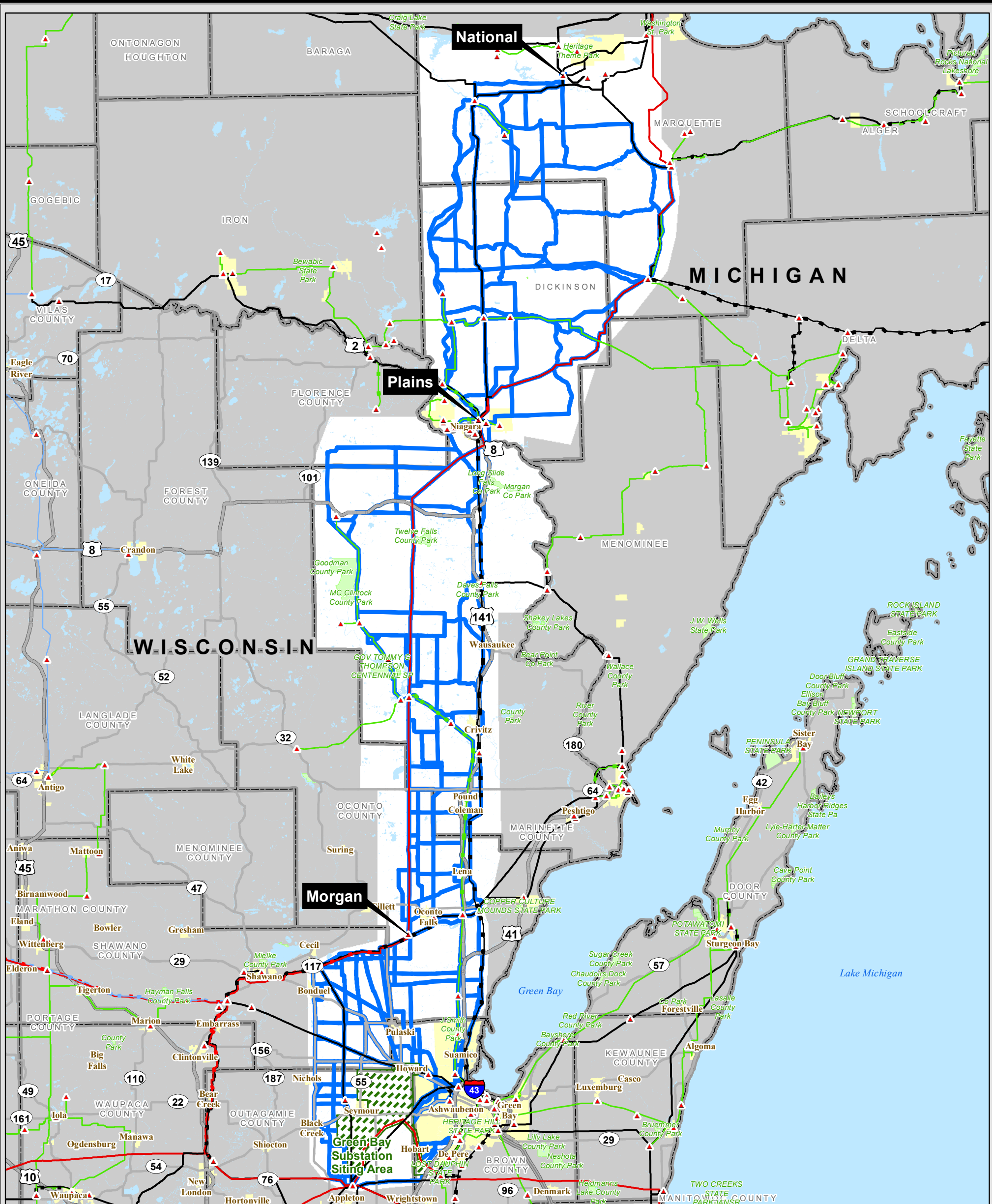
- Park Areas
- City/Village
- Open Water

Base Map Data Sources: ATC, WDNR, MDNR, PSCW, ESRI.



The information presented in this map document is advisory and is intended for reference purposes only. American Transmission Company owned and operated facility locations are approximate.





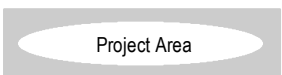
Transmission Facilities

- Transmission Sites
- ▲ Substation/Switching Yard

Transmission Lines

- 69 kV Single Circuit
- 69 kV Double Circuit
- 115 kV Single Circuit
- 138 kV Single Circuit
- 138 kV Double Circuit
- 345 kV Single Circuit
- 345 kV Double Circuit

- Green Bay Substation Siting Area
- Potential Corridors



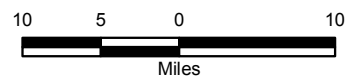
AUGUST 2012

**TRANSMISSION LINE
REQUIRING NEW RIGHT-OF-WAY
Bay Lake:
Green Bay-Morgan-Plains-National
345kV Line**



- Park Areas
- City/Village
- Open Water

Base Map Data Sources: ATC, WDNR, MDNR, PSCW, ESRI.

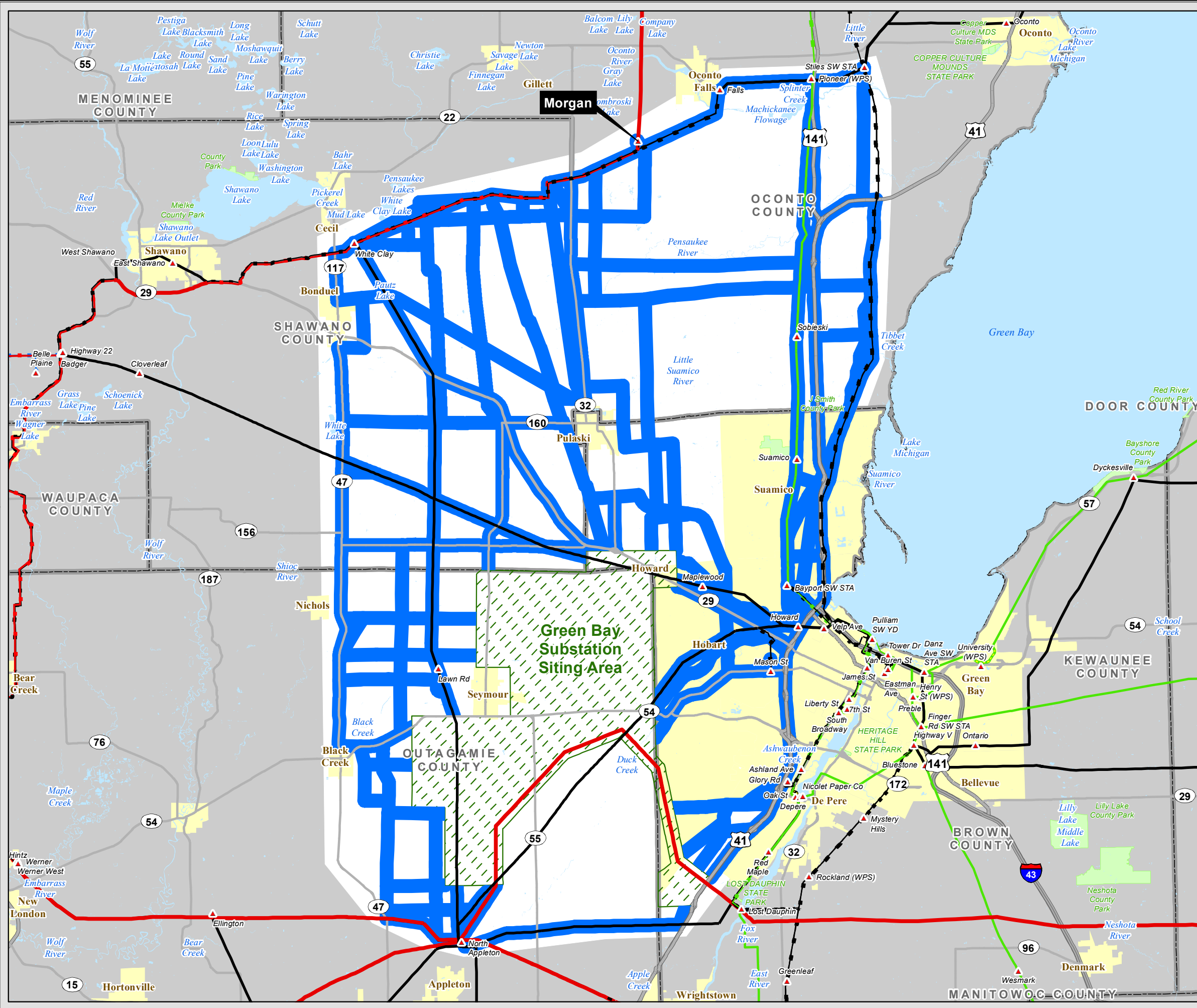


The information presented in this map document is advisory and is intended for reference purposes only. American Transmission Company owned and operated facility locations are approximate.



TRANSMISSION LINE REQUIRING NEW RIGHT-OF-WAY

Bay Lake: Green Bay to Morgan 138kV Line



Transmission Facilities

Transmission Sites

- ▲ Substation/Switching Yard

Transmission Lines

69 kV Single Circuit	138 kV Single Circuit	345 kV Single Circuit
69 kV Double Circuit	138 kV Double Circuit	345 kV Double Circuit

Green Bay Substation Siting Area

Potential Corridors

Project Area

AUGUST 2012

Park Areas

City/Village

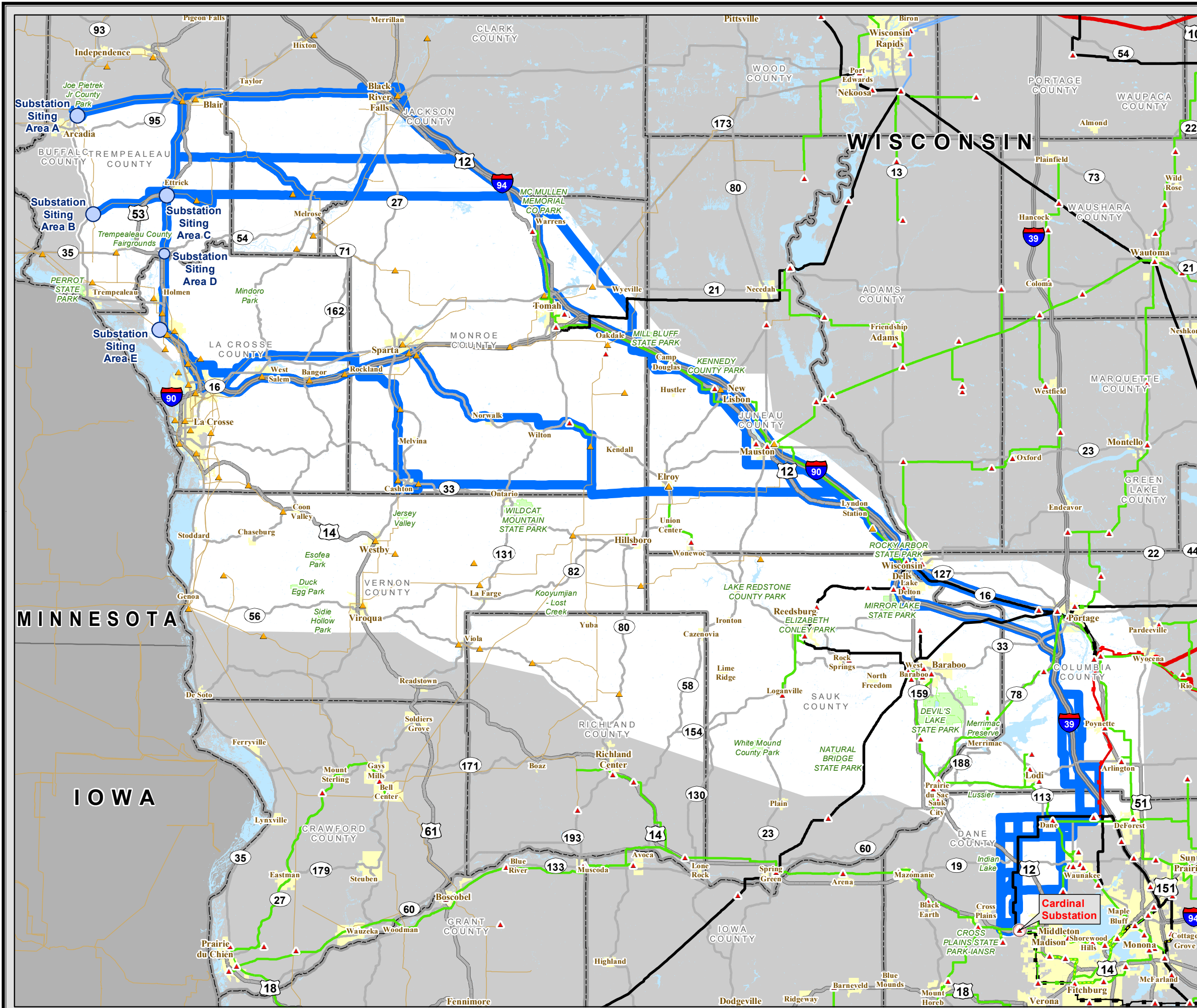
Open Water

Base Map Data Sources: ATC, WDNR, MDNR, PSCW, ESRI.

5 2.5 0 5
Miles

The information presented in this map document is advisory and is intended for reference purposes only. American Transmission Company owned and operated facility locations are approximate.





**TRANSMISSION LINE
REQUIRING NEW RIGHT-OF-WAY**
Construct Badger Coulee 345kV Line



Transmission Facilities

- Transmission Sites
 - ▲ Substation/Switching Yard
 - ▲ Non-ATC Substation
- Transmission Lines
 - 69 kV: Single Circuit (green), Double Circuit (light green)
 - 115 kV: Single Circuit (blue)
 - 138 kV: Single Circuit (black), Double Circuit (grey)
 - 345 kV: Single Circuit (red), Double Circuit (dark red)
 - Non-ATC Transmission Line (orange)

- Potential Substation Siting Area (blue circle)
- Preliminary Routes (blue line)
- Study Area (grey oval)

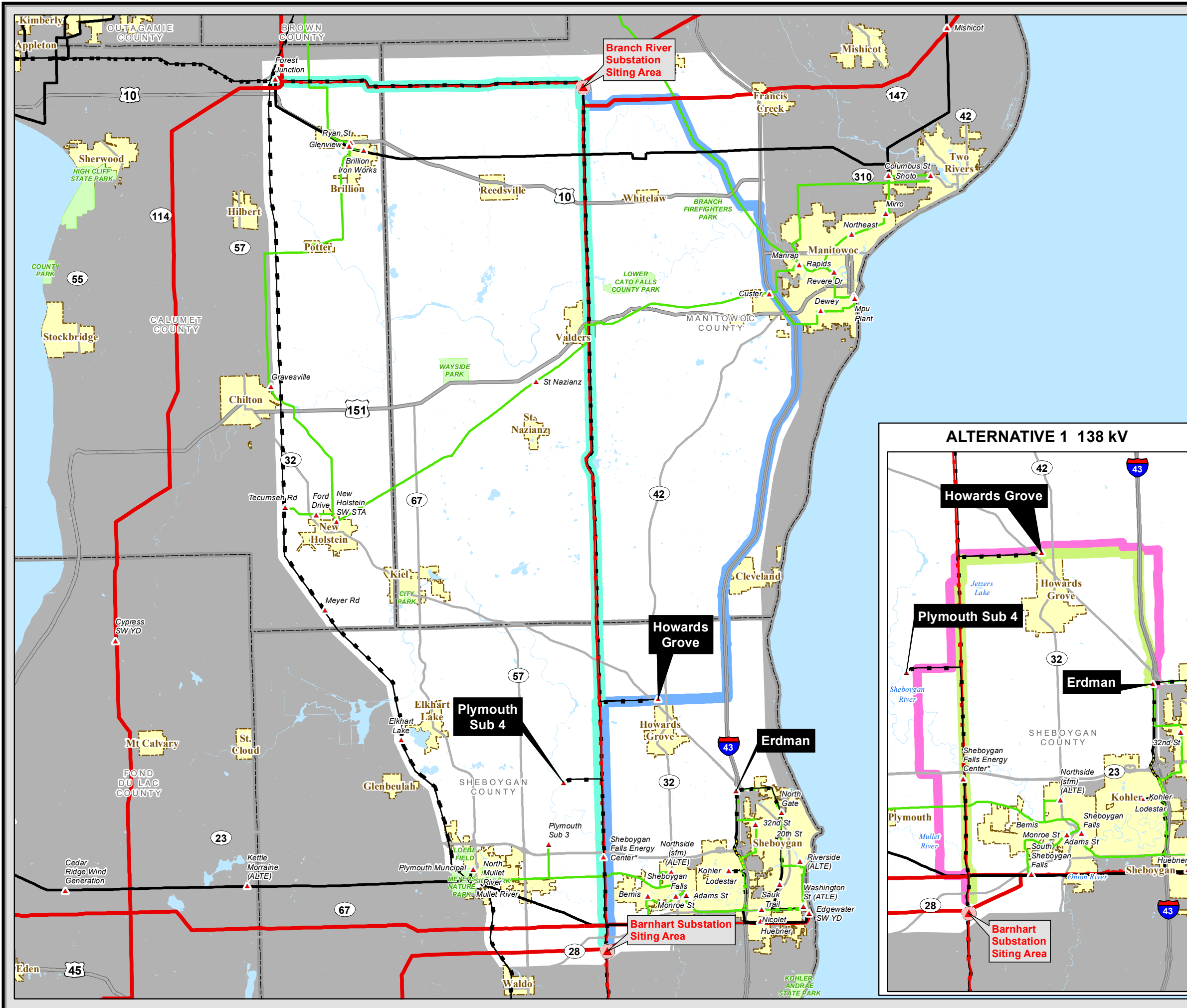
AUGUST 2012

- Park Areas (green oval)
- City/Village (yellow oval)
- Open Water (blue oval)

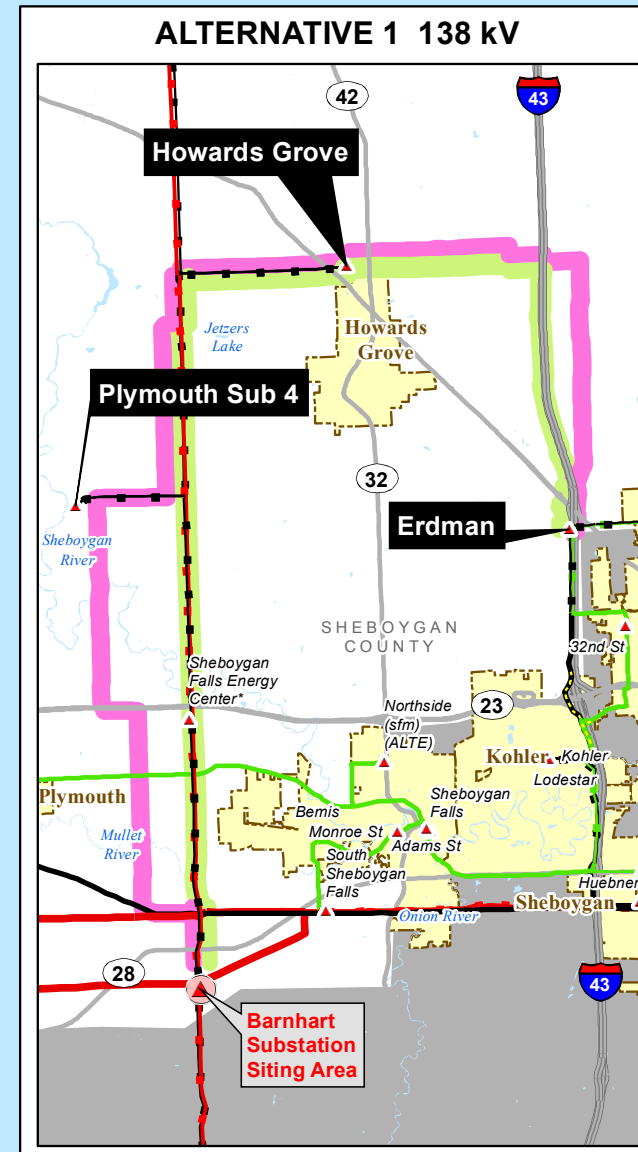
Base Map Data Sources: ATC, WDNR, MDNR, PSCW, WDOA, ESRI.

The information presented in this map document is advisory and is intended for reference purposes only. American Transmission Company owned and operated facility locations are approximate.



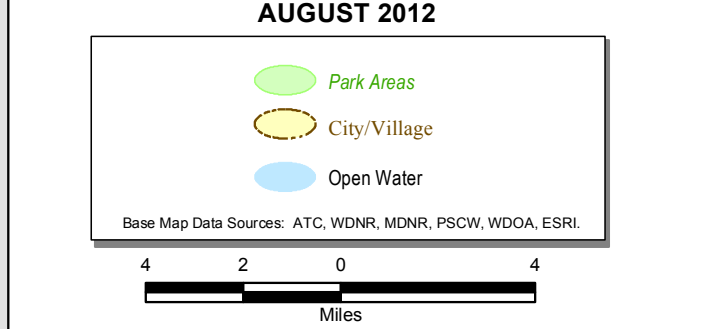


**TRANSMISSION LINE
REQUIRING NEW RIGHT-OF-WAY**
Construct Erdman-Howards Grove-
Plymouth #4-Barnhart 138kV Line



- Transmission Facilities**
- Transmission Sites
 - ▲ Substation/Switching Yard
- Transmission Lines**
- 69 kV: Single Circuit (thin green), Double Circuit (thick green)
 - 138 kV: Single Circuit (thin black), Double Circuit (thick black)
 - 345 kV: Single Circuit (thin red), Double Circuit (thick red)

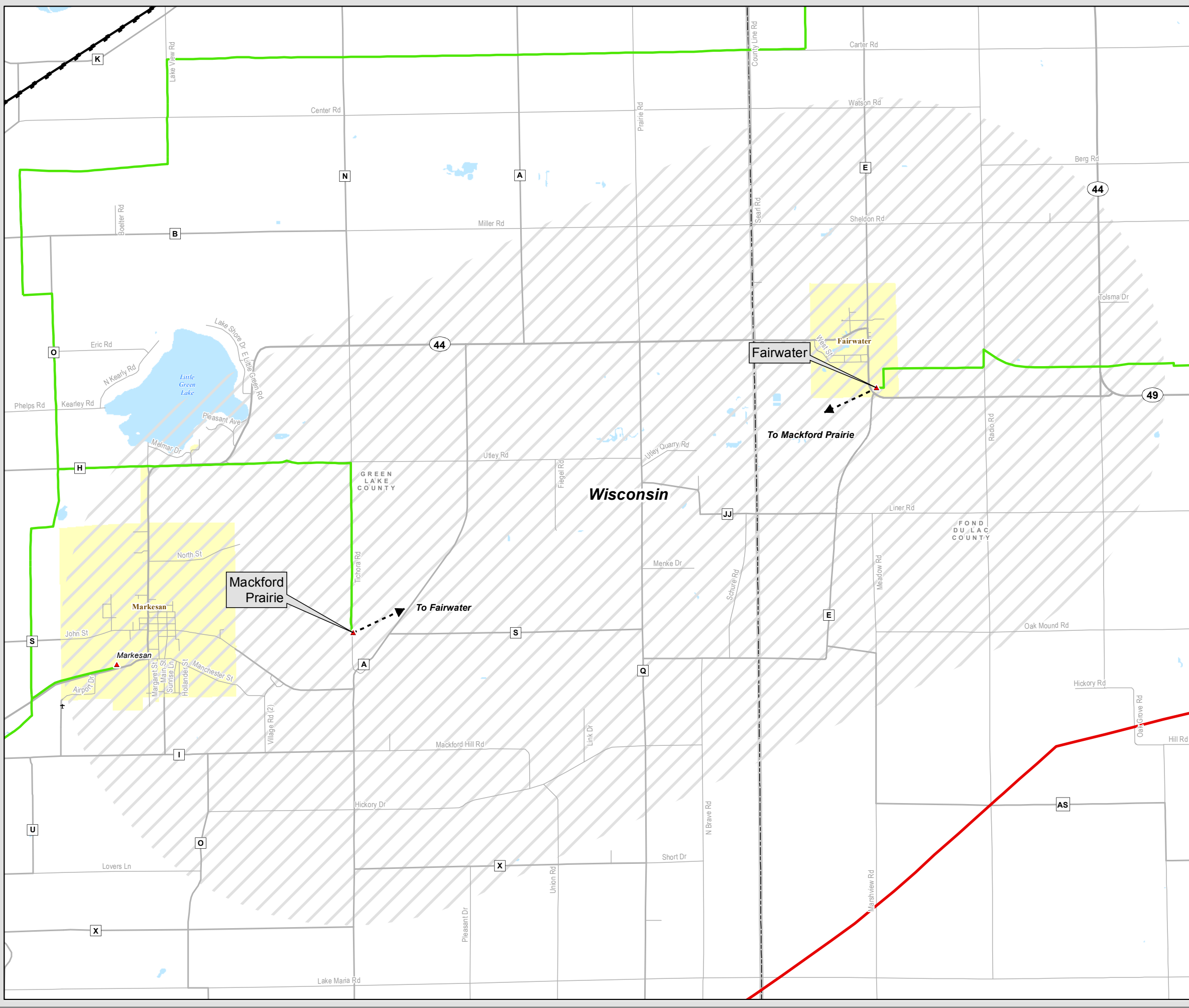
- Proposed Substation
- ROUTE ALTERNATIVES**
- Alternative 1 345 kV (light green)
 - Alternative 1A 138 kV (medium green)
 - Alternative 1B 138 kV (pink)
 - Alternative 2 345 kV (blue)
- Study Area



The information presented in this map document is advisory and is intended for reference purposes only. American Transmission Company owned and operated facility locations are approximate.



**TRANSMISSION LINE
REQUIRING NEW RIGHT-OF-WAY**
Construct Fairwater-Mackford Prairie 69 kV Line



- Transmission Facilities**
- Transmission Sites
 - ▲ Substation/Switching Yard
- Transmission Lines**
- | | | |
|----------------------|-----------------------|-----------------------|
| 69 kV Single Circuit | 138 kV Single Circuit | 345 kV Single Circuit |
| 69 kV Double Circuit | 138 kV Double Circuit | 345 kV Double Circuit |

Preliminary Screening Area

City/Village

Open Water

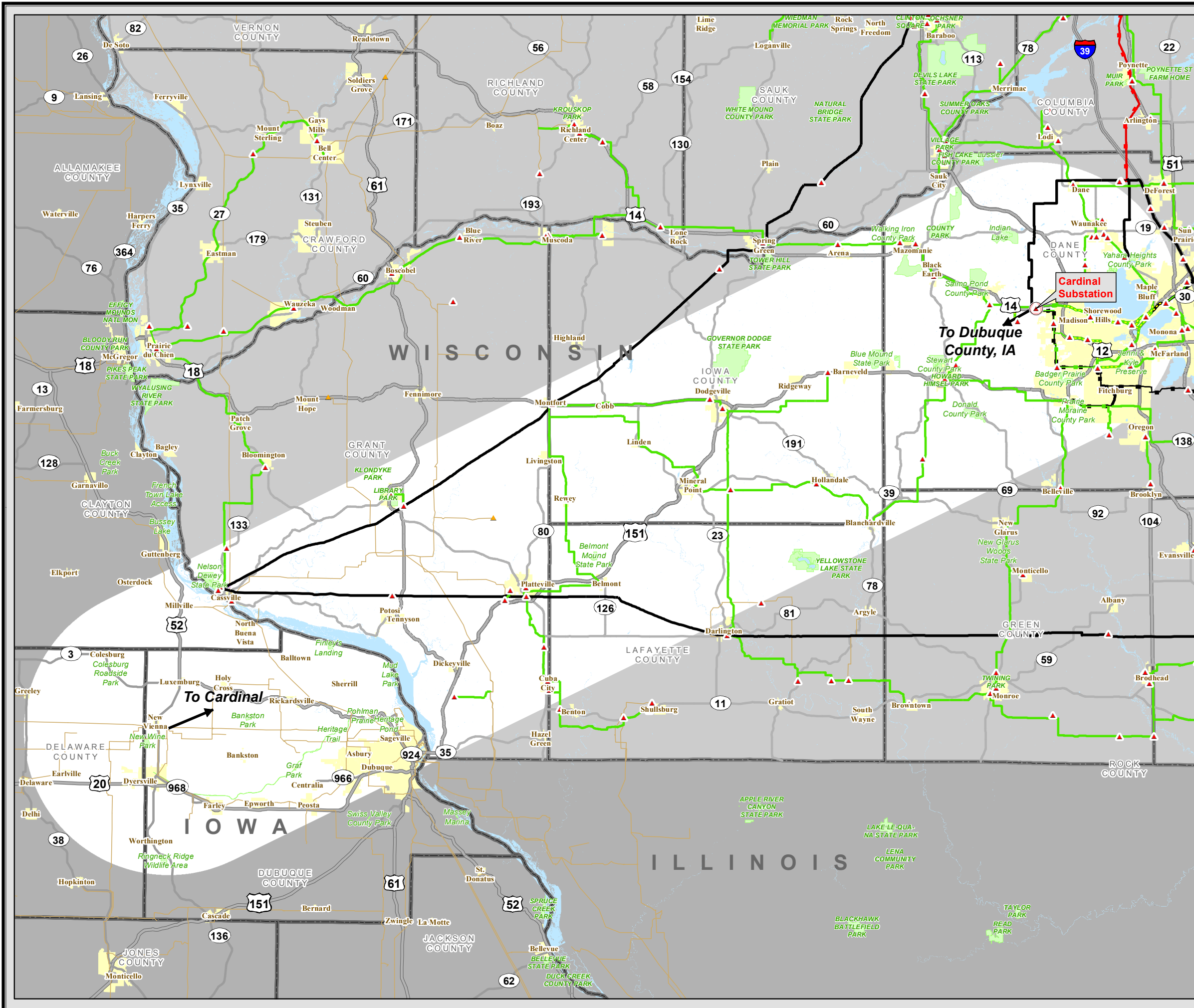
Base Map Data Sources: ATC, WDNR, MDNR, PSCW, WDOA, ESRI.

1 0.5 0 1
Miles

The information presented in this map document is advisory and is intended for reference purposes only. American Transmission Company owned and operated facility locations are approximate.



**TRANSMISSION LINE
REQUIRING NEW RIGHT-OF-WAY**
Construct Cardinal Bluffs 345kV Line



Transmission Facilities

Transmission Sites

- ▲ Substation/Switching Yard
- ▲ Non-ATC Substation

Transmission Lines

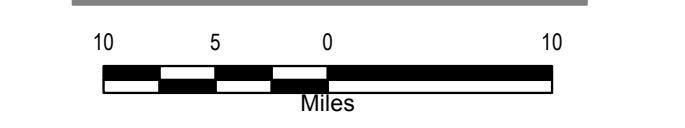
- 69 kV Single Circuit (Green line)
- 69 kV Double Circuit (Green line with double bars)
- 138 kV Single Circuit (Black line)
- 138 kV Double Circuit (Black line with double bars)
- 345 kV Single Circuit (Red line)
- 345 kV Double Circuit (Red line with double bars)
- Non-ATC Transmission Line (Orange line)

- ▲ Proposed Substation
- Preliminary Screening Area (Grey shaded area)

AUGUST 2012

- Park Areas (Green shaded area)
- City/Village (Yellow shaded area)
- Open Water (Blue shaded area)

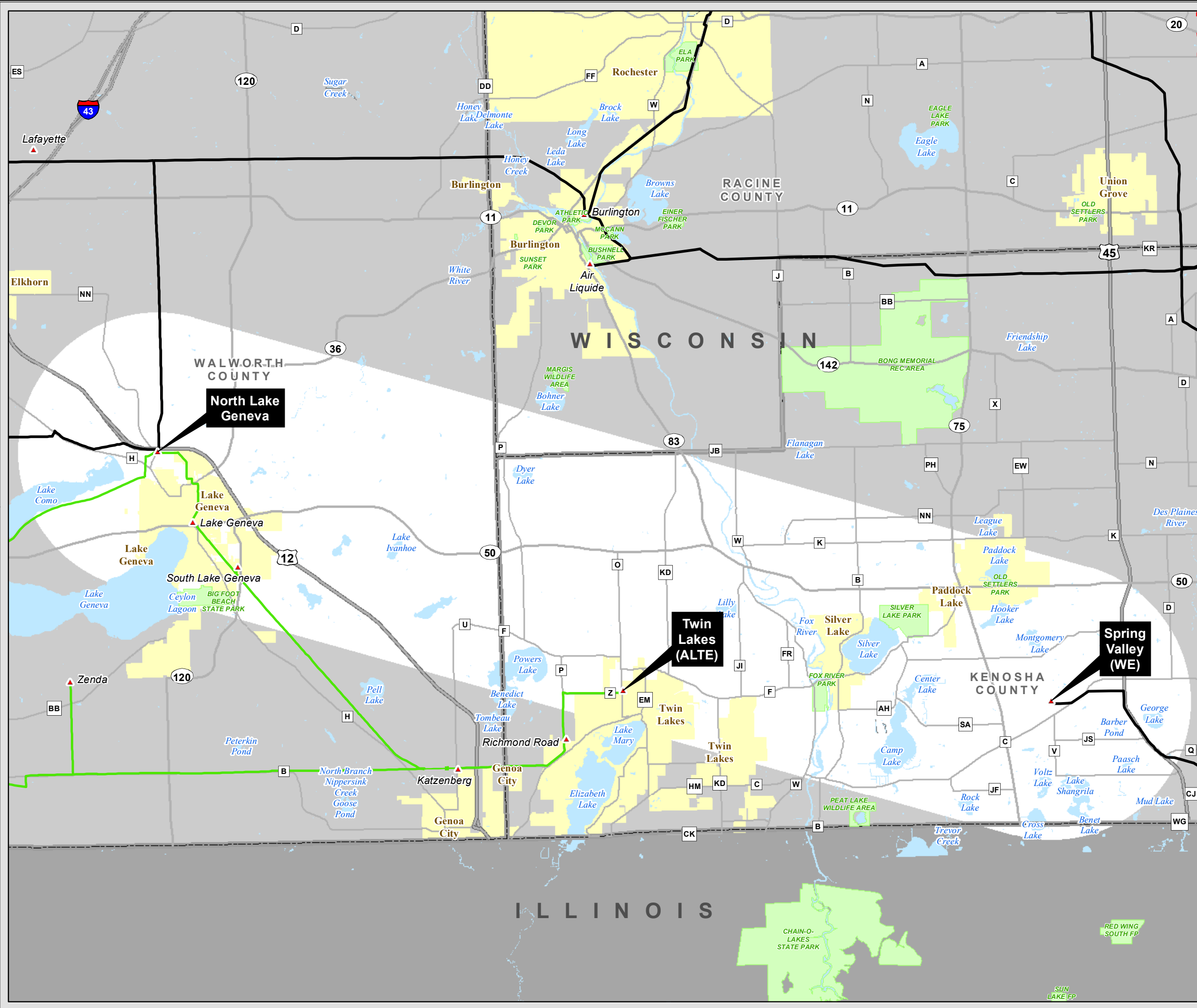
Base Map Data Sources: ATC, WDNR, MDNR, PSCW, WDOA, ESRI.



The information presented in this map document is advisory and is intended for reference purposes only. American Transmission Company owned and operated facility locations are approximate.



**TRANSMISSION LINE
REQUIRING NEW RIGHT-OF-WAY**
Construct Spring Valley-North Lake Geneva 138kV Line
Construct Twin Lakes 69kV Line



Transmission Facilities

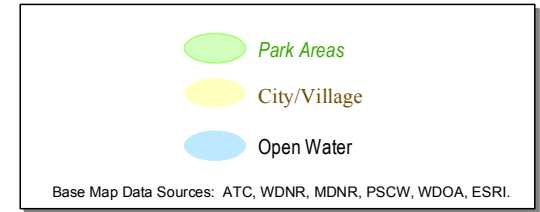
Transmission Sites
▲ Substation/Switching Yard

Transmission Lines

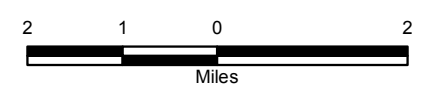
69 kV Single Circuit	138 kV Single Circuit	345 kV Single Circuit
69 kV Double Circuit	138 kV Double Circuit	345 kV Double Circuit

Preliminary Screening Area

AUGUST 2012



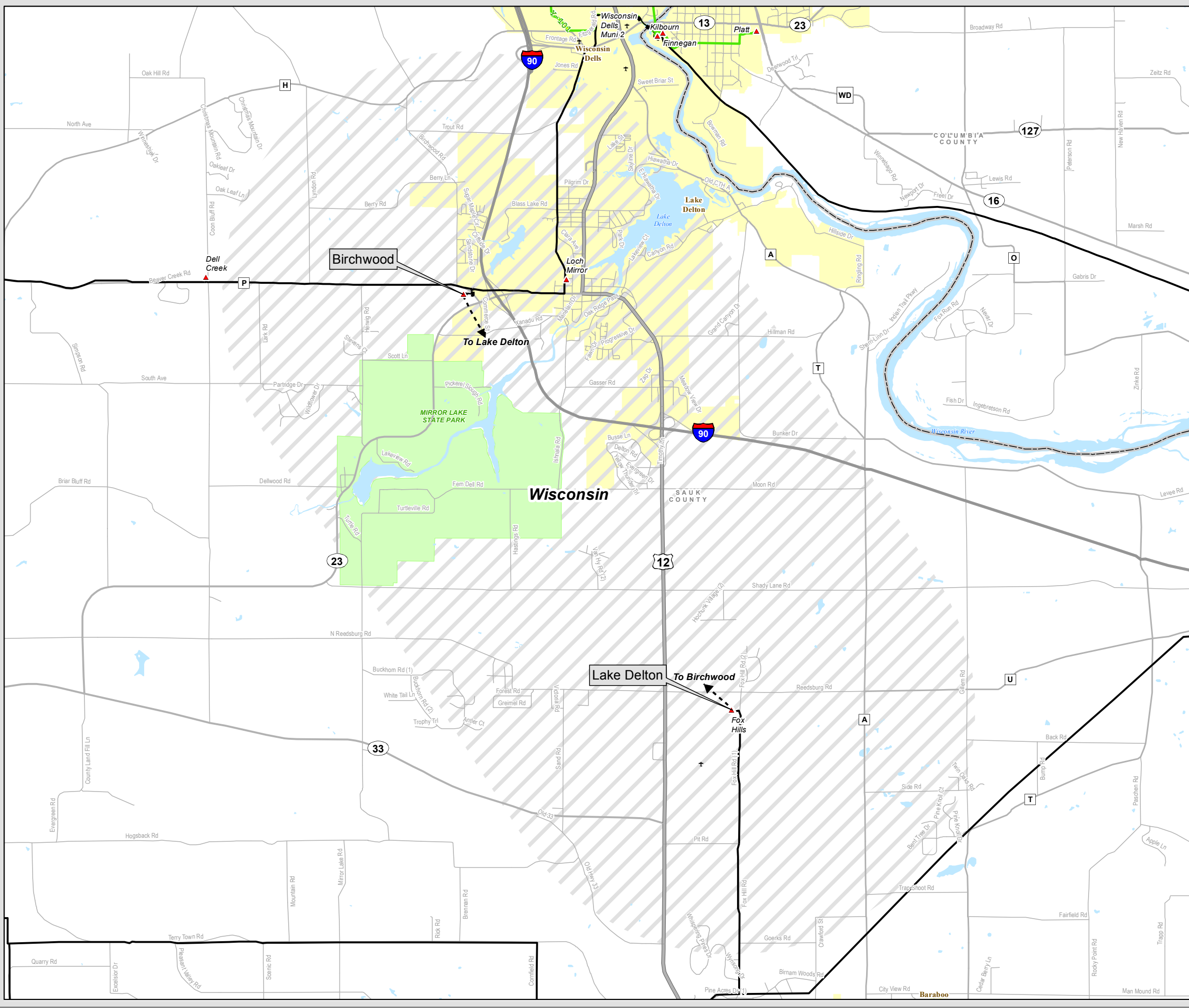
Base Map Data Sources: ATC, WDNR, MDNR, PSCW, WDOA, ESRI.



The information presented in this map document is advisory and is intended for reference purposes only. American Transmission Company owned and operated facility locations are approximate.



**TRANSMISSION LINE
REQUIRING NEW RIGHT-OF-WAY**
Construct Lake Delton-Birchwood 138kV Line



Transmission Facilities

- Transmission Sites
- ▲ Substation/Switching Yard

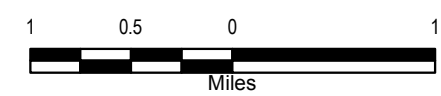
Transmission Lines

- 69 kV Single Circuit
- 69 kV Double Circuit
- 138 kV Single Circuit
- 138 kV Double Circuit

- Preliminary Screening Area

- City/Village
- Park Areas
- Open Water

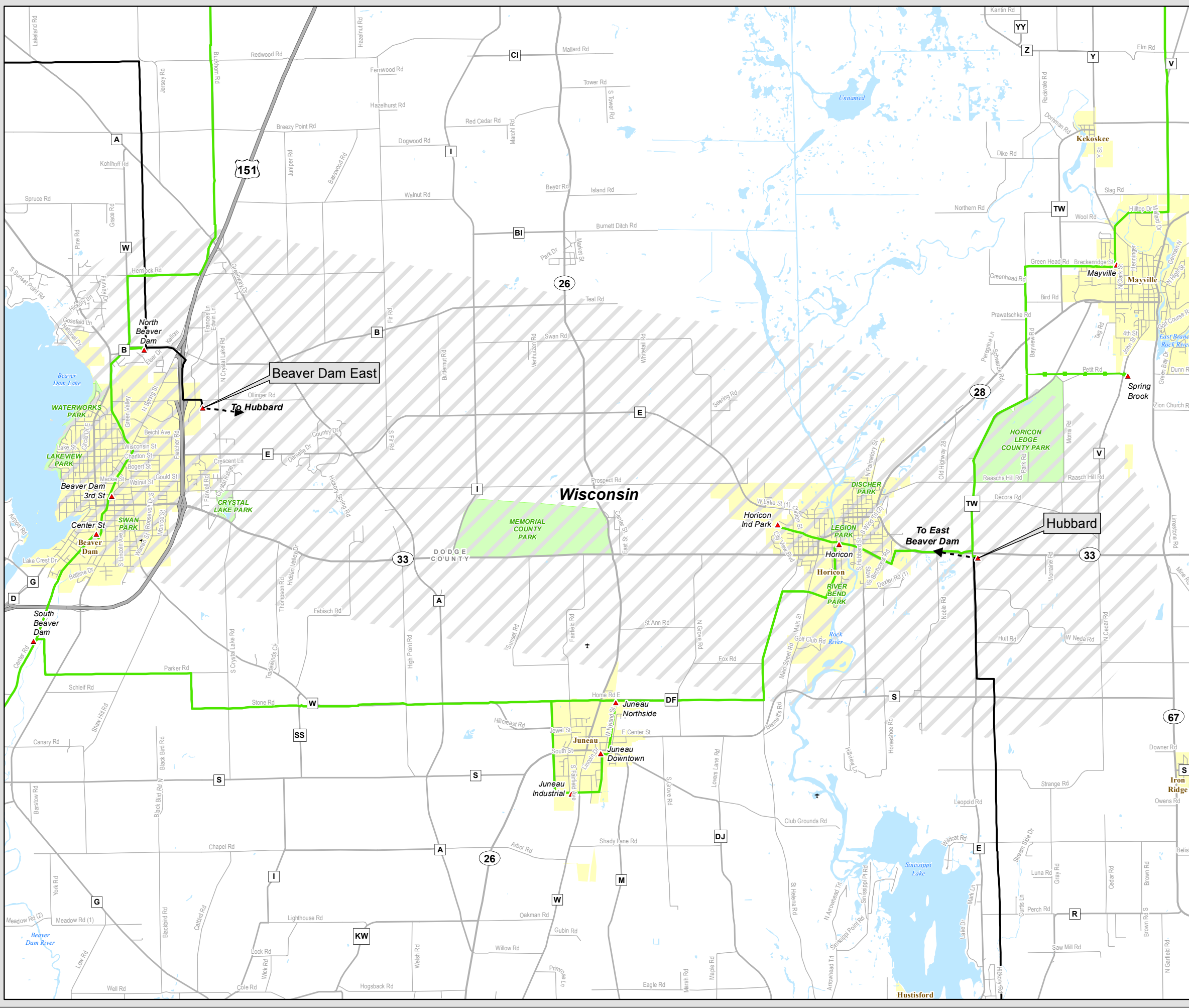
Base Map Data Sources: ATC, WDNR, MDNR, PSCW, WDOA, ESRI.



The information presented in this map document is advisory and is intended for reference purposes only. American Transmission Company owned and operated facility locations are approximate.



**TRANSMISSION LINE
REQUIRING NEW RIGHT-OF-WAY**
Construct Hubbard-East Beaver Dam 138kV Line



- Transmission Facilities**
- Transmission Sites
 - ▲ Substation/Switching Yard

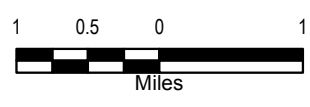
- Transmission Lines**
- 69 kV Single Circuit
 - 138 kV Single Circuit
 - 69 kV Double Circuit
 - 138 kV Double Circuit

○ Preliminary Screening Area

● City/Village ● Park Areas

● Open Water

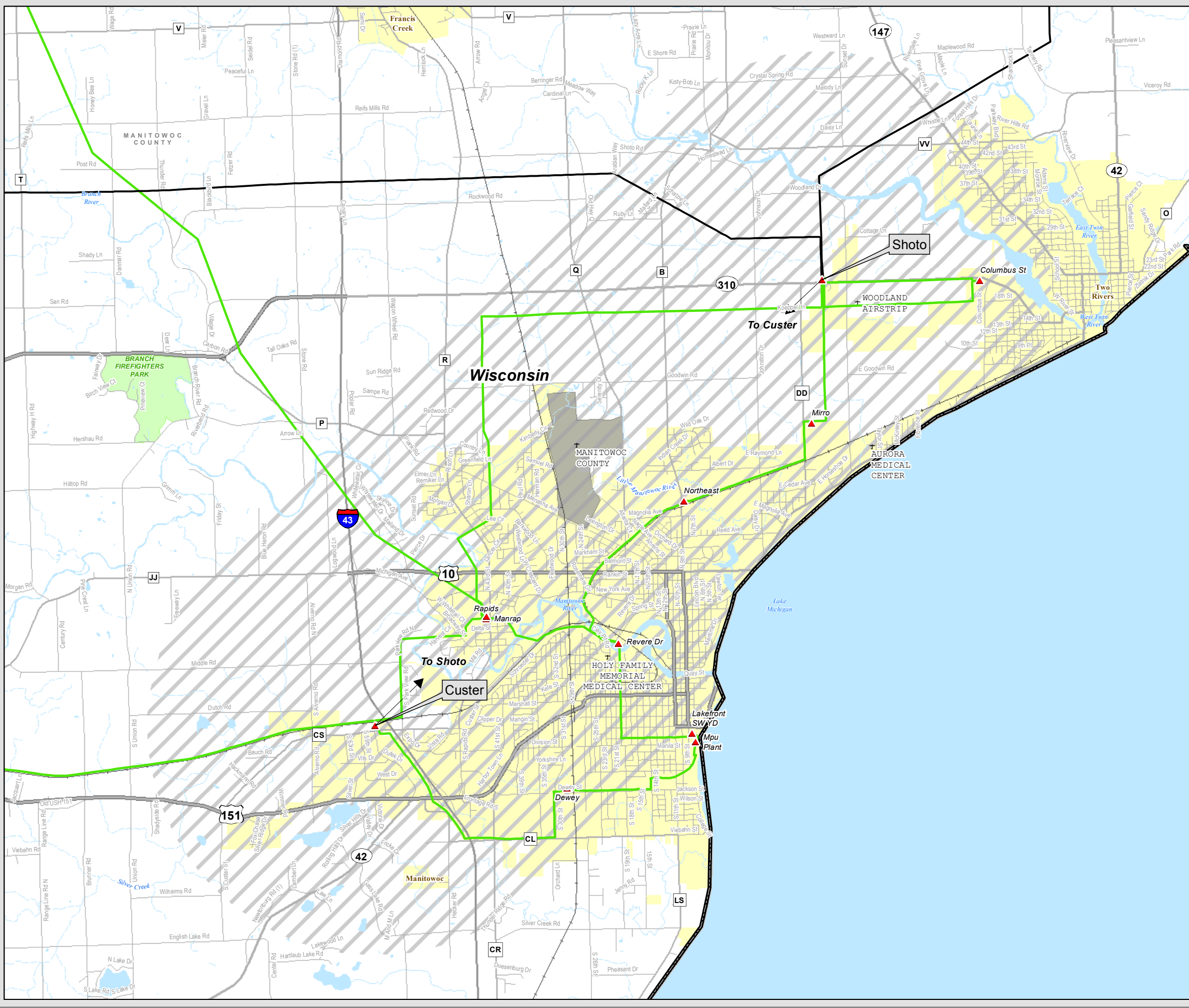
Base Map Data Sources: ATC, WDNR, MDNR, PSCW, WDOA, ESRI.



The information presented in this map document is advisory and is intended for reference purposes only. American Transmission Company owned and operated facility locations are approximate.



**TRANSMISSION LINE
REQUIRING NEW RIGHT-OF-WAY**
Construct Shoto to Custer 138 kV Line



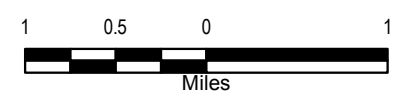
- Transmission Facilities**
- Transmission Sites
 - ▲ Substation/Switching Yard

- Transmission Lines**
- 69 kV Single Circuit (solid green line)
 - 69 kV Double Circuit (dashed green line)
 - 138 kV Single Circuit (solid black line)
 - 138 kV Double Circuit (dashed black line)

- ▲ Proposed Substation
- ▨ Preliminary Screening Area

- City/Village (yellow oval)
- Park Areas (green oval)
- Open Water (blue oval)

Base Map Data Sources: ATC, WDNR, MDNR, PSCW, WDOA, ESRI.



The information presented in this map document is advisory and is intended for reference purposes only. American Transmission Company owned and operated facility locations are approximate.

